

# 2011-12 Deer Management Assessments and Antlerless Allocations

---



This document provides information presented to the Pennsylvania Game Commission Board of Commissioners on April 11, 2011. Much of the information is taken directly from a Powerpoint presentation. Quality of the pictures and slides was reduced to minimize file size.

*For more information on the deer management program and data and methods used to assess progress towards management goals, visit the Game Commission's website, [www.pgc.state.pa.us](http://www.pgc.state.pa.us), click on the "White-tailed deer" button, then click on the "2009-2018 White-tailed Deer Management Plan".*

## Management goals direct deer management recommendations.

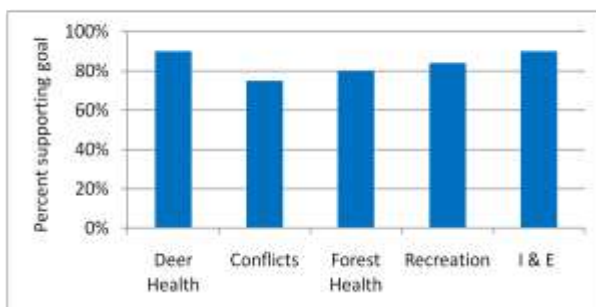
- Healthy deer
- Healthy forest habitat
- Acceptable deer-human conflicts
- Provide recreational opportunities
- Improve information and education

## The Game Commission sought stakeholder input to identify new deer management goals.

- Pennsylvania Federation of Sportsmen Clubs
- Unified Sportsmen of Pennsylvania
- Pennsylvania Deer Association
- United Bowhunters of Pennsylvania
- Quality Deer Management Association
- National Wild Turkey Federation

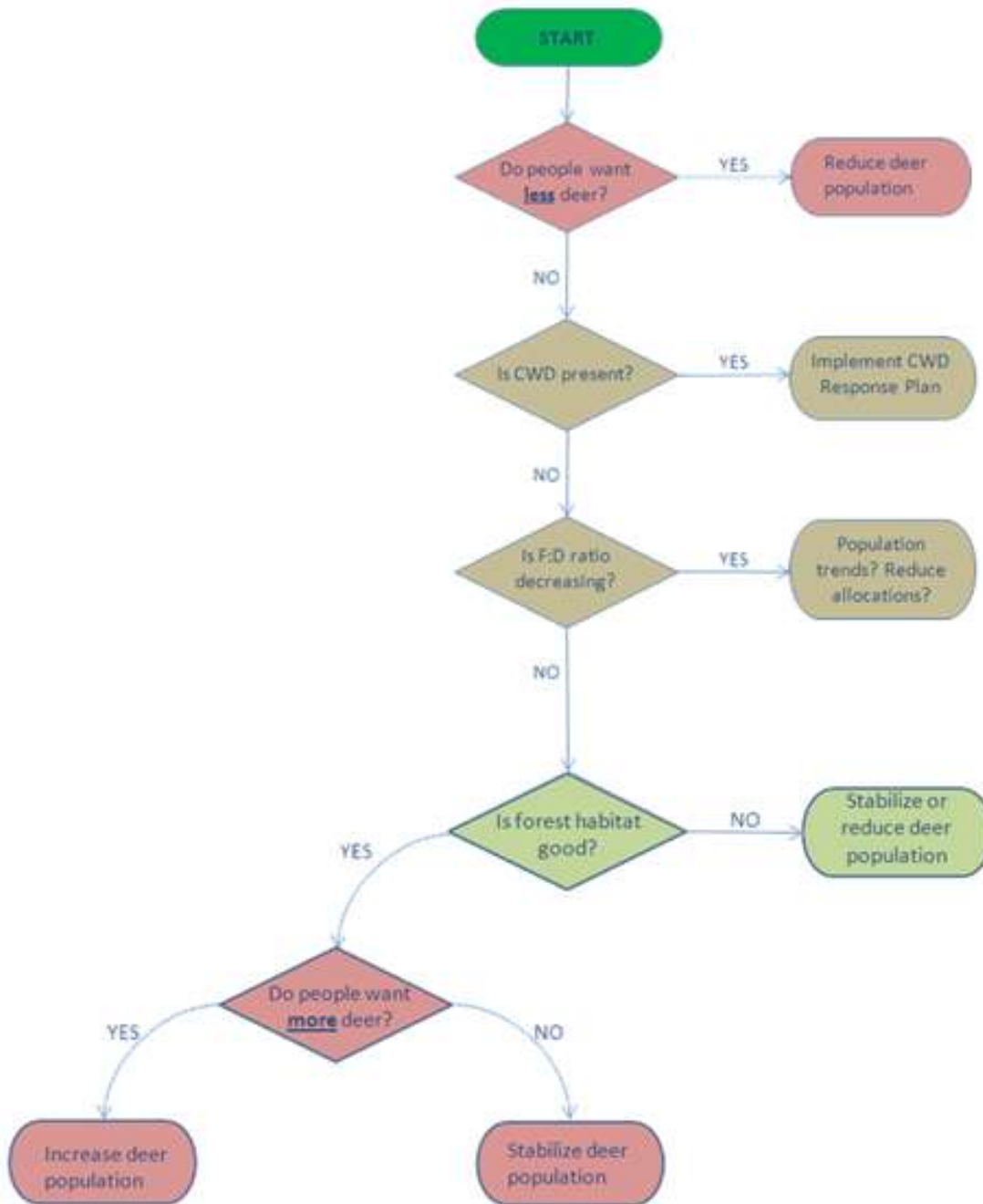
A consensus of stakeholders, including 6 sportsmen organizations, identified deer management goals.

## The Game Commission sought public input to assess new deer management goals.



Majority of public supported goals.

**This is the step-by-step decision process for achieving the goals of the deer program.**



# All WMUs are achieving the deer health goal.

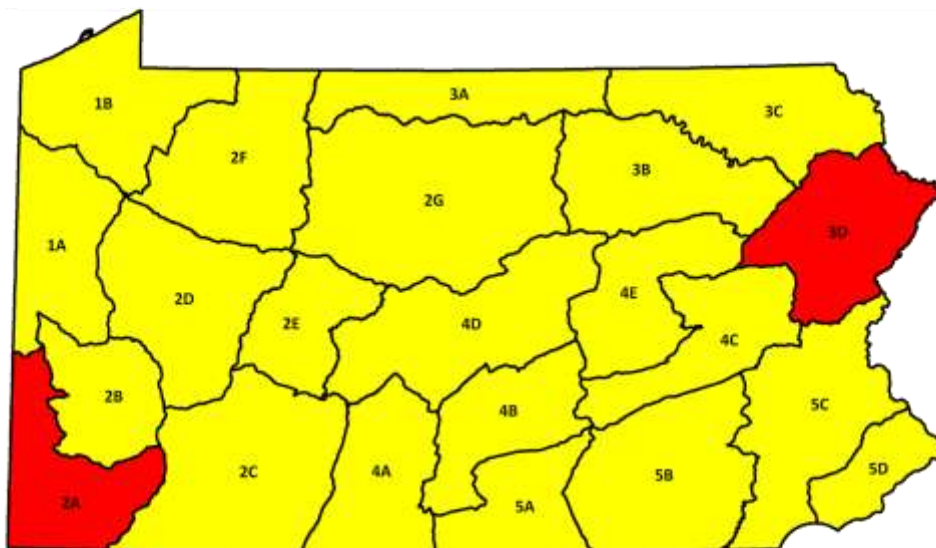






CWD not detected in any WMU, but CWD present in Maryland, Virginia, and West Virginia.



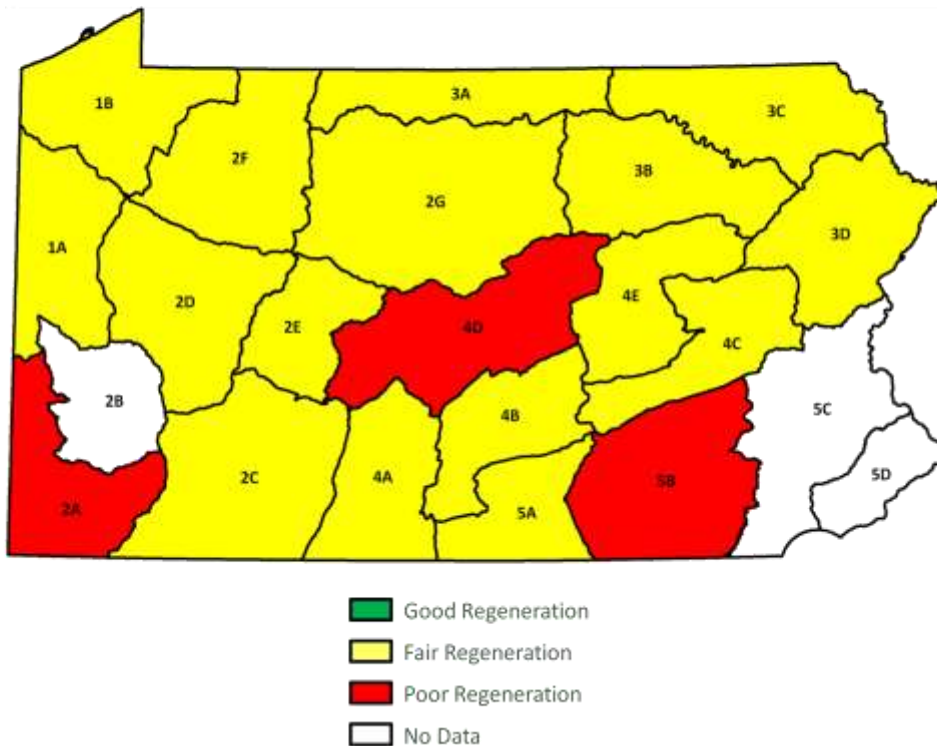
Proportion of fawns in antlerless harvest stable since 2003.

# WMU population trends from 2005 to 2010 were stable in most WMUs.

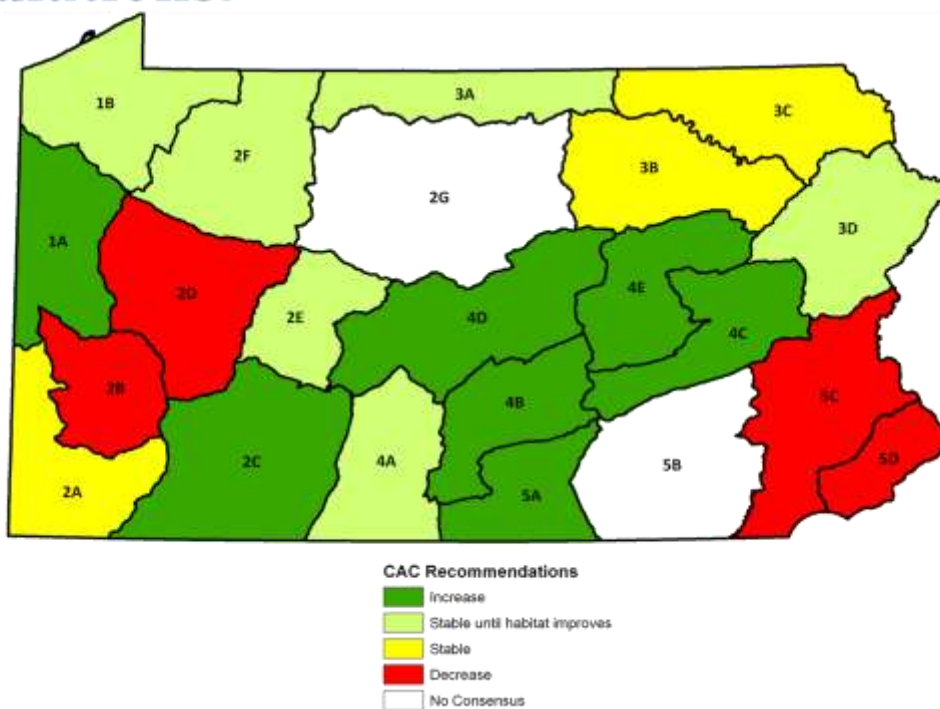


-  Increasing Population Trend
-  Stable Population Trend
-  Decreasing Population Trend
-  No PASAK Population Trend

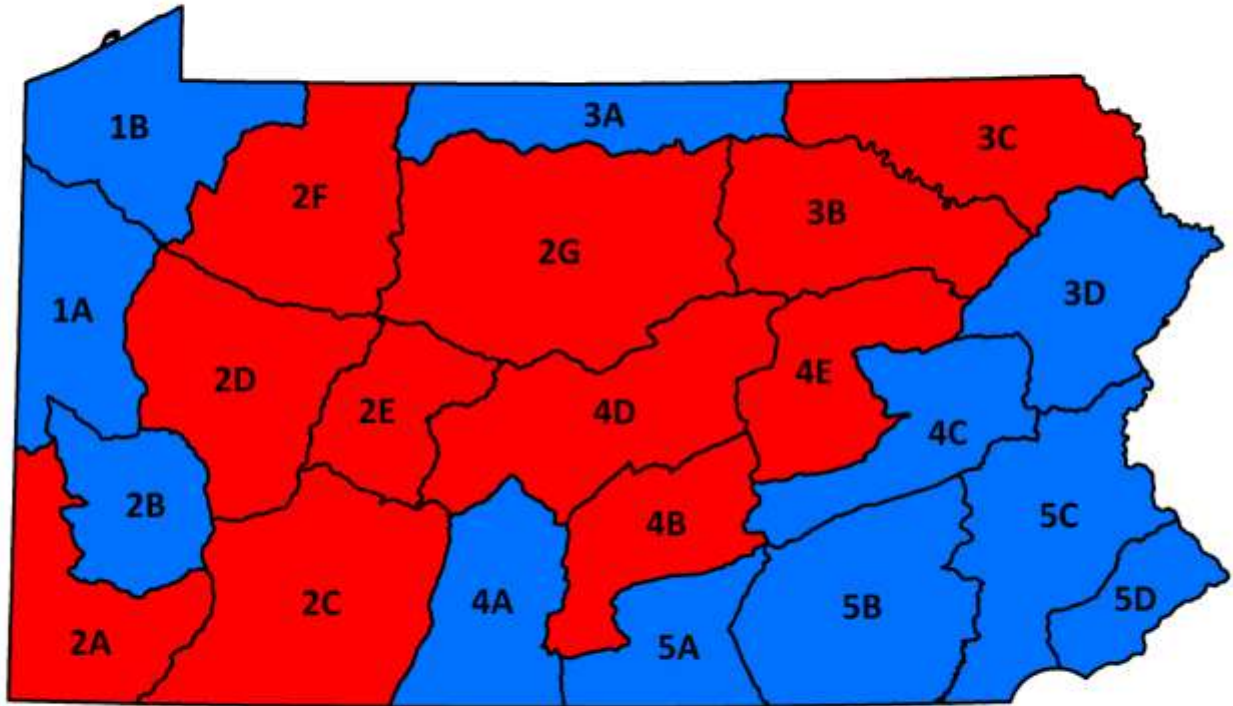
**No WMUs have good regeneration.**



**All CACs are complete, with most recommending stable or lower populations.**



## 2011-12 Approved Regular Firearms Seasons



12-day Concurrent Antlered and Antlerless Season

5-day Antlered and 7-day Antlered and Antlerless Concurrent Season

# Example of WMU Antlerless Allocation Worksheet

Antlered and antlerless harvests point estimates will differ from those in news releases. Estimates in news releases are rounded to the nearest 100 or 1,000 based on precision of the estimate. In addition, the 2003 estimates were estimated using a different method.

For information on the proper use and interpretation of deer population estimates, please see the document, "Monitoring deer populations in Pennsylvania" on the white-tailed deer page of the Game Commission's website,

Harvest fawn to doe ratio is calculated as percent of fawns in the antlerless harvest.

The number of antlerless licenses sold that it takes to harvest an antlerless deer. The number sold will differ from the allocation.

**2011-12 Pennsylvania Game Commission Antlerless Allocation Worksheet**

**WMU and Year** → WMU 1A, Year 2011-12

**WMU Characteristics**

WMU Characteristics					
% Developed	% Forest	%Ag/Field	%Public	Area (sq mi)	
9%	45%	36%	3%	1,846	

**Deer Harvest**

Year	Antlered	Antlerless	Allocation	Lic/Deer <sup>1</sup>
2003	5,557	16,772	44,000	2.5
2004	5,098	15,631	48,000	3.0
2005	5,468	13,427	40,000	2.9
2006	5,791	13,214	42,000	3.1
2007	4,896	12,490	42,000	3.3
2008	5,392	12,611	42,000	3.3
2009	5,500	10,689	42,000	4.0
2010	5,918	11,940	41,705	3.5

**Antlered Harvest Graph**

**Deer Population** → Trend: Stable

Year	Total
2005	61,482
2006	94,131
2007	63,864
2008	68,861
2009	73,798
2010	68,974

**Deer Population Graph**

**DEER HEALTH: Fawn to Doe Ratio<sup>2</sup>** → Trend: Stable

Year	Total
2003	0.44
2004	0.44
2005	0.45
2006	0.48
2007	0.48
2008	0.44
2009	0.44
2009	0.45
2010	0.46

**Fawn to Doe Graph**

**FOREST HABITAT HEALTH: Forest Regeneration** → Assessment: Fair, Trend: Stable

Year	% Adequate
2001-05	49%
2002-06	47%
2003-07	49%
2004-08	49%
2005-09	48%
2006-10	53%

**Regeneration Graph**

**Citizen Advisory Committee Recommendation** → Increase

**2011-12 Antlerless Allocation Options**

Firearm Season Option	Decrease	Stable	Increase
12 day concurrent	49,000	42,000	36,000
5 day antlered & 7 day concurrent	59,000	50,000	43,000

## 2011-12 Pennsylvania Game Commission Antlerless Allocation Worksheet

<b>WMU</b>	1A	<b>WMU Characteristics</b>				
<b>Year</b>	2011-12	% Developed	% Forest	%Ag/Field	%Public	Area (sq mi)
		9%	45%	36%	3%	1,846

### Deer Harvest

Year	Antlered	Antlerless	Allocation	Lic/Deer <sup>1</sup>
2003	5,557	16,772	44,000	2.5
2004	5,098	15,631	48,000	3.0
2005	5,468	13,427	40,000	2.9
2006	5,791	13,214	42,000	3.1
2007	4,896	12,490	42,000	3.3
2008	5,392	12,611	42,000	3.3
2009	5,500	10,689	42,000	4.0
2010	5,918	11,940	41,705	3.5

### Deer Population

Year	Total	Trend	Stable
2005	81,482		
2006	94,131		
2007	63,864		
2008	68,861		
2009	73,798		
2010	68,974		

### DEER HEALTH: Fawn to Doe Ratio<sup>2</sup>

Year	Total	Trend	Stable
2003	0.44		
2004	0.44		
2005	0.48		
2006	0.48		
2007	0.48		
2008	0.44		
2009	0.45		
2010	0.46		

### FOREST HABITAT HEALTH: Forest Regeneration

Year	% Adequate	Assessment	Fair	Trend	Stable
2001-05	49%				
2002-06	47%				
2003-07	49%				
2004-08	49%				
2005-09	48%				
2006-10	53%				

### Citizen Advisory Committee Recommendation

Increase

#### 2011-12 Antlerless Allocation Options

Firearm Season Option	Decrease	Stable	Increase
12 day concurrent	49,000	42,000	36,000
5 day antlered & 7 day concurrent	59,000	50,000	43,000

**APPROVED ALLOCATION: 42,000**

## 2011-12 Pennsylvania Game Commission Antlerless Allocation Worksheet

<b>WMU</b>	1B	<b>WMU Characteristics</b>				
<b>Year</b>	2011-12	% Developed	% Forest	%Ag/Field	%Public	Area (sq mi)
		7%	54%	32%	4%	2,115

### Deer Harvest

Year	Antlered	Antlerless	Allocation	Lic/Deer <sup>1</sup>
2003	6,142	17,520	37,000	2.1
2004	5,362	12,013	33,000	2.7
2005	6,382	10,707	27,000	2.5
2006	6,773	11,974	30,000	2.5
2007	6,010	11,400	30,000	2.6
2008	7,507	13,390	30,000	2.2
2009	5,089	9,474	30,000	3.2
2010	5,470	9,233	27,844	3.0

### Deer Population

Year	Total
2005	84,078
2006	94,054
2007	82,345
2008	97,872
2009	71,504
2010	76,665

Trend      Stable

### DEER HEALTH: Fawn to Doe Ratio<sup>2</sup>

Year	Total
2003	0.42
2004	0.40
2005	0.44
2006	0.42
2007	0.43
2008	0.41
2009	0.43
2010	0.44

Trend      Stable

### FOREST HABITAT HEALTH: Forest Regeneration

Year	% Adequate
2001-05	41%
2002-06	37%
2003-07	36%
2004-08	39%
2005-09	41%
2006-10	45%

Assessment      Fair      Trend      Stable

### Citizen Advisory Committee Recommendation

Stable, increase if habitat improves

#### 2011-12 Antlerless Allocation Options

Firearm Season Option	Decrease	Stable	Increase
12 day concurrent	36,000	30,000	24,000
5 day antlered & 7 day concurrent	43,000	36,000	29,000

**APPROVED ALLOCATION: 30,000**

## 2011-12 Pennsylvania Game Commission Antlerless Allocation Worksheet

<b>WMU</b>	2A	<b>WMU Characteristics</b>				
<b>Year</b>	2011-12	% Developed	% Forest	%Ag/Field	%Public	Area (sq mi)
		7%	61%	29%	3%	1,811

### Deer Harvest

Year	Antlered	Antlerless	Allocation	Lic/Deer <sup>1</sup>
2003	7,472	16,381	45,000	2.7
2004	7,751	18,534	55,000	2.9
2005	8,510	19,649	55,000	2.7
2006	8,104	16,987	55,000	3.2
2007	6,560	14,322	60,000	3.9
2008	6,714	15,255	55,000	3.5
2009	6,829	13,920	55,000	4.0
2010	5,830	13,463	54,879	4.1

### Deer Population

Year	Total	Trend	Decrease
2005	96,069		
2006	99,017		
2007	75,950		
2008	78,309		
2009	72,970		
2010	68,028		

### DEER HEALTH: Fawn to Doe Ratio<sup>2</sup>

Year	Total	Trend	Stable
2003	0.40		
2004	0.41		
2005	0.35		
2006	0.39		
2007	0.43		
2008	0.40		
2009	0.38		
2010	0.36		

### FOREST HABITAT HEALTH: Forest Regeneration

Year	% Adequate	Assessment	Poor	Trend	Decrease
2001-05	51%				
2002-06	49%				
2003-07	38%				
2004-08	40%				
2005-09	39%				
2006-10	37%				

### Citizen Advisory Committee Recommendation

Stable

#### 2011-12 Antlerless Allocation Options

Firearm Season Option	Decrease	Stable	Increase
12 day concurrent	61,000	54,000	47,000
5 day antlered & 7 day concurrent	73,000	65,000	56,000

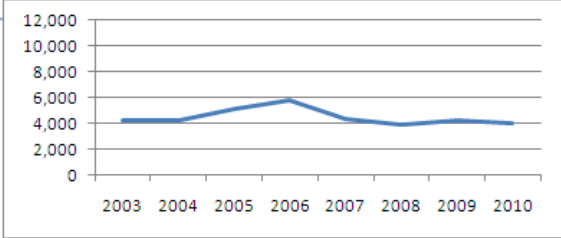
**APPROVED ALLOCATION: 65,000**

## 2011-12 Pennsylvania Game Commission Antlerless Allocation Worksheet

<b>WMU</b>	2B	<b>WMU Characteristics</b>				
<b>Year</b>	2011-12	% Developed	% Forest	%Ag/Field	%Public	Area (sq mi)
		30%	44%	21%	0%	1,363

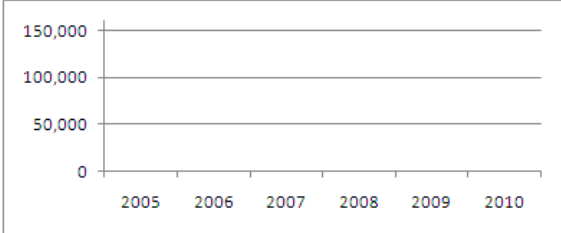
### Deer Harvest

Year	Antlered	Antlerless	Allocation	Lic/Deer <sup>1</sup>
2003	4,257	13,718	45,000	3.2
2004	4,198	15,984	68,000	4.1
2005	5,182	14,459	68,000	4.4
2006	5,759	16,505	68,000	3.9
2007	4,372	15,332	68,000	3.9
2008	3,964	15,251	68,000	4.1
2009	4,297	19,866	68,000	3.3
2010	3,976	13,008	68,000	4.8



### Deer Population

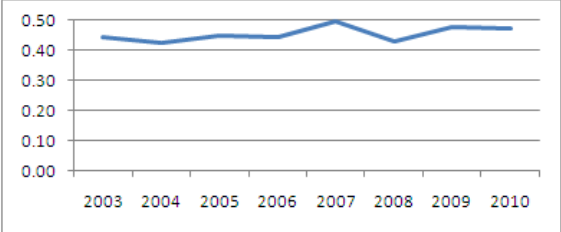
Year	Total
2005	
2006	
2007	
2008	
2009	
2010	



Trend      Stable

### DEER HEALTH: Fawn to Doe Ratio<sup>2</sup>

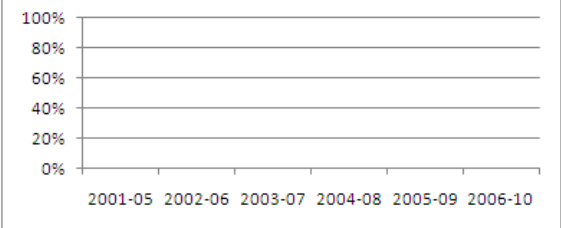
Year	Total
2003	0.44
2004	0.43
2005	0.45
2006	0.44
2007	0.50
2008	0.43
2009	0.48
2010	0.47



Trend      Stable

### FOREST HABITAT HEALTH: Forest Regeneration

Year	% Adequate
2001-05	
2002-06	
2003-07	
2004-08	
2005-09	
2006-10	



Assessment      Trend

### Citizen Advisory Committee Recommendation

Decrease

#### 2011-12 Antlerless Allocation Options

Firearm Season Option	Decrease	Stable	Increase
12 day concurrent	71,000	66,000	60,000
5 day antlered & 7 day concurrent	85,000	79,000	72,000

**APPROVED ALLOCATION: 71,000**

## 2011-12 Pennsylvania Game Commission Antlerless Allocation Worksheet

<b>WMU</b>	2C	<b>WMU Characteristics</b>				
<b>Year</b>	2011-12	% Developed	% Forest	%Ag/Field	%Public	Area (sq mi)
		6%	68%	24%	10%	3,100

### Deer Harvest

Year	Antlered	Antlerless	Allocation	Lic/Deer <sup>1</sup>
2003	11,118	24,381	65,000	2.6
2004	8,554	19,476	75,000	3.8
2005	7,413	13,683	53,000	3.8
2006	9,049	12,094	49,000	4.0
2007	8,441	11,619	49,000	4.1
2008	7,476	12,752	49,000	3.8
2009	6,508	10,870	49,000	4.5
2010	8,528	9,579	44,107	4.5

### Deer Population

Trend      Stable

Year	Total
2005	125,302
2006	145,410
2007	150,246
2008	133,998
2009	104,698
2010	107,368

### DEER HEALTH: Fawn to Doe Ratio<sup>2</sup>

Trend      Stable

Year	Total
2003	0.40
2004	0.41
2005	0.45
2006	0.42
2007	0.49
2008	0.43
2009	0.43
2010	0.40

### FOREST HABITAT HEALTH: Forest Regeneration

Assessment      Fair      Trend      Stable

Year	% Adequate
2001-05	53%
2002-06	50%
2003-07	48%
2004-08	52%
2005-09	50%
2006-10	51%

### Citizen Advisory Committee Recommendation

Increase

#### 2011-12 Antlerless Allocation Options

Firearm Season Option	Decrease	Stable	Increase
12 day concurrent	61,000	48,000	34,000
5 day antlered & 7 day concurrent	73,000	58,000	41,000

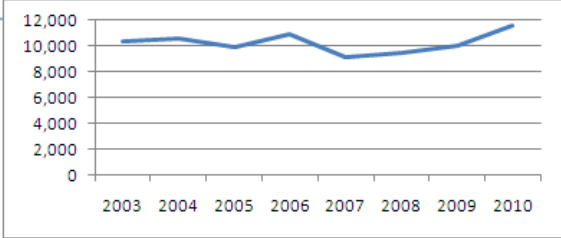
**APPROVED ALLOCATION: 58,000**

## 2011-12 Pennsylvania Game Commission Antlerless Allocation Worksheet

<b>WMU</b>	2D	<b>WMU Characteristics</b>				
<b>Year</b>	2011-12	% Developed	% Forest	%Ag/Field	%Public	Area (sq mi)
		5%	60%	31%	2%	2,486

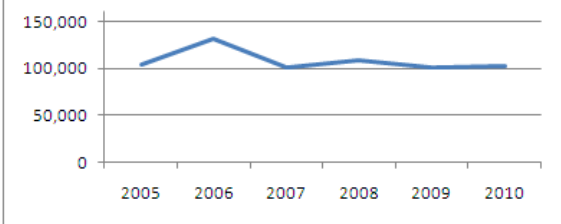
### Deer Harvest

Year	Antlered	Antlerless	Allocation	Lic/Deer <sup>1</sup>
2003	10,330	25,096	58,000	2.2
2004	10,550	22,101	58,000	2.6
2005	9,975	22,054	56,000	2.5
2006	10,896	20,437	56,000	2.7
2007	9,118	18,099	56,000	3.1
2008	9,508	15,591	56,000	3.5
2009	9,977	15,962	56,000	3.5
2010	11,540	18,046	50,123	2.8



### Deer Population

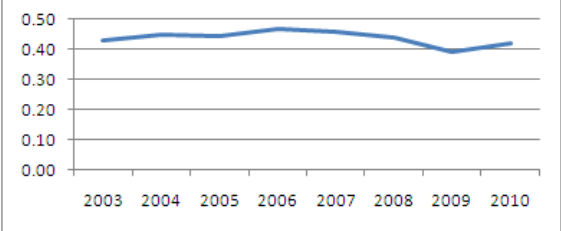
Year	Total
2005	104,586
2006	131,469
2007	100,893
2008	108,301
2009	101,455
2010	102,866



Trend      Stable

### DEER HEALTH: Fawn to Doe Ratio<sup>2</sup>

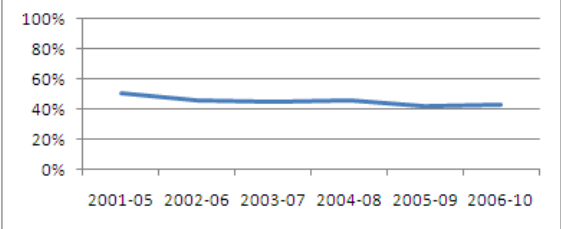
Year	Total
2003	0.43
2004	0.45
2005	0.45
2006	0.47
2007	0.46
2008	0.44
2009	0.39
2010	0.42



Trend      Stable

### FOREST HABITAT HEALTH: Forest Regeneration

Year	% Adequate
2001-05	51%
2002-06	46%
2003-07	45%
2004-08	46%
2005-09	42%
2006-10	43%



Assessment      Fair      Trend      Stable

### Citizen Advisory Committee Recommendation

Decrease

#### 2011-12 Antlerless Allocation Options

Firearm Season Option	Decrease	Stable	Increase
12 day concurrent	50,000	44,000	37,000
5 day antlered & 7 day concurrent	63,000	55,000	46,000

**APPROVED ALLOCATION: 60,000**

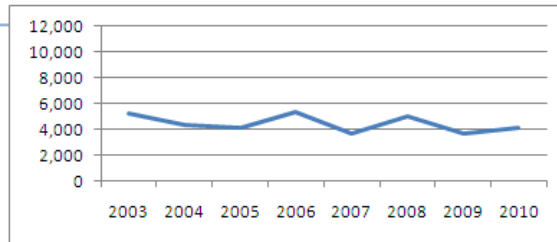
## 2011-12 Pennsylvania Game Commission Antlerless Allocation Worksheet

WMU 2E  
Year 2011-12

WMU Characteristics				
% Developed	% Forest	%Ag/Field	%Public	Area (sq mi)
5%	65%	26%	6%	1,261

### Deer Harvest

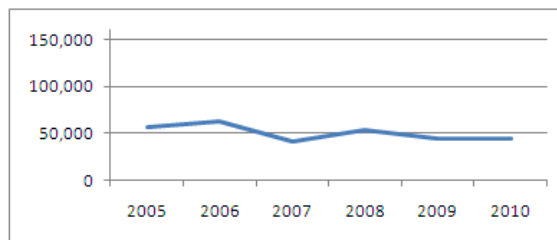
Year	Antlered	Antlerless	Allocation	Lic/Deer <sup>1</sup>
2003	5,295	12,545	29,000	2.2
2004	4,411	8,120	23,000	2.7
2005	4,093	7,471	21,000	2.8
2006	5,358	7,360	21,000	2.8
2007	3,642	6,398	21,000	3.2
2008	4,984	6,179	21,000	3.3
2009	3,673	5,298	21,000	4.0
2010	4,178	5,952	20,407	3.4



### Deer Population

Trend Stable

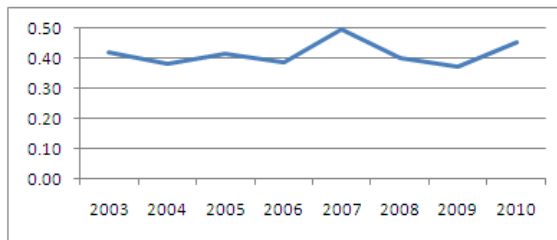
Year	Total
2005	56,949
2006	62,108
2007	41,687
2008	53,341
2009	43,859
2010	44,783



### DEER HEALTH: Fawn to Doe Ratio<sup>2</sup>

Trend Stable

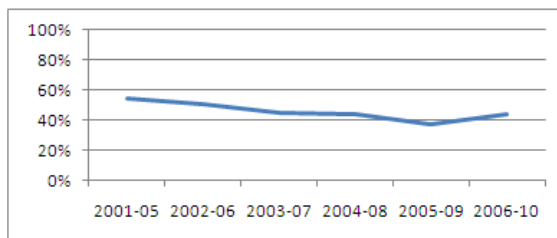
Year	Total
2003	0.42
2004	0.38
2005	0.41
2006	0.39
2007	0.50
2008	0.40
2009	0.37
2010	0.46



### FOREST HABITAT HEALTH: Forest Regeneration

Assessment Fair Trend Decrease

Year	% Adequate
2001-05	55%
2002-06	50%
2003-07	45%
2004-08	44%
2005-09	38%
2006-10	44%



### Citizen Advisory Committee Recommendation

Stable, increase if habitat improves

#### 2011-12 Antlerless Allocation Options

Firearm Season Option	Decrease	Stable	Increase
12 day concurrent	25,000	21,000	16,000
5 day antlered & 7 day concurrent	30,000	25,000	19,000

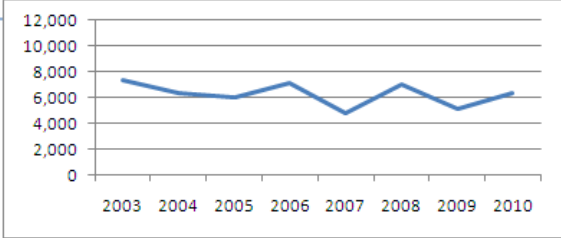
**APPROVED ALLOCATION: 25,000**

## 2011-12 Pennsylvania Game Commission Antlerless Allocation Worksheet

<b>WMU</b>	2F	<b>WMU Characteristics</b>				
<b>Year</b>	2011-12	% Developed	% Forest	%Ag/Field	%Public	Area (sq mi)
		2%	88%	7%	56%	2,409

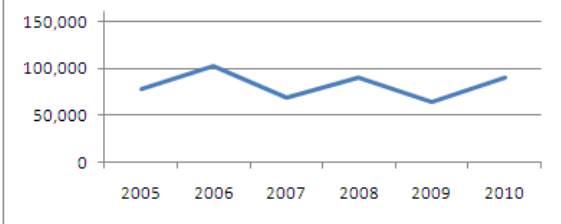
### Deer Harvest

Year	Antlered	Antlerless	Allocation	Lic/Deer <sup>1</sup>
2003	7,405	17,056	44,000	2.5
2004	6,408	13,124	44,000	3.3
2005	6,013	8,322	30,000	3.5
2006	7,153	8,030	28,000	3.5
2007	4,795	7,132	28,000	3.9
2008	6,990	9,117	28,000	3.0
2009	5,167	6,648	28,000	4.3
2010	6,403	5,657	22,148	4.0



### Deer Population

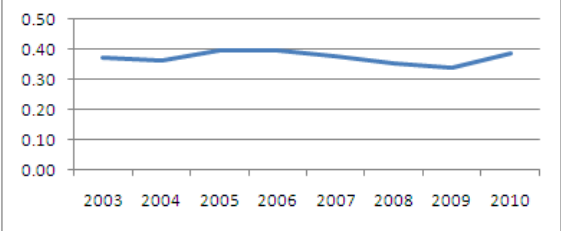
Year	Total
2005	77,660
2006	101,797
2007	69,408
2008	89,561
2009	64,850
2010	89,584



Trend      Stable

### DEER HEALTH: Fawn to Doe Ratio<sup>2</sup>

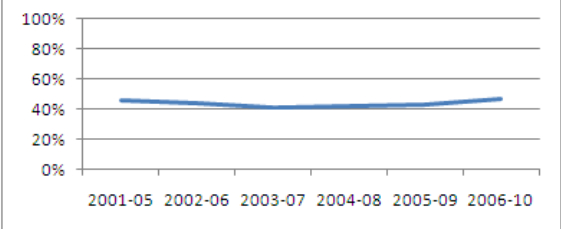
Year	Total
2003	0.37
2004	0.36
2005	0.40
2006	0.40
2007	0.38
2008	0.35
2009	0.34
2010	0.39



Trend      Stable

### FOREST HABITAT HEALTH: Forest Regeneration

Year	% Adequate
2001-05	46%
2002-06	44%
2003-07	42%
2004-08	42%
2005-09	43%
2006-10	47%



Assessment      Fair      Trend      Stable

### Citizen Advisory Committee Recommendation

Stable, increase if habitat improves & DMAP changes

#### 2011-12 Antlerless Allocation Options

Firearm Season Option	Decrease	Stable	Increase
12 day concurrent	36,000	27,000	18,000
5 day antlered & 7 day concurrent	43,000	32,000	22,000

**APPROVED ALLOCATION: 34,000**

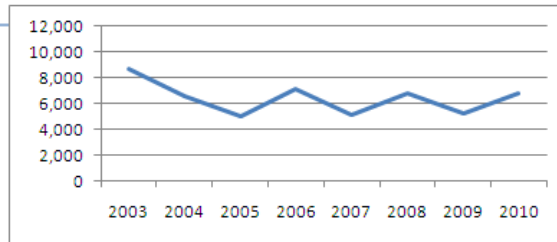
## 2011-12 Pennsylvania Game Commission Antlerless Allocation Worksheet

WMU 2G  
Year 2011-12

WMU Characteristics				
% Developed	% Forest	%Ag/Field	%Public	Area (sq mi)
2%	88%	8%	50%	4,114

### Deer Harvest

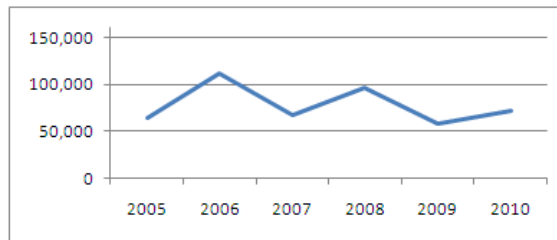
Year	Antlered	Antlerless	Allocation	Lic/Deer <sup>1</sup>
2003	8,675	15,386	52,000	3.3
2004	6,638	10,630	52,000	4.8
2005	5,003	6,189	29,000	4.6
2006	7,168	4,647	19,000	4.0
2007	5,140	6,613	26,000	3.9
2008	6,764	6,460	26,000	4.0
2009	5,216	4,246	26,000	6.2
2010	6,774	3,623	15,210	4.3



### Deer Population

Trend Stable

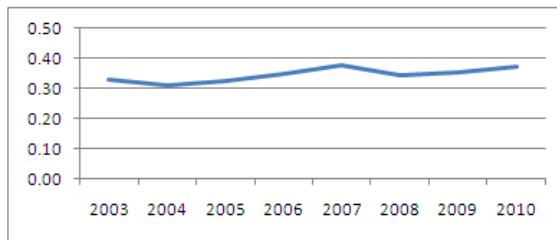
Year	Total
2005	64,457
2006	111,534
2007	67,202
2008	97,026
2009	58,654
2010	71,897



### DEER HEALTH: Fawn to Doe Ratio<sup>2</sup>

Trend Stable

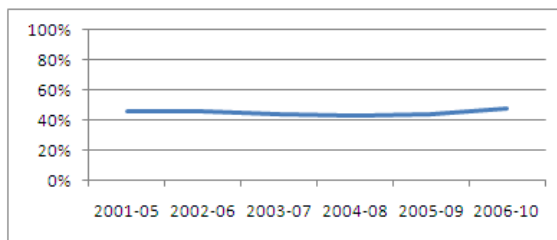
Year	Total
2003	0.33
2004	0.31
2005	0.33
2006	0.35
2007	0.38
2008	0.35
2009	0.35
2010	0.37



### FOREST HABITAT HEALTH: Forest Regeneration

Assessment Fair Trend Stable

Year	% Adequate
2001-05	46%
2002-06	46%
2003-07	44%
2004-08	43%
2005-09	44%
2006-10	48%



### Citizen Advisory Committee Recommendation

No Consensus

#### 2011-12 Antlerless Allocation Options

Firearm Season Option	Decrease	Stable	Increase
12 day concurrent	34,000	18,000	2,000
5 day antlered & 7 day concurrent	43,000	23,000	3,000

**APPROVED ALLOCATION: 23,000**

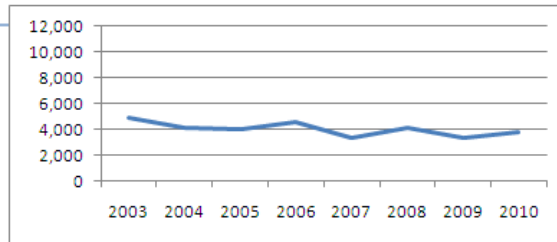
## 2011-12 Pennsylvania Game Commission Antlerless Allocation Worksheet

WMU 3A  
Year 2011-12

WMU Characteristics				
% Developed	% Forest	%Ag/Field	%Public	Area (sq mi)
2%	78%	17%	10%	1,506

### Deer Harvest

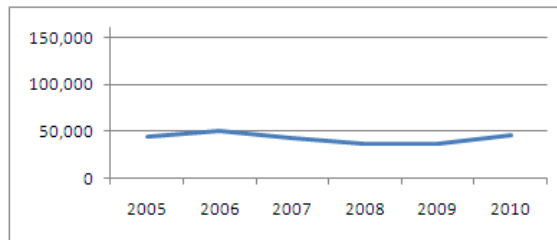
Year	Antlered	Antlerless	Allocation	Lic/Deer <sup>1</sup>
2003	4,861	12,179	28,000	2.2
2004	4,172	11,559	32,000	2.7
2005	3,981	8,657	27,000	3.1
2006	4,527	8,818	29,000	3.2
2007	3,359	7,803	29,000	3.6
2008	4,132	7,478	26,000	3.4
2009	3,310	5,998	26,000	4.4
2010	3,751	6,469	25,247	3.9



### Deer Population

Trend Stable

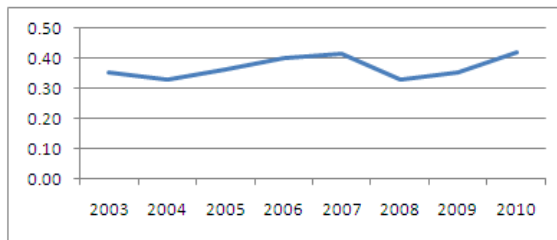
Year	Total
2005	45,168
2006	51,146
2007	42,718
2008	37,198
2009	37,457
2010	45,651



### DEER HEALTH: Fawn to Doe Ratio<sup>2</sup>

Trend Stable

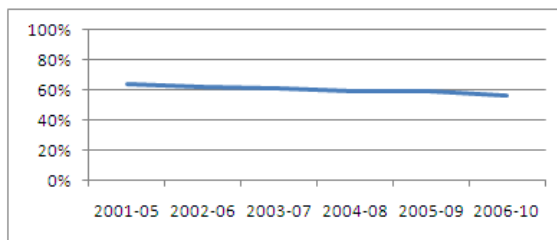
Year	Total
2003	0.35
2004	0.33
2005	0.36
2006	0.40
2007	0.42
2008	0.33
2009	0.35
2010	0.42



### FOREST HABITAT HEALTH: Forest Regeneration

Assessment Fair Trend Decrease

Year	% Adequate
2001-05	64%
2002-06	62%
2003-07	61%
2004-08	59%
2005-09	59%
2006-10	56%



### Citizen Advisory Committee Recommendation

Stable, increase if habitat improves

#### 2011-12 Antlerless Allocation Options

Firearm Season Option	Decrease	Stable	Increase
12 day concurrent	32,000	26,000	20,000
5 day antlered & 7 day concurrent	38,000	31,000	24,000

**APPROVED ALLOCATION: 26,000**

## 2011-12 Pennsylvania Game Commission Antlerless Allocation Worksheet

<b>WMU</b>	3B	<b>WMU Characteristics</b>				
<b>Year</b>	2011-12	% Developed	% Forest	%Ag/Field	%Public	Area (sq mi)
		6%	79%	11%	21%	2,218

### Deer Harvest

Year	Antlered	Antlerless	Allocation	Lic/Deer <sup>1</sup>
2003	6,231	14,531	45,000	3.0
2004	6,376	13,361	48,000	3.5
2005	5,980	10,871	41,000	3.7
2006	6,530	10,563	43,000	4.0
2007	5,933	10,177	43,000	4.2
2008	5,469	9,857	43,000	4.3
2009	4,865	9,112	43,000	4.7
2010	5,369	7,585	33,761	4.5

### Deer Population

Year	Total
2005	66,885
2006	69,898
2007	69,521
2008	50,662
2009	55,176
2010	50,245

**Trend**      **Stable**

### DEER HEALTH: Fawn to Doe Ratio<sup>2</sup>

Year	Total
2003	0.40
2004	0.35
2005	0.41
2006	0.40
2007	0.43
2008	0.37
2009	0.40
2010	0.40

**Trend**      **Stable**

### FOREST HABITAT HEALTH: Forest Regeneration

Year	% Adequate
2001-05	52%
2002-06	53%
2003-07	54%
2004-08	55%
2005-09	57%
2006-10	60%

**Assessment**      Fair      **Trend**      Increasing

### Citizen Advisory Committee Recommendation

**Stable**

#### 2011-12 Antlerless Allocation Options

Firearm Season Option	Decrease	Stable	Increase
12 day concurrent	50,000	40,000	30,000
5 day antlered & 7 day concurrent	60,000	48,000	36,000

**APPROVED ALLOCATION: 40,000**

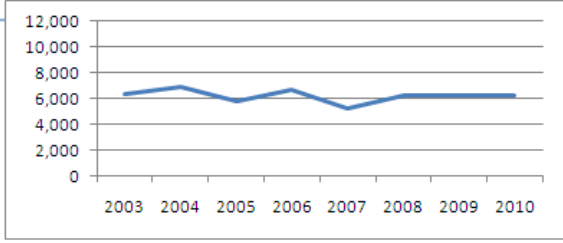
## 2011-12 Pennsylvania Game Commission Antlerless Allocation Worksheet

WMU 3C  
Year 2011-12

WMU Characteristics				
% Developed	% Forest	%Ag/Field	%Public	Area (sq mi)
4%	75%	16%	3%	2,187

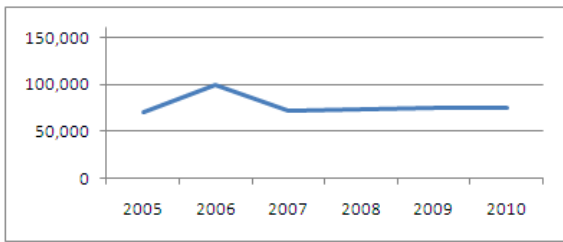
### Deer Harvest

Year	Antlered	Antlerless	Allocation	Lic/Deer <sup>1</sup>
2003	6,336	16,165	40,000	2.4
2004	6,929	13,470	37,000	2.7
2005	5,821	11,198	32,000	2.8
2006	6,673	9,248	27,000	2.9
2007	5,278	9,586	27,000	2.8
2008	6,288	7,258	27,000	3.7
2009	6,196	7,084	27,000	3.9
2010	6,211	8,309	26,358	3.2



### Deer Population

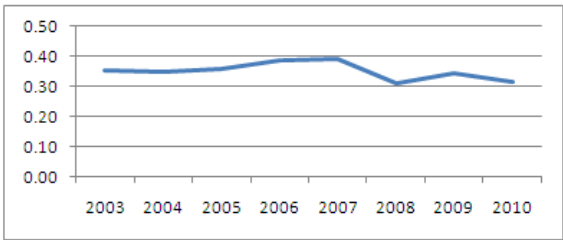
Year	Total
2005	71,046
2006	98,926
2007	72,001
2008	74,241
2009	75,752
2010	74,304



Trend Stable

### DEER HEALTH: Fawn to Doe Ratio<sup>2</sup>

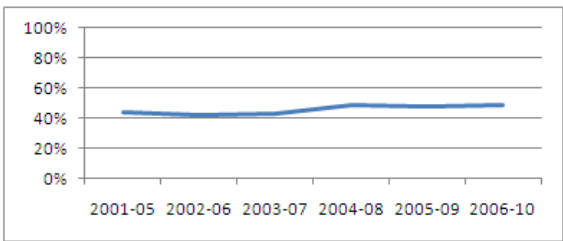
Year	Total
2003	0.35
2004	0.35
2005	0.36
2006	0.39
2007	0.39
2008	0.31
2009	0.35
2010	0.32



Trend Stable

### FOREST HABITAT HEALTH: Forest Regeneration

Year	% Adequate
2001-05	44%
2002-06	42%
2003-07	43%
2004-08	48%
2005-09	48%
2006-10	49%



Assessment Fair Trend Stable

### Citizen Advisory Committee Recommendation

Stable

#### 2011-12 Antlerless Allocation Options

Firearm Season Option	Decrease	Stable	Increase
12 day concurrent	30,000	23,000	16,000
5 day antlered & 7 day concurrent	37,000	29,000	20,000

**APPROVED ALLOCATION: 29,000**

## 2011-12 Pennsylvania Game Commission Antlerless Allocation Worksheet

<b>WMU</b>	3D	<b>WMU Characteristics</b>				
<b>Year</b>	2011-12	% Developed	% Forest	%Ag/Field	%Public	Area (sq mi)
		11%	74%	6%	16%	2,101

### Deer Harvest

Year	Antlered	Antlerless	Allocation	Lic/Deer <sup>1</sup>
2003	4,301	12,993	50,000	3.8
2004	4,496	9,844	50,000	5.0
2005	3,865	7,254	38,000	5.1
2006	4,969	7,445	38,000	5.0
2007	3,647	7,017	38,000	5.3
2008	3,899	6,925	37,000	5.3
2009	3,096	6,265	37,000	5.9
2010	3,884	5,509	31,622	5.7

### Deer Population

Year	Total	Trend	Decrease
2005	48,296		
2006	59,047		
2007	45,760		
2008	45,621		
2009	30,792		
2010	32,466		

### DEER HEALTH: Fawn to Doe Ratio<sup>2</sup>

Year	Total	Trend	Stable
2003	0.36		
2004	0.33		
2005	0.36		
2006	0.35		
2007	0.35		
2008	0.32		
2009	0.35		
2010	0.31		

### FOREST HABITAT HEALTH: Forest Regeneration

Year	% Adequate	Assessment	Fair	Trend	Stable
2001-05	52%				
2002-06	53%				
2003-07	51%				
2004-08	49%				
2005-09	49%				
2006-10	51%				

### Citizen Advisory Committee Recommendation

Stable, increase if habitat improves

### 2011-12 Antlerless Allocation Options

Firearm Season Option	Decrease	Stable	Increase
12 day concurrent	48,000	36,000	24,000
5 day antlered & 7 day concurrent	58,000	43,000	29,000

**APPROVED ALLOCATION: 39,000**

## 2011-12 Pennsylvania Game Commission Antlerless Allocation Worksheet

<b>WMU</b>	4A	<b>WMU Characteristics</b>				
<b>Year</b>	2011-12	% Developed	% Forest	%Ag/Field	%Public	Area (sq mi)
		4%	70%	24%	15%	1,736

### Deer Harvest

Year	Antlered	Antlerless	Allocation	Lic/Deer <sup>1</sup>
2003	6,455	13,987	37,000	2.6
2004	4,142	10,999	43,000	3.8
2005	3,714	7,578	35,000	4.5
2006	5,871	7,827	29,000	3.6
2007	4,477	6,735	29,000	4.2
2008	4,187	6,874	29,000	4.2
2009	3,733	7,414	29,000	3.9
2010	3,761	6,401	27,521	4.3

### Deer Population

Year	Total
2005	36,154
2006	54,823
2007	54,800
2008	33,760
2009	31,318
2010	34,778

**Trend**      **Stable**

### DEER HEALTH: Fawn to Doe Ratio<sup>2</sup>

Year	Total
2003	0.31
2004	0.36
2005	0.38
2006	0.38
2007	0.41
2008	0.34
2009	0.34
2010	0.32

**Trend**      **Stable**

### FOREST HABITAT HEALTH: Forest Regeneration

Year	% Adequate
2001-05	57%
2002-06	57%
2003-07	56%
2004-08	60%
2005-09	54%
2006-10	55%

**Assessment**      **Fair**      **Trend**      **Stable**

### Citizen Advisory Committee Recommendation

Stable, increase if habitat improves

### 2011-12 Antlerless Allocation Options

Firearm Season Option	Decrease	Stable	Increase
12 day concurrent	35,000	28,000	21,000
5 day antlered & 7 day concurrent	42,000	34,000	25,000

**APPROVED ALLOCATION: 28,000**

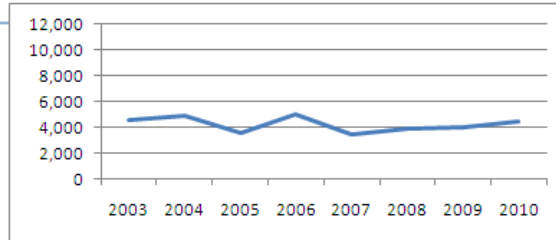
## 2011-12 Pennsylvania Game Commission Antlerless Allocation Worksheet

**WMU** 4B  
**Year** 2011-12

WMU Characteristics				
% Developed	% Forest	%Ag/Field	%Public	Area (sq mi)
6%	65%	27%	15%	1,591

### Deer Harvest

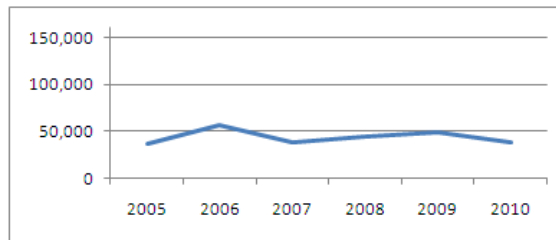
Year	Antlered	Antlerless	Allocation	Lic/Deer <sup>1</sup>
2003	4,555	11,183	38,000	3.2
2004	4,876	11,014	49,000	4.4
2005	3,571	6,644	35,000	5.2
2006	5,026	6,626	31,000	4.6
2007	3,472	4,509	23,000	5.0
2008	3,917	3,846	23,000	5.9
2009	4,011	4,061	23,000	5.7
2010	4,458	5,113	22,148	4.4



### Deer Population

Trend      Stable

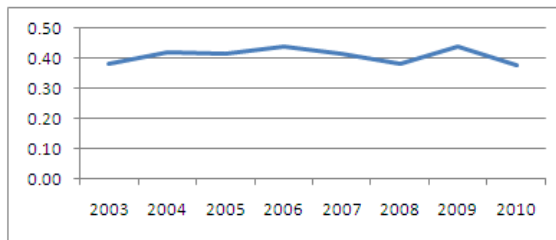
Year	Total
2005	37,405
2006	56,145
2007	38,084
2008	44,472
2009	49,650
2010	39,135



### DEER HEALTH: Fawn to Doe Ratio<sup>2</sup>

Trend      Stable

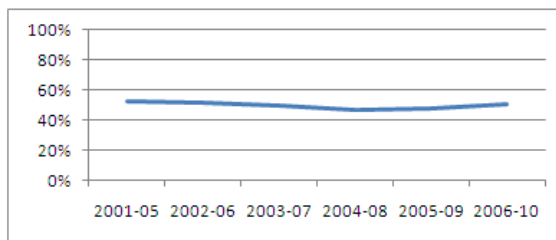
Year	Total
2003	0.38
2004	0.42
2005	0.41
2006	0.44
2007	0.41
2008	0.38
2009	0.44
2010	0.38



### FOREST HABITAT HEALTH: Forest Regeneration

Assessment      Fair      Trend      Stable

Year	% Adequate
2001-05	53%
2002-06	51%
2003-07	50%
2004-08	47%
2005-09	48%
2006-10	50%



### Citizen Advisory Committee Recommendation

Increase

#### 2011-12 Antlerless Allocation Options

Firearm Season Option	Decrease	Stable	Increase
12 day concurrent	25,000	18,000	12,000
5 day antlered & 7 day concurrent	31,000	23,000	15,000

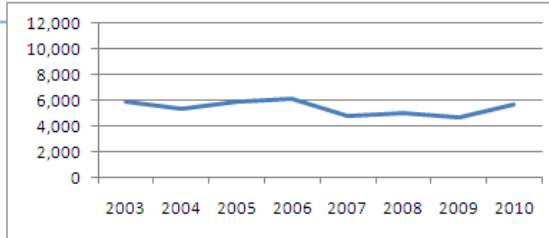
**APPROVED ALLOCATION: 23,000**

## 2011-12 Pennsylvania Game Commission Antlerless Allocation Worksheet

<b>WMU</b>	4C	<b>WMU Characteristics</b>				
<b>Year</b>	2011-12	% Developed	% Forest	%Ag/Field	%Public	Area (sq mi)
		8%	71%	17%	15%	1,717

### Deer Harvest

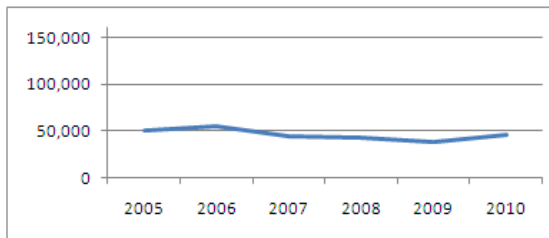
Year	Antlered	Antlerless	Allocation	Lic/Deer <sup>1</sup>
2003	5,968	13,526	46,000	3.3
2004	5,398	12,093	44,000	3.6
2005	5,891	9,805	39,000	3.9
2006	6,115	8,883	39,000	4.2
2007	4,828	9,375	39,000	4.1
2008	5,015	8,027	35,000	4.3
2009	4,745	7,163	35,000	4.9
2010	5,724	8,357	34,351	4.1



### Deer Population

Trend      Stable

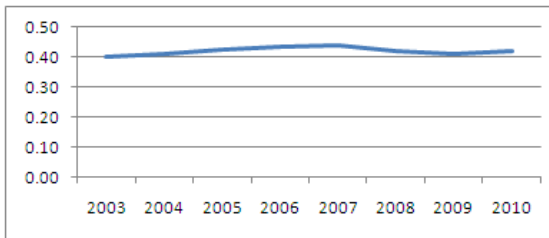
Year	Total
2005	50,238
2006	55,880
2007	43,968
2008	42,515
2009	39,095
2010	46,636



### DEER HEALTH: Fawn to Doe Ratio<sup>2</sup>

Trend      Stable

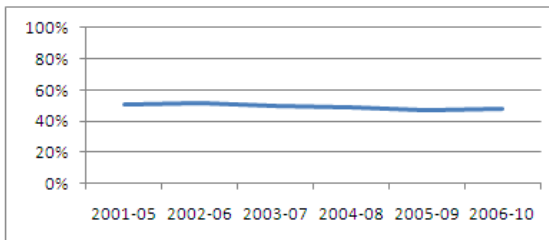
Year	Total
2003	0.40
2004	0.41
2005	0.42
2006	0.43
2007	0.44
2008	0.42
2009	0.41
2010	0.42



### FOREST HABITAT HEALTH: Forest Regeneration

Assessment      Fair      Trend      Decrease

Year	% Adequate
2001-05	51%
2002-06	52%
2003-07	50%
2004-08	49%
2005-09	47%
2006-10	48%



Year	Antlered	Antlerless	Allocation
------	----------	------------	------------

### Citizen Advisory Committee Recommendation

Increase

#### 2011-12 Antlerless Allocation Options

Firearm Season Option	Decrease	Stable	Increase
12 day concurrent	43,000	35,000	28,000
5 day antlered & 7 day concurrent	52,000	42,000	34,000

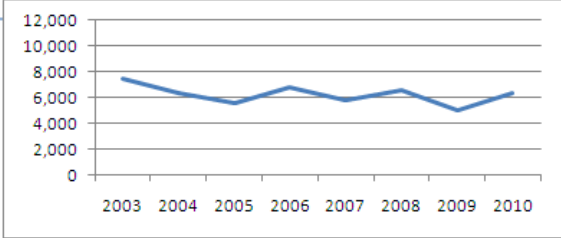
**APPROVED ALLOCATION: 35,000**

## 2011-12 Pennsylvania Game Commission Antlerless Allocation Worksheet

<b>WMU</b>	4D	<b>WMU Characteristics</b>				
<b>Year</b>	2011-12	% Developed	% Forest	%Ag/Field	%Public	Area (sq mi)
		6%	70%	22%	28%	2,743

### Deer Harvest

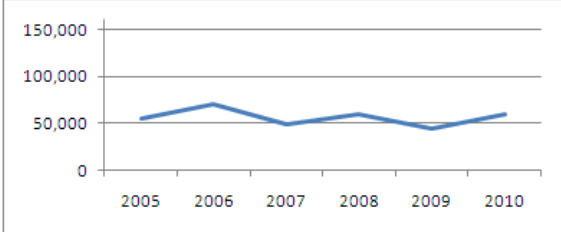
Year	Antlered	Antlerless	Allocation	Lic/Deer <sup>1</sup>
2003	7,508	18,367	58,000	3.1
2004	6,321	12,666	55,000	4.3
2005	5,591	8,354	40,000	4.7
2006	6,776	9,878	40,000	4.0
2007	5,765	8,073	40,000	4.9
2008	6,593	9,310	40,000	4.2
2009	4,971	7,192	40,000	5.6
2010	6,321	5,472	30,052	5.6



### Deer Population

Trend      Stable

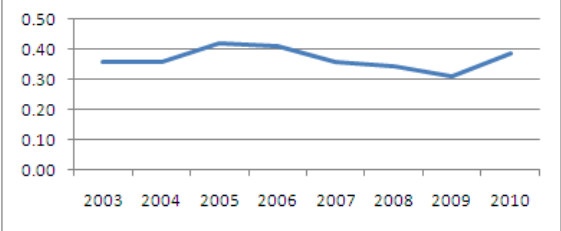
Year	Total
2005	55,385
2006	69,902
2007	49,169
2008	59,655
2009	43,982
2010	59,995



### DEER HEALTH: Fawn to Doe Ratio<sup>2</sup>

Trend      Stable

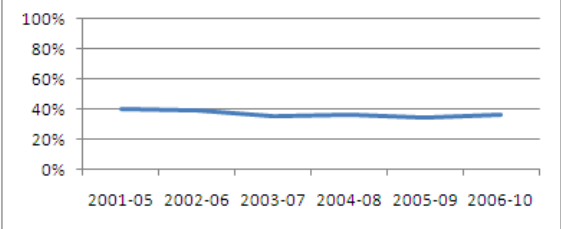
Year	Total
2003	0.36
2004	0.36
2005	0.42
2006	0.41
2007	0.36
2008	0.34
2009	0.31
2010	0.39



### FOREST HABITAT HEALTH: Forest Regeneration

Assessment      Poor      Trend      Stable

Year	% Adequate
2001-05	40%
2002-06	40%
2003-07	35%
2004-08	36%
2005-09	34%
2006-10	36%



### Citizen Advisory Committee Recommendation

Increase

#### 2011-12 Antlerless Allocation Options

Firearm Season Option	Decrease	Stable	Increase
12 day concurrent	51,000	37,000	23,000
5 day antlered & 7 day concurrent	61,000	44,000	28,000

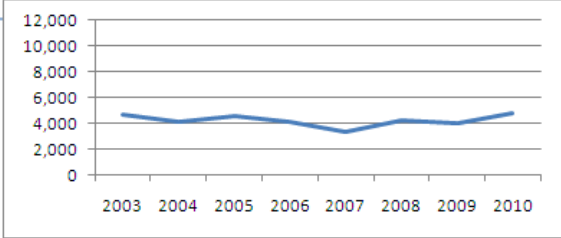
**APPROVED ALLOCATION: 37,000**

## 2011-12 Pennsylvania Game Commission Antlerless Allocation Worksheet

<b>WMU</b>	4E	<b>WMU Characteristics</b>				
<b>Year</b>	2011-12	% Developed	% Forest	%Ag/Field	%Public	Area (sq mi)
		8%	54%	34%	4%	1,736

### Deer Harvest

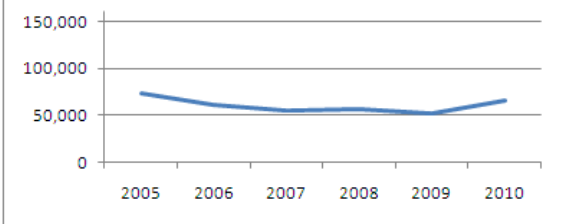
Year	Antlered	Antlerless	Allocation	Lic/Deer <sup>1</sup>
2003	4,746	11,974	38,000	3.1
2004	4,107	10,986	38,000	3.4
2005	4,544	9,130	38,000	4.1
2006	4,134	8,975	38,000	4.2
2007	3,314	8,119	38,000	4.6
2008	4,270	7,193	30,000	4.1
2009	4,064	6,287	30,000	4.8
2010	4,768	5,923	26,899	4.6



### Deer Population

Year	Total
2005	72,971
2006	61,983
2007	55,555
2008	56,175
2009	52,840
2010	65,894

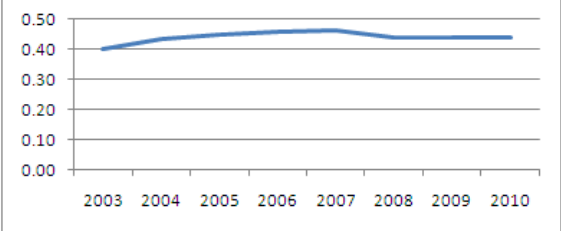
**Trend**      **Stable**



### DEER HEALTH: Fawn to Doe Ratio<sup>2</sup>

Year	Total
2003	0.40
2004	0.43
2005	0.45
2006	0.46
2007	0.46
2008	0.44
2009	0.44
2010	0.44

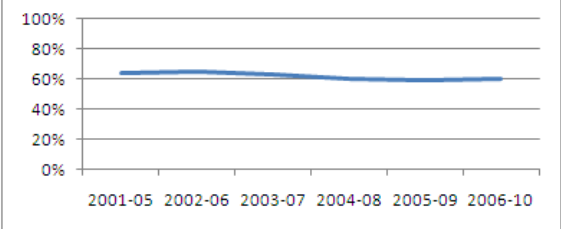
**Trend**      **Stable**



### FOREST HABITAT HEALTH: Forest Regeneration

Year	% Adequate
2001-05	64%
2002-06	65%
2003-07	63%
2004-08	60%
2005-09	59%
2006-10	60%

**Assessment**      **Fair**      **Trend**      **Stable**



### Citizen Advisory Committee Recommendation

**Increase**

#### 2011-12 Antlerless Allocation Options

Firearm Season Option	Decrease	Stable	Increase
12 day concurrent	37,000	29,000	21,000
5 day antlered & 7 day concurrent	44,000	35,000	25,000

**APPROVED ALLOCATION: 29,000**

## 2011-12 Pennsylvania Game Commission Antlerless Allocation Worksheet

<b>WMU</b>	5A	<b>WMU Characteristics</b>				
<b>Year</b>	2011-12	% Developed	% Forest	%Ag/Field	%Public	Area (sq mi)
		14%	35%	49%	11%	1,301

### Deer Harvest

Year	Antlered	Antlerless	Allocation	Lic/Deer <sup>1</sup>
2003	2,432	7,214	28,000	3.8
2004	2,350	7,289	32,000	4.3
2005	2,396	4,690	28,000	5.8
2006	2,155	5,207	25,000	4.7
2007	2,433	3,881	22,000	5.5
2008	2,057	3,778	19,000	4.9
2009	2,237	4,194	19,000	4.6
2010	2,442	3,398	18,269	5.4

### Deer Population

Trend      Stable

Year	Total
2005	30,340
2006	26,555
2007	31,290
2008	29,274
2009	29,739
2010	29,825

### DEER HEALTH: Fawn to Doe Ratio<sup>2</sup>

Trend      Stable

Year	Total
2003	0.39
2004	0.45
2005	0.47
2006	0.42
2007	0.44
2008	0.40
2009	0.37
2010	0.43

### FOREST HABITAT HEALTH: Forest Regeneration

Assessment      Fair      Trend      Decrease

Year	% Adequate
2001-05	63%
2002-06	64%
2003-07	61%
2004-08	61%
2005-09	60%
2006-10	56%

### Citizen Advisory Committee Recommendation

Increase

#### 2011-12 Antlerless Allocation Options

Firearm Season Option	Decrease	Stable	Increase
12 day concurrent	25,000	19,000	12,000
5 day antlered & 7 day concurrent	30,000	23,000	14,000

**APPROVED ALLOCATION: 19,000**

## 2011-12 Pennsylvania Game Commission Antlerless Allocation Worksheet

<b>WMU</b>	5B	<b>WMU Characteristics</b>				
<b>Year</b>	2011-12	% Developed	% Forest	%Ag/Field	%Public	Area (sq mi)
		19%	28%	49%	2%	2,640

### Deer Harvest

Year	Antlered	Antlerless	Allocation	Lic/Deer <sup>1</sup>
2003	7,847	16,993	60,000	3.4
2004	7,378	14,844	64,000	4.2
2005	7,381	11,717	56,000	4.6
2006	6,995	11,384	53,000	4.5
2007	5,974	11,143	53,000	4.6
2008	6,762	11,184	51,000	4.4
2009	6,007	11,321	51,000	4.5
2010	6,902	12,543	50,812	4.1

### Deer Population

Year	Total	Trend	Stable
2005	126,342		
2006	135,600		
2007	115,452		
2008	122,279		
2009	101,060		
2010	102,587		

### DEER HEALTH: Fawn to Doe Ratio<sup>2</sup>

Year	Total	Trend	Stable
2003	0.41		
2004	0.42		
2005	0.43		
2006	0.48		
2007	0.45		
2008	0.44		
2009	0.42		
2010	0.41		

### FOREST HABITAT HEALTH: Forest Regeneration

Year	% Adequate	Assessment	Poor	Trend	Decrease
2001-05	56%				
2002-06	45%				
2003-07	36%				
2004-08	39%				
2005-09	32%				
2006-10	35%				

### Citizen Advisory Committee Recommendation

No Consensus

### 2011-12 Antlerless Allocation Options

Firearm Season Option	Decrease	Stable	Increase
12 day concurrent	62,000	50,000	39,000
5 day antlered & 7 day concurrent	74,000	60,000	47,000

**APPROVED ALLOCATION: 50,000**

## 2011-12 Pennsylvania Game Commission Antlerless Allocation Worksheet

<b>WMU</b>	5C	<b>WMU Characteristics</b>				
<b>Year</b>	2011-12	% Developed	% Forest	%Ag/Field	%Public	Area (sq mi)
		27%	37%	31%	1%	2,472

### Deer Harvest

Year	Antlered	Antlerless	Allocation	Lic/Deer <sup>1</sup>
2003	7,738	18,929	66,000	3.4
2004	7,105	16,890	71,000	4.0
2005	7,701	17,589	71,000	3.9
2006	7,708	16,123	79,000	4.8
2007	6,526	18,864	84,000	4.3
2008	8,729	20,238	92,000	4.4
2009	7,566	23,214	113,000	4.8
2010	9,400	23,977	121,960	4.7

### Deer Population

Year	Total	Trend	Stable
2005			
2006			
2007			
2008			
2009			
2010			

### DEER HEALTH: Fawn to Doe Ratio<sup>2</sup>

Year	Total	Trend	Stable
2003	0.43		
2004	0.44		
2005	0.38		
2006	0.46		
2007	0.49		
2008	0.44		
2009	0.47		
2010	0.43		

### FOREST HABITAT HEALTH: Forest Regeneration

Year	% Adequate	Assessment	Trend
2001-05			
2002-06			
2003-07			
2004-08			
2005-09			
2006-10			

### Citizen Advisory Committee Recommendation

Decrease

#### 2011-12 Antlerless Allocation Options

Firearm Season Option	Decrease	Stable	Increase
12 day concurrent	117,000	106,000	94,000
5 day antlered & 7 day concurrent	140,000	127,000	113,000

**APPROVED ALLOCATION: 117,000**

## 2011-12 Pennsylvania Game Commission Antlerless Allocation Worksheet

<b>WMU</b>	5D	<b>WMU Characteristics</b>				
<b>Year</b>	2011-12	% Developed	% Forest	%Ag/Field	%Public	Area (sq mi)
		61%	18%	11%	0%	835

### Deer Harvest

Year	Antlered	Antlerless	Allocation	Lic/Deer <sup>1</sup>
2003	1,241	3,713	20,000	4.4
2004	1,330	4,170	20,000	4.5
2005	1,460	4,166	20,000	4.5
2006	1,315	4,074	20,000	4.7
2007	977	5,185	20,000	3.8
2008	1,343	4,533	22,000	4.7
2009	1,130	3,911	22,000	5.2
2010	1,144	3,721	22,000	5.1

### Deer Population

Year	Total
2005	
2006	
2007	
2008	
2009	
2010	

**Trend**      **Stable**

### DEER HEALTH: Fawn to Doe Ratio<sup>2</sup>

Year	Total
2003	0.42
2004	0.59
2005	0.43
2006	0.45
2007	0.45
2008	0.41
2009	0.49
2010	0.48

**Trend**      **Stable**

### FOREST HABITAT HEALTH: Forest Regeneration

Year	% Adequate
2001-05	
2002-06	
2003-07	
2004-08	
2005-09	
2006-10	

**Assessment**      **Trend**

### Citizen Advisory Committee Recommendation

Decrease

#### 2011-12 Antlerless Allocation Options

Firearm Season Option	Decrease	Stable	Increase
12 day concurrent	22,000	20,000	16,000
5 day antlered & 7 day concurrent	29,000	24,000	19,000

**APPROVED ALLOCATION: 22,000**