

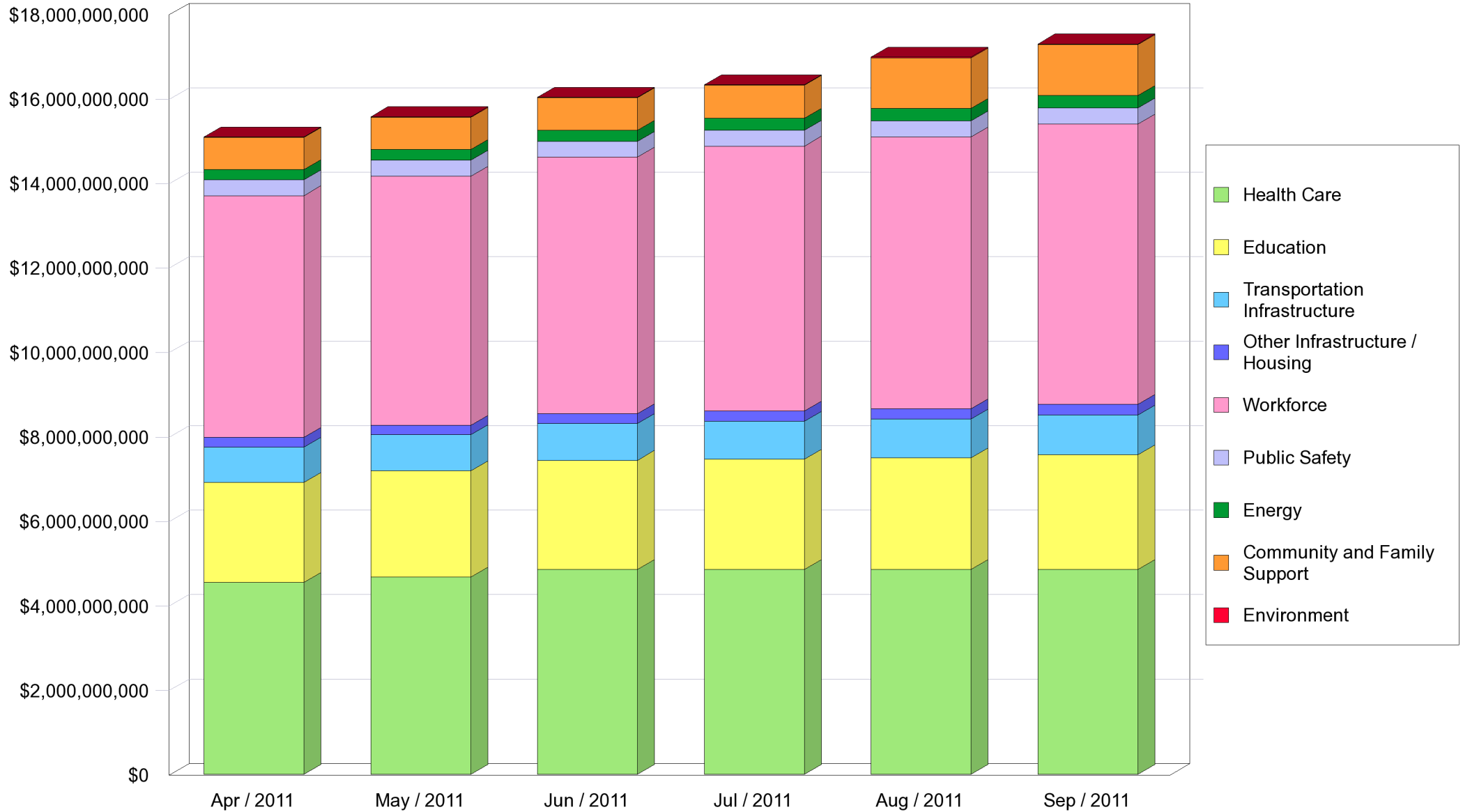
# Recovery Act Cumulative Investment



**Total Already Spent:** Total Already Spent is the total amount of federal Recovery Act expenditures incurred by the Commonwealth to date.

**Total Investment To Date:** Total Investment To Date is the sum of "Already Spent" and "In Progress." In a limited number of programs, the amount In Progress, and consequently the Total Investment to Date, may include funds which are in the process of being reassigned. This could temporarily cause the Total Investment to Date to exceed the Total Anticipated Investment. This report shows the amount In Progress as it is reflected in the accounting system on the report date.

# Recovery Act Cumulative Spending (by Category) (Already Spent)



# Recovery Act Cumulative Spending (Already Spent by Category) As of September 2011: \$17,292,144,516

