

## Preliminary Agenda

### Guest Speakers

- To Be Determined

### Topics to Include:

- To Be Determined

### A.C.T.A.R. TEST

TBD

The seminar is open to **active** law enforcement reconstructionists **only**. Reconstructionists from out of state are welcome to attend.

Positive proof of I.D. **will** be required.

Bring a scientific calculator.

**There is no fee for the seminar.**

Prior seminars have been approved for 18 ACTAR CEU's.

**Seating is limited to the first 250 applicants.**

Applications for the seminar can be obtained at the PSP website:

<http://www.psp.state.pa.us/>

Applications will be available beginning in June 2012. **Send completed applications along with a copy of your Reconstruction Level training certificate or ACTAR credentials to the Southeast Training Center. Fax: (610) 584-9510.**

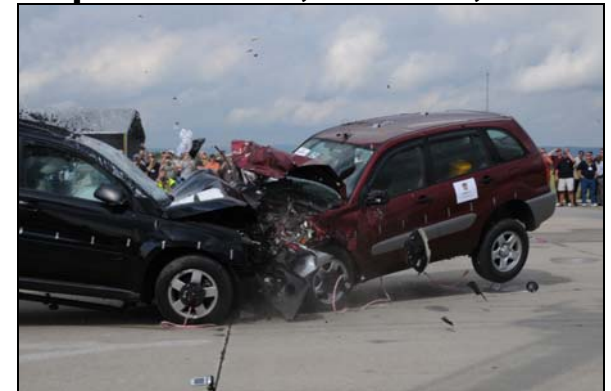
For more information or questions on the seminar or to obtain an application call or email (preferred): Sergeant Mark Pezzano at (610) 584-8633. Email address is [mpezzano@pa.gov](mailto:mpezzano@pa.gov)

# 12<sup>th</sup> ANNUAL Pennsylvania State Police



## Reconstruction Seminar

September 25, 26 & 27, 2012



*Ramada Inn  
and Conference Center  
Penn State*

*State College, Pa.*

# Reconstruction Seminar

## ***For All Law Enforcement Reconstructionists***

This seminar is designed for all collision reconstructionists. The purpose of the seminar is to allow reconstructionists to network with others in their field and to explore new ideas and technology in the dynamic field of collision reconstruction. The seminar will change each year and will concentrate on the review of interesting investigations, field studies, and training in specialized areas of reconstruction.

**September 25, 26 & 27, 2012**  
**Class Begins at 0800 hours**  
**Class Ends at 1600 hours**

**Location:**  
**Ramada Conference Center**  
**Penn State**  
**State College, Pa.**

*Call or email for an application  
to attend.*

### **Driving Directions:**

#### **From the East**

- \* From I-80 to Exit 161 (Bellefonte) follow PA Route 26 South.
- \* Route 26 South turns into Route 220 South.
- \* Stay on 220 South for 13 miles, take exit 74 to the left side. You will then be on Park Ave.
- \* Stay on Park Ave until you get to Beaver Stadium on your left.
- \* Then turn left onto University Drive.
- \* Stay on University Drive until it intersects with Atherton St. (Business Rt. 322).
- \* Turn right at the red light and we are approximately 1/4 mile on the left.

#### **From the West**

I-322E/I-99 to 322 Business/Atherton Street.  
Hotel is 6 miles.

#### **From Harrisburg**

- \* Follow signs to Route 22/322 West, past Lewistown
- \* Proceed to the Boalsburg exit (also Business Route 322)
- \* Go approximately four miles, Ramada Inn is located on the left side of the street

#### **From Pittsburgh**

- \* Follow Route 22 to Duncansville
- \* Take Route 220/I-99 North, bypassing Altoona & Tyrone
- \* After Port Matilda, take Route 322 East to State College
- \* Exit on Business Route 322/North Atherton Street
- \* Go approximately five miles, Ramada Inn is located on the right side of the street

### **Area Airports:**

University Park Airport  
Harrisburg Airport



**From University Park Airport:** Exit airport and take left on Fox Hollow Rd. Follow Fox Hollow Rd. to Park Ave. Take right hand turn at Park Ave. and take next left onto University Dr. Follow University Dr. to Atherton St. Hotel is 1/2 block ahead on left hand side of street.

**From Harrisburg Airport:** Follow 322 East to Business Route 322; Hotel is 3 miles on the left hand side of the street.

## **Hotel**



### **Ramada Conference Center**

1450 S Atherton Street  
State College, PA 16801  
Government/conference rate  
(be sure to advise that you are with the PSP Reconstruction Seminar)  
Double Room @ \$69 / tax  
Single room @ \$69 / tax  
Phone: 814-238-3001 Fax: 814-237-1345  
For more maps, directions and hotel information go to: [www.ramadasc.com/](http://www.ramadasc.com/)

***(Prices subject to change)***