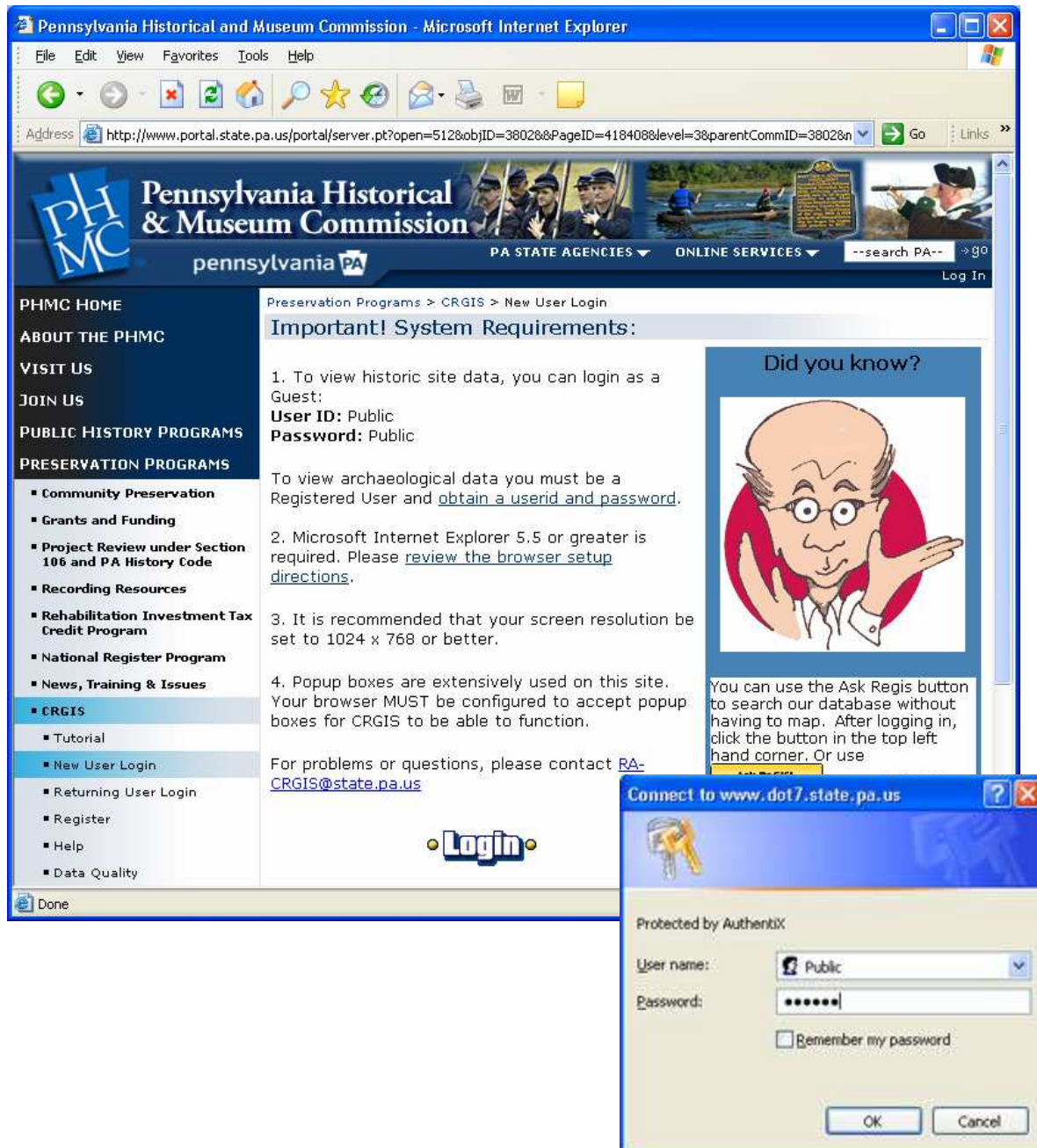
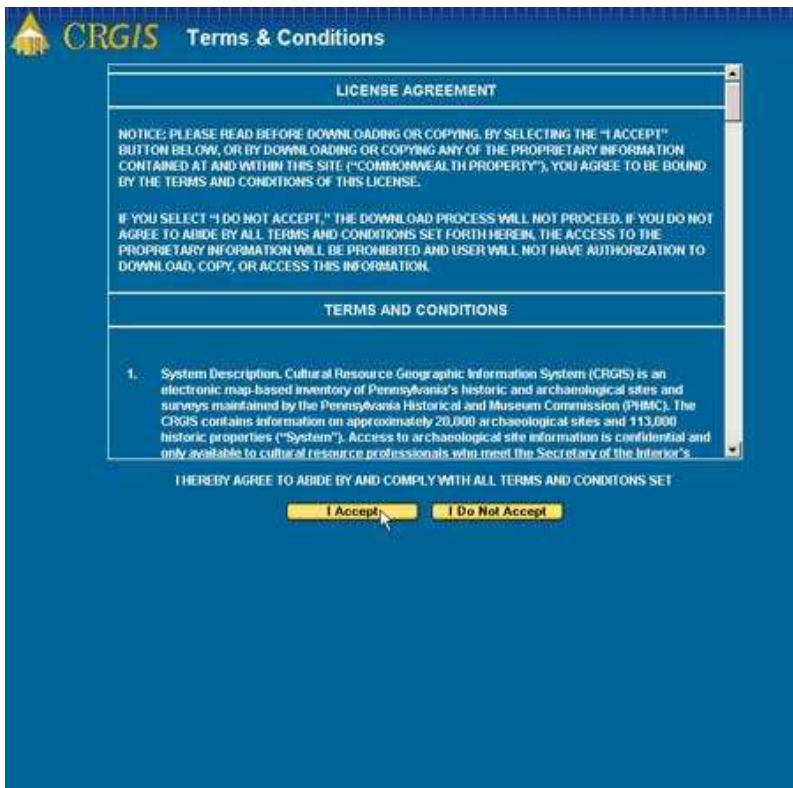


Welcome to the CRGIS user tutorial. This tutorial is divided into three sections: Login and Begin, Basic Map Functions, and Ask ReGIS. If you need further assistance after viewing this tutorial, please contact the CRGIS section at RA-CRGIS@state.pa.us.

Login and Begin

Select New User Login in the left navigation bar to access the login screen. Make sure your computer meets our System Requirements before proceeding. To enter CRGIS, click the Login button. To log in as a public user, type Public for the username and password. See the Register link in the left navigation bar for more information on how to obtain a registered username.





After you log in, you will come to the Terms and Conditions page. Please read the License Agreement and the Terms and Conditions in its entirety. If you accept, click the I Accept button to continue using CRGIS. If you do not accept all the set terms and conditions, click the I Do Not Accept button to return to the homepage.



Above is the main screen for CRGIS. Here you will choose what you would like to see on the map. You can also use the Ask ReGIS feature, which allows you to ask specific questions and build maps based on the answers.



The Select Map Layers section allows you to pick the information which will be displayed on the map. You can turn layers on or off by checking and unchecking the box next to the name. The color borders around the boxes are the default display colors for the layers on the map. To view which counties have soil data, click on the word Soils to see a map with available counties highlighted in green.



The Search Database with "Ask ReGIS" Query Tool section allows you to proceed to the Ask ReGIS Text-based search (click the Ask ReGIS! button) or to go to the help files for the query tool (click the Ask ReGIS Help button). For more help, view the Ask Regis tutorial below.



The Search Map with Location Query Tool section allows you to choose what geographic location you want to map. To Locate by Nearest Place Name, type in the name of the location and click the Find button. The location must be a feature that can be found on the USGS topographic map. For example, "400 North Street" would not work; "Harrisburg" would be appropriate. You will then be given the choice of an area of interest. Select which you would prefer to map and click the Map It! button. This will build your map.



The screenshot shows a web interface titled "Map an area of interest:". It has three main sections: "Locate By Nearest Place Name..." with a "Find" button; "Zoom To Address..." with fields for "Street Address" (containing "400 North St"), "Pennsylvania City" (containing "Harrisburg"), and "Zip Code", and a "Map It!" button; and "Locate By Specific Item(s)..." with a dropdown menu showing "Historic Site", "Archaeological Survey", and "PennDOT Project", and a "Map It!" button.

You can also build a map around a specific street address by using the Zoom To Address function. Type a street address in the Street Address field. Then type a city name in the Pennsylvania City field and/or type the zip code for the address. Click Map It! A map of the address and surrounding resources is generated. If the specific address cannot be located, the map will be then built around the center of the zip code.



The screenshot shows the same web interface, but with the "Locate By Specific Item(s)..." section selected. The dropdown menu is open, showing "Historic Site", "Archaeological Survey", and "PennDOT Project". The "Historic Site" option is selected. To the right of the dropdown is a text input field labeled "Enter Key Number" containing "000515". To the right of this field is a "Map It!" button. A note next to the "Map It!" button says "6 digit BHP Identification number (ex. 000160)".

You can also choose to build a map based on a specific item. Your choices under Locate By Specific Item(s) are Historic Site, Archaeological Survey, PennDOT Project, Bridge, Congressional District, Senatorial District, or Legislative District. If you are a registered user, you can also map by archaeological site. Select the option you would like to map, then enter the appropriate number in its correct format as indicated by the example to the right. Click Map It! to build the map.

Congratulations! You are on your way to building your own maps using CRGIS.