



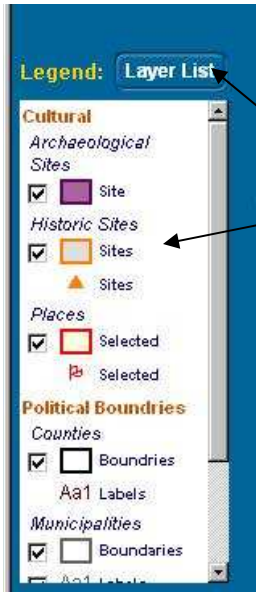
# Printing with SVG

(the new CRGIS map viewer)

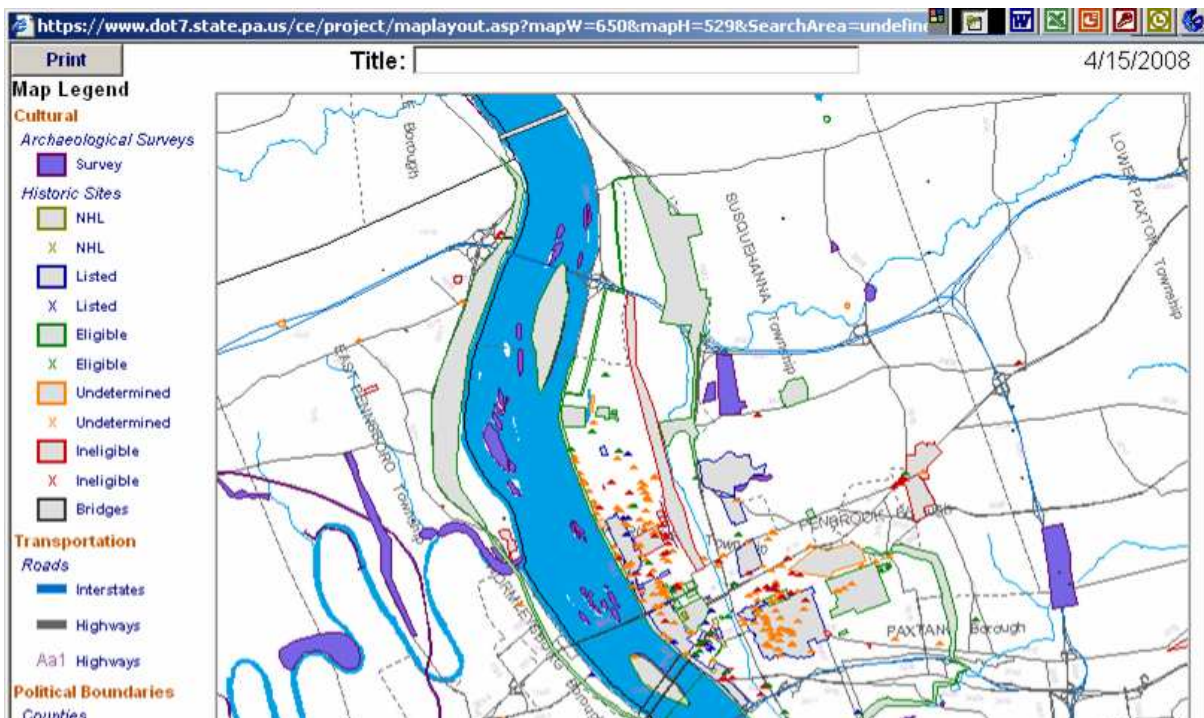
April 15, 2008



# The Printer Button

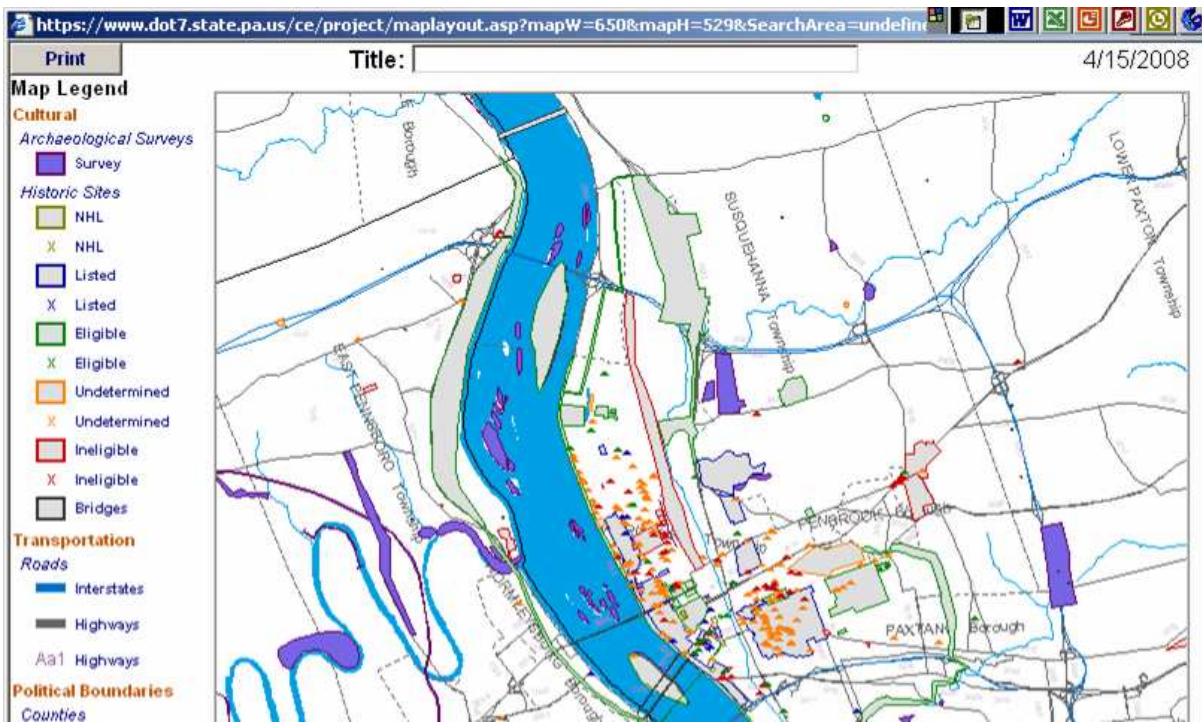


- Make sure that only the layers that you wish to print are active.
  - They are active if they show in the **Legend**, checked or unchecked.
  - If you selected others originally, use the **Layer List** to turn them off.
- The map printer does not retain the transparency of the map viewer.
  - You will open the window seen below and you can add a title to the map before printing.





# The Printer Button



## Advantages:

- Includes legend
- Includes scale indicator
- Includes direction indicator
- Can add title before printing
- Printer set up included - a “finished” look
- Can be saved directly as a PDF

## Disadvantages:

- Does not retain the transparency of the image
- Cannot add text and shapes (annotate)



# Control P Printing

If all you need is a copy of the map as is, you can use the keyboard printing function by holding down the “Ctrl” button and hitting the “P” and selecting the printer that you want (color is best).

## Advantages:

- Retains the transparency of the image
- Quick and easy

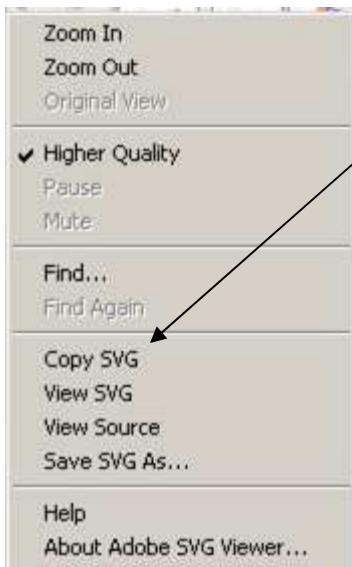
## Disadvantages:

- No legend
- No scale indicator
- No direction indicator
- Not a “finished” look



# Right Click Printing

This is the method that has changed the most.



- Right click on the map.
- Select **Copy SVG** from the popup menu
- Paste into any program that directly handles images: PowerPoint, Paint, or Photo Editor.
  - Photo Editor requires that you set a palette size, so this is more difficult.
  - Pasting in Word does not work.
- Use the capabilities of these programs to add text or shapes.
- Print.

## Advantages:

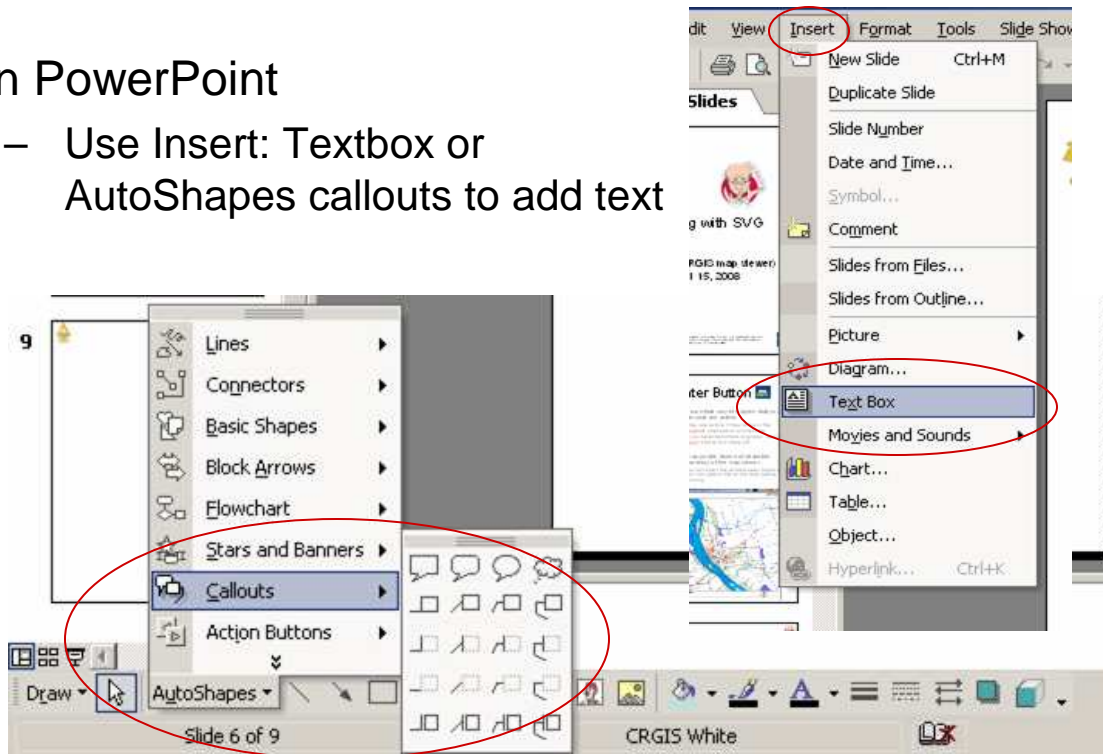
- Retains the transparency of the image
- Can add text and shapes
- Can add to a document after annotating

## Disadvantages:

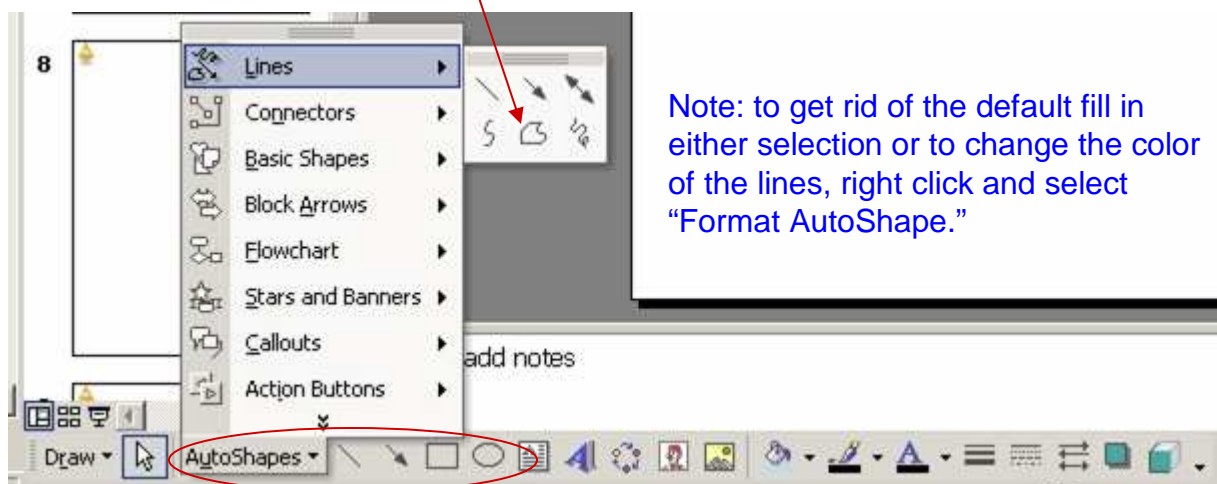
- No legend
- No scale indicator
- No direction indicator

# How to Annotate

- In PowerPoint
  - Use Insert: Textbox or AutoShapes callouts to add text



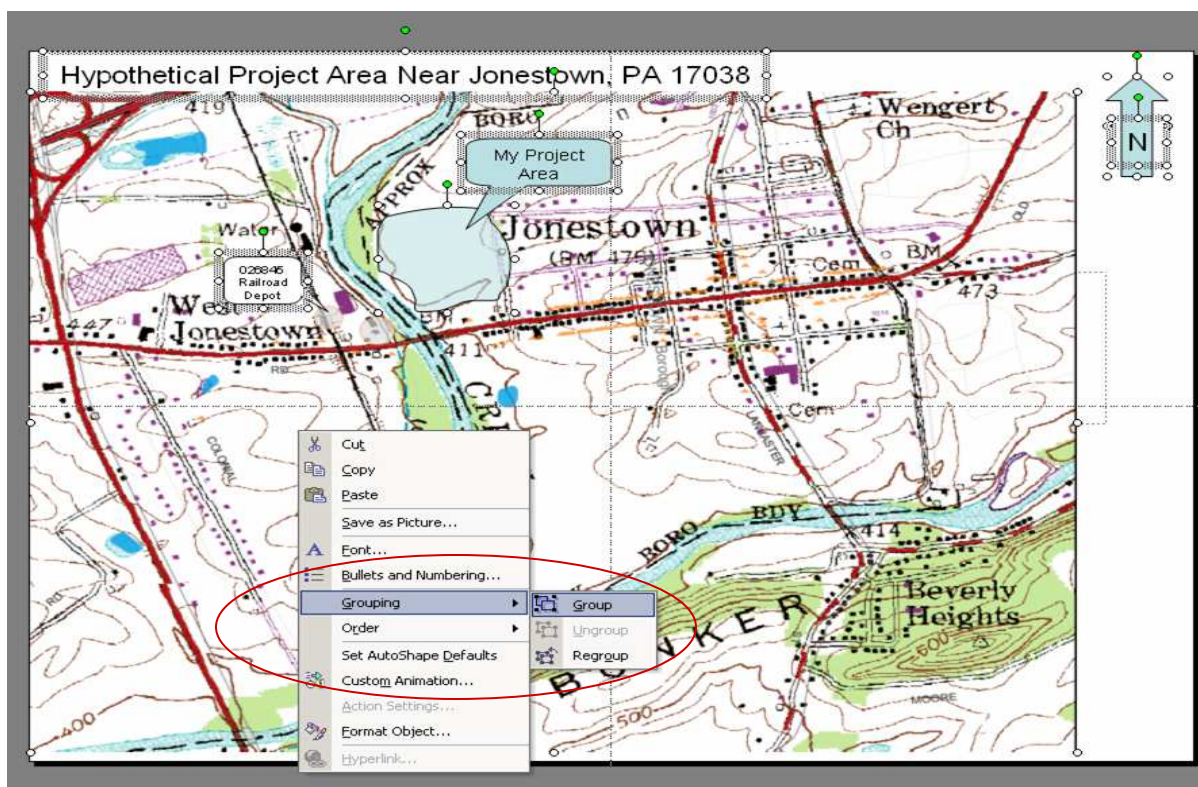
- Use arrows or standard shapes from the Drawing Toolbar or AutoShapes for indicating locations and outlining areas
  - The “Freeform” choice under AutoShape: Lines allows you to draw complex APES





# Saving Annotations

- Once you have annotated the map, you can print it, save it in the program you used to produce it, or save it as an image and import it into Word or any other program.
- To save as an image:
  - Select all the parts of the image that you want to keep together
  - Right click and select Grouping: Group



- Right click again and select Save As Picture
- Save as an image type (jpg or bmp, etc)
- Import anywhere that will allow a picture