



Pennsylvania Historical & Museum Commission

General Government Operations (GGO) Summary

The Pennsylvania Historical and Museum Commission (PHMC) is a statewide system of programs that supports the preservation of the Commonwealth's unique historical and cultural character. It is governed by an appointed commission first established in 1913 and currently employs 220 people spread among 25 distinct programs and locations.

The Trails of History is a network of sites and museums that represent all areas of the state and its major historical themes. Currently 11 of these locations are fully operated with PHMC staff; 21 are managed by other organizations under management agreements, and 10 are in a hybrid or transitional mode due to recent budget cuts that have reduced agency staffing by 40%. Sites and museums represent 381 buildings, 2,000 acres and important historical collections. They are visited by more than one million people each year and maintain 400,000 square feet of exhibitions.

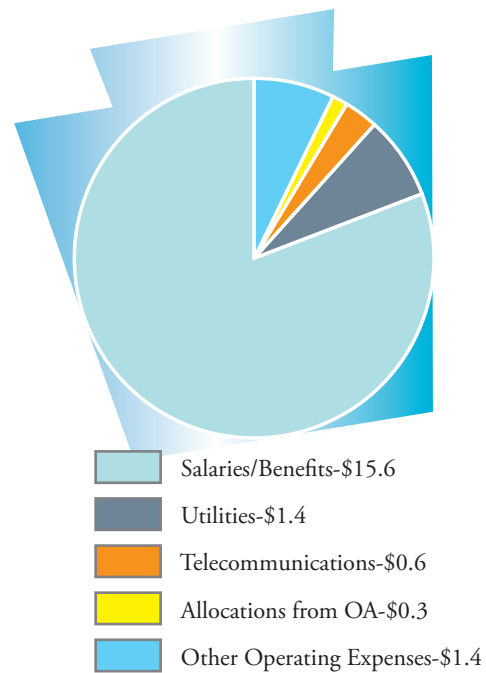
The State Museum of Pennsylvania provides multidisciplinary exhibitions and educational programs on the history, natural history and fine art of the Commonwealth. With 100,000 square feet of exhibition space and responsibility for the Commission's nearly five million artifacts, it is one of the largest museums in the state. It serves 130,000 visitors a year, including students, families and tourists.

The Pennsylvania State Archives holds 210 million pages of documents that preserve the historically valuable records of state government and ensures the efficient management of all state and local government records and the provision of open records to the public. The State Archives provides a broad range of other statewide services including collecting non-government documents, administering state and federal grant funds, assisting with disaster planning, and providing training and consulting services. The Pennsylvania State Bookstore publishes research and articles in *Pennsylvania Heritage*, books and electronic formats. The PHMC Web site has 256,000 visitors a year and 2,500 people annually perform research at the State Archives facility.

The State Historic Preservation Office (SHPO) works with state and federal agencies, local communities and individuals to preserve the character defining and historical resources that provide a sense of place for Pennsylvanians. SHPO administers the National Register program, provides consultation and reviews for state and federal projects, manages federal tax credits projects totally \$4.1 billion, offers training and public education, administers grants and maintains a system of more than 2,500 state historical markers.

General Government Operations (million dollars)

Salaries/Benefits	\$15.6	81%
Utilities	\$1.4	7%
Telecommunications	\$0.6	3%
Allocations from OA	\$0.3	2%
Other Operating Expenses	\$1.4	7%
Total GGO Budget (FY 2010-2011)	\$19.3	100%



Budgets (million dollars)

FY 2008-2009	FY 2009-2010	Governor's FY 2010-2011
\$25.8	\$19.5	\$19.3



Pennsylvania Historical & Museum Commission

Keystone Preservation Fund Summary

Origin: The Keystone Preservation Fund was established by the passage of the Keystone Recreation, Park and Conservation Fund Act (Act 1993-50) section 12(b), signed on July 2, 1993. On November 2, 1993, Pennsylvania voters overwhelmingly approved a public referendum incurring bond indebtedness by the Commonwealth in the amount of \$50 million to provide for the funding of nature preserves and wildlife habitats, and for improvements to and expansion of state parks, community parks and recreation facilities, historic sites, zoos and public libraries. The Keystone Preservation Fund is currently supported by a 15% allocation from the Pennsylvania Realty Transfer Tax revenues. The funds are divided among five state agencies: Department of Community and Economic Development-35%, Department of Conservation and Natural Resources-30%, State System of Higher Education-18%, Pennsylvania Historical and Museum Commission (PHMC)-13%, and Department of Education-4%.

Use of the fund: PHMC has received this funding annually from 1994 through 2008. These funds were used to gradually reduce deferred maintenance by replacing failed roofs, rotted joists and siding, painting buildings and funding mechanical system upgrades. It was also used to fund exhibition design and installation, institutional planning and conservation of historic objects. In addition, Keystone Preservation Funds have been leveraged as matching funds for federal preservation grants and to supplement or enhance capital projects. The Keystone Preservation Fund has provided general maintenance contracts for fire and security systems, HVAC and sanitary systems, and elevators.

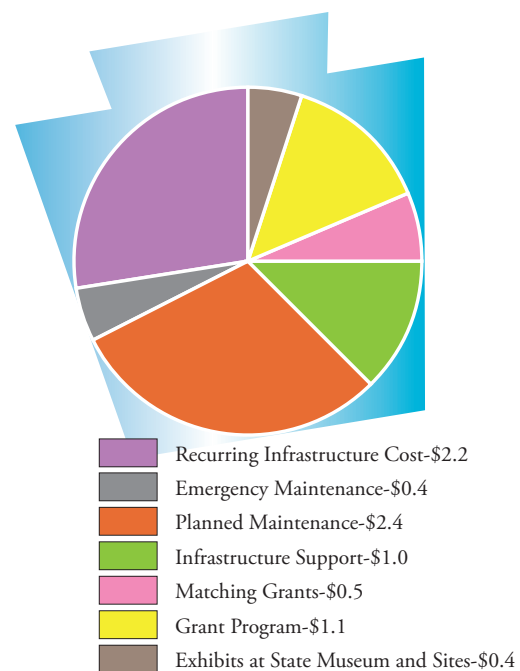
Current status: PHMC's portion of the Keystone Preservation Fund was entirely redirected to the general fund for the Commonwealth for fiscal year 2009-2010. The governor's budget for fiscal year 2010-2011 has restored PHMC's Keystone Preservation Funding at \$8 million.

Consequences of fund redirection: In fiscal year 2009-2010, the loss of Keystone Preservation Funds had a significant impact on the Bureau of Historic Sites and Museums and The State Museum of Pennsylvania. Maintenance, exhibit and planning projects were discontinued and many other scheduled maintenance projects were delayed. Loss of these funds for a second year in fiscal year 2010-2011 would have even more dramatic effects on PHMC's sites and museums. Critical maintenance contracts and services amounting to more than \$3 million would have to be covered by General Government Operations (GGO) funding, resulting in severely reduced funding for personnel and general site operation. The further loss of 35 to 45 employee positions at these historic sites

would make it difficult to continue to support the ongoing volunteer efforts of Friends and Associates groups and would severely limit their ability to provide fundraising activities and program support. This would result in, at best, enough funding for only one or two sites to operate on a limited schedule or, at worst, could result in all the remaining sites being closed to the public, with only a skeleton staff consisting of an administrator, a few regional curators and select building maintenance and security personnel left at sites to protect the Commonwealth's assets and comply with local ordinances.

Keystone Preservation Fund (million dollars)

Recurring Infrastructure Cost	\$2.2	28%
Emergency Maintenance	\$0.4	5%
Planned Maintenance	\$2.4	30%
Infrastructure Support	\$1.0	12%
Matching Grants	\$0.5	6%
Grant Program-		
Private Preservation Projects	\$1.1	14%
Exhibits at State Museum and Sites	\$0.4	5%
Total Keystone Budget (FY 2010-2011)	\$8.0	100%



Budgets (million dollars)

FY 2008-2009	FY 2009-2010	Governor's FY 2010-2011
\$8.2	\$0	\$8