

HIV/AIDS SURVEILLANCE

SEMI-ANNUAL

SUMMARY

COMMONWEALTH OF PENNSYLVANIA

December 2006

**DEPARTMENT OF
HEALTH**

*Edward G. Rendell, Governor
Calvin B. Johnson, M.D., M.P.H., Secretary of Health*

CONTACT INFORMATION & CONTRIBUTORS

**The HIV/AIDS Surveillance Biannual Summary is prepared by the
Bureaus of Epidemiology and Health Statistics & Research
Pennsylvania Department of Health**

Bureau of Epidemiology
Division of Infectious Disease Epidemiology
HIV/AIDS Surveillance & Epidemiology Section

Stephen Ostroff, MD, Bureau Director
Veronica Urdaneta, MD, MPH, Director, Division of Infectious Diseases
Godwin Obiri, MS, DrPH, Leader, HIV/AIDS Surveillance Section
Bonnie L. Krampe, MPH, Epidemiology Research Associate
Jacqueline Kruper, BS, MS, Epidemiology Program Specialist
Martin Ngokion, MD, MPH, Epidemiologist
Michael Allen, MPH, Epidemiology Program Specialist

Bureau of Health Statistics and Research
Division of Statistical Support

Patricia Potrzebowski, PhD, Bureau Director
Jerry Orris, Division Director
Alden Small, PhD, Statistical Analyst Supervisor
James Lehman, MS, Statistical Analyst

The HIV/AIDS Surveillance Section gratefully acknowledges the support of community health districts, county/municipal health departments, physicians, hospitals and laboratories reporting HIV and AIDS cases. This project is funded by a grant award from the Centers for Disease Control and Prevention(CDC).

Requests for reprints, quarterly updates and inquiries may be sent to:

ATTN: 'Biannual' Requests
HIV/AIDS Surveillance Section
Division of Infectious Disease Epidemiology
Bureau of Epidemiology
PA Department of Health
Room 933 H&W Bldg
7th & Forster Streets
Harrisburg, PA 17120

The data provided in the tables, figures and maps are based on reports received through June 30, 2007. Expanded analysis of data presented in the Biannual Summary and other HIV/AIDS Epidemiologic data may be requested by sending e-mail to c-hivepi@state.pa.us or through the Department's web site at: <http://www.health.state.pa.us/hiv-epi/> (please download the "Biannual Summary" or use the online Data Requests form at this site) or by telephone/fax to our office at 717-783-0481(tel) or 717-772-6975(fax). Please scroll down the menu of links on the left frame of the web site to "Quarterly/Biannual Summary" and "Data Requests", respectively.

The Pennsylvania Department of Health is an equal opportunity provider of grants, contracts, services and employment

Suggested Citation of Data Source: HIV/AIDS Surveillance Biannual Summary
Bureaus of Epidemiology & Health Statistics and Research, PA Dept. of Health

Publication Number: HD0234P

HIV/AIDS Surveillance Biannual Summary

Table of Contents

	PAGE
SUMMARY TABLE PENNSYLVANIA HIV (Non-AIDS) AND AIDS CASES, UNITED STATES AIDS CASES, PENNSYLVANIA HIV INFECTION	5
FIGURE 1 ANNUAL INCIDENCE 1980-2006	6
FIGURE 2 ANNUAL INCIDENCE 1980-2006, CURRENT MORTALITY STATUS BY YEAR OF DIAGNOSIS	7
TABLE 1 ANNUAL INCIDENCE 1980-2006, ADULT/ADOLESCENT AND PEDIATRIC BY YEAR OF DIAGNOSIS	8
TABLE 2 ANNUAL INCIDENCE 2000-2006, SEX AND RACE/ETHNICITY BY YEAR OF DIAGNOSIS	9
TABLE 3 1980-2000 and 2001-2006, ADULT/ADOLESCENT AND PEDIATRIC; RACE/ETHNICITY BY SEX	10
TABLE 4 ANNUAL INCIDENCE 2001-2006, AGE BY YEAR OF DIAGNOSIS	11
TABLE 5 ANNUAL INCIDENCE 2001-2006, MODE OF TRANSMISSION BY YEAR OF DIAGNOSIS	12
TABLE 6 1980-2000 and 2001-2006, MODE OF TRANSMISSION BY RACE/ETHNICITY	13
TABLE 7A 1980-2000 and 2001-2006, AIDS CASES INFECTED BEFORE AGE 13 BY MODE OF TRANSMISSION	14
TABLE 7B 2002-2006, HIV (Non-AIDS) CASES INFECTED BEFORE AGE 13 BY MODE OF TRANSMISSION	15
TABLE 8 AIDS DEFINING ILLNESSES BY TIME INTERVAL OF DIAGNOSIS, 1980-2000 and 2001-2006	16
TABLE 9A CUMULATIVE AIDS CASES 1980-2006, MORTALITY STATUS BY COUNTY OF RESIDENCE	17
TABLE 9B CUMULATIVE HIV (Non-AIDS) CASES 2002-2006, MORTALITY STATUS BY COUNTY OF RESIDENCE	18
TABLE 10 ANNUAL AIDS INCIDENCE 2000-2006 BY COUNTY OF RESIDENCE	19
FIGURE 3 ANNUAL INCIDENCE FOR 2005, NUMBER OF NEW CASES IN EACH COUNTY	20
FIGURE 4 ANNUAL INCIDENCE FOR 2005, INCIDENCE RATE (PER 100,000) FOR EACH COUNTY	21
TABLE 11A CHARACTERISTICS OF AIDS CASES BY TIME INTERVAL OF DIAGNOSIS, 1980-2006	22
TABLE 11B CHARACTERISTICS OF HIV (Non-AIDS) CASES BY TIME INTERVAL OF DIAGNOSIS, 2002-2006	23
<i>CHARACTERISTICS OF AIDS CASES FOR 7 GEOGRAPHICAL AREAS</i>	
TABLE 12A BY TIME INTERVAL OF AIDS DIAGNOSIS, 1980-2006, THE PHILADELPHIA AIDS CONSORTIUM	24
TABLE 12B BY TIME INTERVAL OF HIV(Non-AIDS) DIAGNOSIS, 2002-2006, AIDS ACTIVITIES COORDINATING OFFICE	25
TABLE 13A BY TIME INTERVAL OF DIAGNOSIS, 1980-2006, AIDSNET	26
TABLE 13B BY TIME INTERVAL OF HIV(Non-AIDS) DIAGNOSIS, 2002-2006, AIDSNET	27
TABLE 14A BY TIME INTERVAL OF DIAGNOSIS, 1980-2006, NORTHEASTERN REGIONAL HIV PLANNING COALITION	28
TABLE 14B BY TIME INTERVAL OF HIV(Non-AIDS) DIAGNOSIS, 2002-2006, NORTHEASTERN REGIONAL HIV PLANNING COALITION	29
TABLE 15A BY TIME INTERVAL OF DIAGNOSIS, 1980-2006, NORTH CENTRAL DISTRICT AIDS COALITION	30
TABLE 15B BY TIME INTERVAL OF HIV(Non-AIDS) DIAGNOSIS, 2002-2006, NORTH CENTRAL DISTRICT AIDS COALITION	31
TABLE 16A BY TIME INTERVAL OF DIAGNOSIS, 1980-2006, SOUTH CENTRAL PENNSYLVANIA AIDS PLANNING COALITION	32
TABLE 16B BY TIME INTERVAL OF HIV(Non-AIDS) DIAGNOSIS, 2002-2006, SOUTH CENTRAL PENNSYLVANIA AIDS PLANNING COALITION	33
TABLE 17A BY TIME INTERVAL OF DIAGNOSIS, 1980-2006, SOUTHWEST PENNSYLVANIA AIDS PLANNING COALITION	34
TABLE 17B BY TIME INTERVAL OF HIV(Non-AIDS) DIAGNOSIS, 2002-2006, SOUTHWEST PENNSYLVANIA AIDS PLANNING COALITION	35
TABLE 18A BY TIME INTERVAL OF DIAGNOSIS, 1980-2006, NORTHWEST PENNSYLVANIA RURAL AIDS ALLIANCE	36
TABLE 18B BY TIME INTERVAL OF HIV(Non-AIDS) DIAGNOSIS, 2002-2006, NORTHWEST PENNSYLVANIA RURAL AIDS ALLIANCE	37
<i>PUBLICLY FUNDED HIV COUNSELING & TESTING IN PENNSYLVANIA</i>	
TABLE 19 NUMBER OF VISITS BY CLIENT'S COUNTY OF RESIDENCE, 2001-2006	38
TABLE 20 NUMBER OF VISITS IN 2006 BY AGE, RACE/ETHNICITY AND SEX	39
TABLE 21 NUMBER OF VISITS IN 2006 BY SELF-ACKNOWLEDGED RISK EXPOSURE GROUP	40
NOTE LIMITATIONS OF HIV COUNSELING AND TESTING DATA FROM PUBLICLY SUPPORTED SITES	41

A Special Note for the Readers of Pennsylvania HIV/AIDS Surveillance Report
Explanation for an Unexpected Increase in AIDS Cases Diagnosed in 2006

This Bi-Annual report describes both HIV (non-AIDS) and AIDS cases diagnosed by December 31, 2006, and reported through June 30, 2007. HIV (non-AIDS) reporting started in Pennsylvania in October 2002 with retroactive case reporting to January 1, 2000.

Prior to December 2005, all HIV/AIDS case reporting and management was carried out in the Centers for Disease Control and Prevention's (CDC) HIV/AIDS Reporting System (HARS). On December 19, 2005 HIV/AIDS reporting and management was converted from HARS into the Pennsylvania National Electronic Disease Surveillance System (PA-NEDSS). Laboratories and providers are connected to the PA-NEDSS allowing direct reporting of cases into the data repository. With access to PA-NEDSS at the various reporting sites there is increase in reporting of HIV and AIDS indicative test results including low CD4 count and/or percent. This has resulted in tremendous reporting of lab test results more than was possible in the past. Laboratory based reporting through the PA-NEDSS has vastly improved the timeliness and completeness of case reporting.

Annual AIDS incidence has fallen over time from its high levels in the late 1980s and early 1990s, due to more effective treatments for people with HIV infection. However, in 2006, there was an unexpected increase in the number of AIDS cases (Figures 1 & 2 and Table 1) diagnosed far more than in the immediate preceding four years. The number of AIDS cases diagnosed in the 12 months of 2006 was 1,492, compared to 1,151 during the same period in 2005. This is a 29.6% increase in diagnosed cases. This observation in 2006 represents a departure from the past. However, this observation may not indicate a true increase in AIDS incidence or its diagnosis than in recent past periods; rather it may reflect an improvement in case reporting with the implementation of PA-NEDSS.

In summary, this observation might not reflect a true increase in AIDS incidence in 2006 over the recent past periods. The laboratory-based HIV and AIDS case reporting through PA-NEDSS has vastly improved both timeliness and completeness of case reporting in the Commonwealth.

Question or comment can be directed to
Dr. Godwin Obiri, Leader, HIV/AIDS Surveillance Section
Bureau of Epidemiology
717/783-0481 or e-mail: gobiri@state.pa.us.

SUMMARY TABLE

Cases of HIV(Human Immunodeficiency Virus), Perinatal Exposure to HIV,
and AIDS (Acquired Immune Deficiency Syndrome)
Among Pennsylvania Residents
Reported During the Periods Indicated Under Each Table*

The numbers below and in subsequent tables do not include potential AIDS cases that do not have information or are missing information for any of the following specific variables: a) Name of patient, b) Date of birth, c) Race or Ethnicity, d) Sex of patient, e) Vital status of patient, f) Date of AIDS diagnosis or Date of Opportunistic Infection, and g) County of residence when diagnosed. It also excludes records with certain logical inconsistencies (such as a date of death earlier than the date of birth).

PENNSYLVANIA (INCL. PHILADELPHIA COUNTY) AIDS CASES			
	NUMBER OF CASES	NUMBER DEAD	PERCENT DEAD
TOTAL(AIDS)	33,791	16,425	49
ADULT(AIDS)	33,429	16,272	49
PEDIATRIC(AIDS)	362	153	42

*Reported during the period January 1, 1980 through December 31, 2006

UNITED STATES AIDS CASES			
	NUMBER OF CASES	NUMBER DEAD	PERCENT DEAD
TOTAL(AIDS)	952,629	530,756	56
ADULT(AIDS)	943,517	525,441	56
PEDIATRIC(AIDS)	9,112	5,315	58

*Estimated Number of Diagnoses through December 31, 2005

Centers For Disease Control and Prevention.
HIV/AIDS Surveillance Report, 2005,vol 17 [12,16]

UNDUPLICATED HIV (NOT-AIDS) CASES & PERINATAL EXPOSURE, October 2002-December 2006			
	NUMBER OF CASES	NUMBER DEAD	PERCENT DEAD
TOTAL HIV(NOT AIDS)	5,152	71	1.4
ADULT	5,101	71	1.4
PEDIATRIC	51	0	0.0
<hr/>			
PERINATAL EXPOSURE (HIV indeterminate)	305	3	1.0

*First diagnosis reported (meeting respective case definitions) during the period October 20, 2002 through December 31, 2006

To show the difference in the number of HIV cases in Pennsylvania when the first diagnosis reported include cases from January 1, 2000 through December 31, 2006, a separate table is shown below.

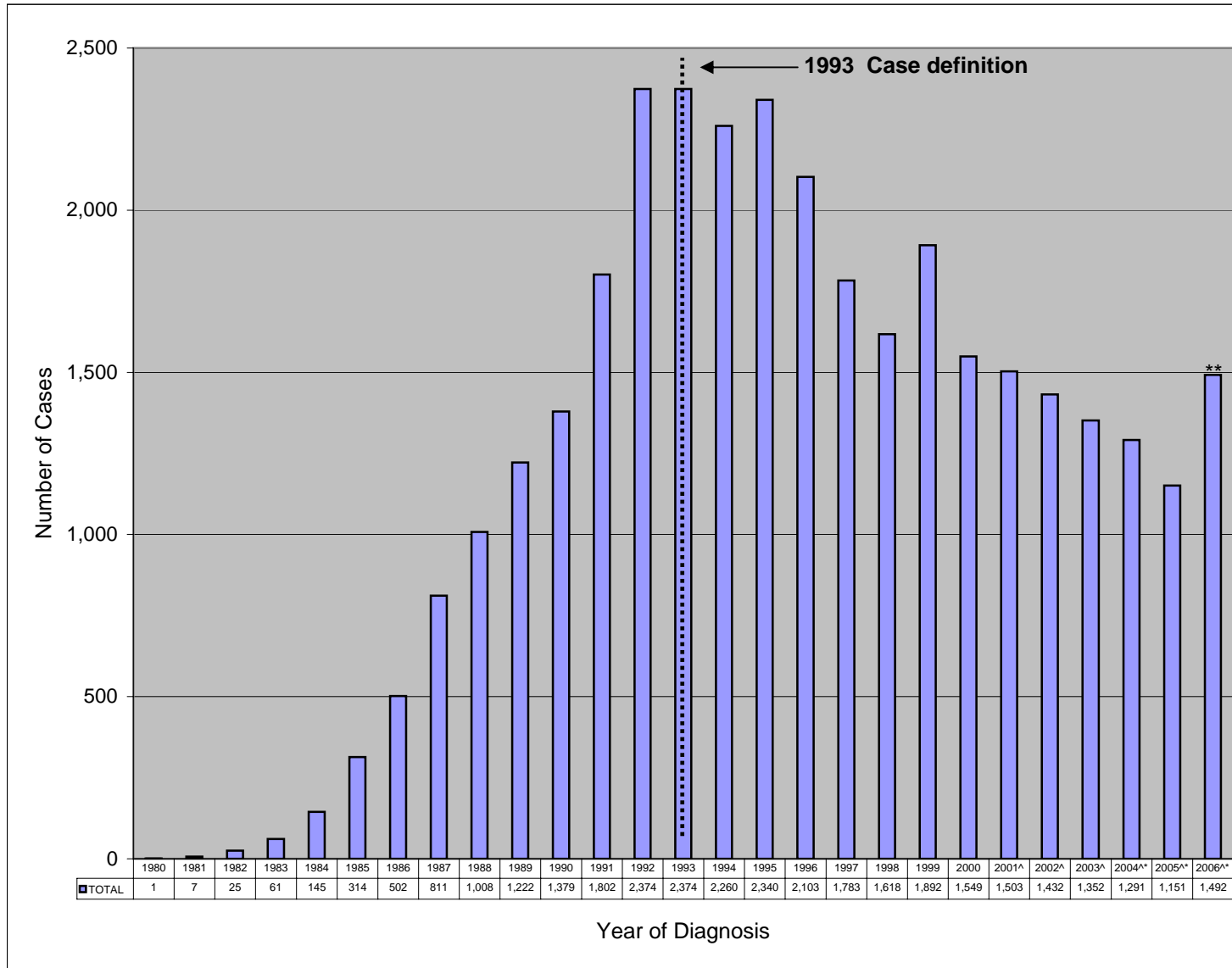
UNDUPLICATED HIV (NOT-AIDS) CASES & PERINATAL EXPOSURE, January 2000-December 2006			
	NUMBER OF CASES	NUMBER DEAD	PERCENT DEAD
TOTAL HIV(NOT AIDS)**	7,110	138	1.9
ADULT	7,025	137	2.0
PEDIATRIC	85	1	1.2
<hr/>			
PERINATAL EXPOSURE (HIV indeterminate)	541	9	1.7

*First diagnosis reported (meeting respective case definitions) during the period January, 1 2000 through December 31, 2006

**There were 4,488 cases diagnosed with HIV (without AIDS) before 2000.

The cumulative data presented in the table above are provided as a preview of progress in reporting processes and should not be used to infer the number of HIV cases in Pennsylvania due to incompleteness and reporting delays inherent in the early phases of surveillance system implementation. Moreover, these data do not include potential HIV (NOT AIDS) cases that do not have information or are missing information for any of the following specific variables: a) First positive result date, b) Current record status, c) Date of patient birth, d) Sex of patient, e) Patient's race, and f) State of residence when HIV+.

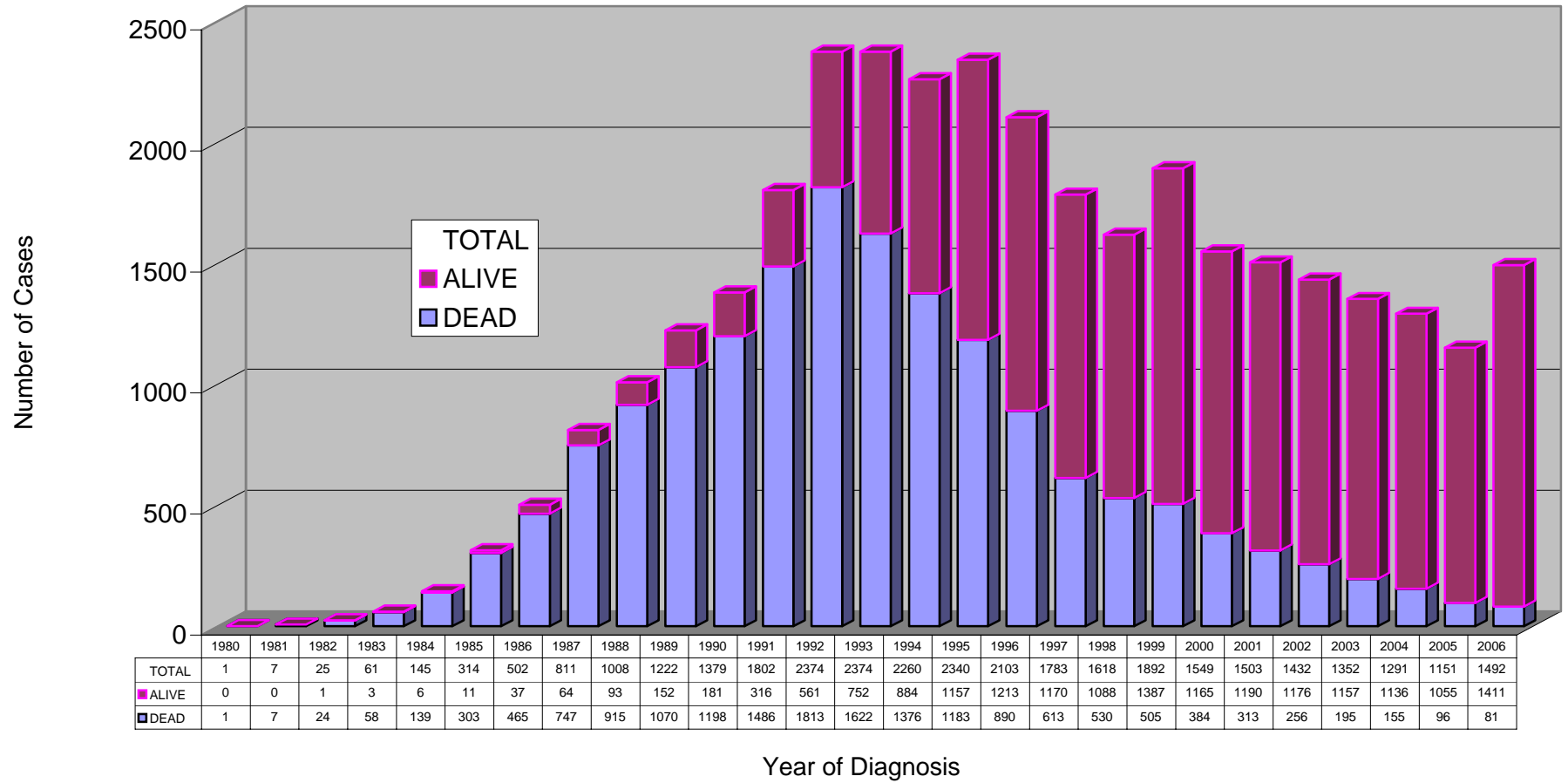
FIGURE 1
Annual Incidence for AIDS in Pennsylvania
1980-2006



[^] Decline in AIDS incidence may be due to decrease in AIDS diagnosis attributable to improved antiretroviral therapy and
^{*} partially due to reporting delays.

^{**} Increase in 2006 may partly reflect improvement attributable to Electronic Laboratory Reporting of low CD4 counts in PA-NEDSS.

Figure 2
Annual Incidence for AIDS in Pennsylvania
Current Mortality Status by Year of Diagnosis
1980-2006



Decline in AIDS incidence may be due to decrease in AIDS diagnosis attributable to improved antiretroviral therapy and partially due to reporting delays.

TABLE 1
 ANNUAL INCIDENCE FOR AIDS IN PENNSYLVANIA
 AMONG ADULT/ADOLESCENT AND PEDIATRIC CASES
 BY YEAR OF DIAGNOSIS, 1980-2006

YEAR OF DIAGNOSIS	ADULT/ADOLESCENT	PEDIATRIC	TOTAL
1980	1	0	1
1981	6	1	7
1982	23	2	25
1983	59	2	61
1984	143	2	145
1985	307	7	314
1986	494	8	502
1987	798	13	811
1988	993	15	1,008
1989	1,199	23	1,222
1990	1,358	21	1,379
1991	1,783	19	1,802
1992	2,334	40	2,374
1993	2,331	43	2,374
1994	2,235	25	2,260
1995	2,308	32	2,340
1996	2,078	25	2,103
1997	1,762	21	1,783
1998	1,602	16	1,618
1999	1,875	17	1,892
2000	1,540	9	1,549
2001^	1,498	5	1,503
2002^	1,425	7	1,432
2003^	1,350	2	1,352
2004^*	1,288	3	1,291
2005^*	1,148	3	1,151
2006**	1,491	1	1,492
Total	33,429	362	33,791

^Decline in AIDS incidence may be due to decrease in AIDS diagnosis attributable to improved antiretroviral therapy and

*partially due to reporting delays.

**Increase in 2006 may partly reflect improvement attributable to Electronic Laboratory Reporting of low CD4 counts in PA-NEDSS.

TABLE 2
ANNUAL INCIDENCE FOR AIDS IN PENNSYLVANIA
SEX AND RACE/ETHNICITY BY YEAR OF DIAGNOSIS
2001-2006

	2001		2002 [^]		2003 ^{^*}		2004 ^{^*}		2005 ^{^*}		2006 ^{^*}		1980-2006 TOTAL TO DATE	
	number	percent	number	percent	number	percent	number	percent	number	percent	number	percent	number	percent
TOTAL MALE	1,076	72	999	70	951	70	907	70	829	72	1,052	71	26,482	78
WHITE (NON-HISPANIC)	343	23	326	23	295	22	274	21	283	25	361	24	10,587	31
BLACK (NON-HISPANIC)	598	40	533	37	520	38	502	39	431	37	508	34	12,742	38
HISPANIC	118	8	117	8	114	8	113	9	99	9	140	9	2,870	8
ASIAN/PACIFIC	4	0	7	0	10	1	3	0	7	1	9	1	104	0
NATIVE AMERICAN	1	0	0	0	1	0	2	0	0	0	0	0	12	0
MULTIPLE RACE	12	1	16	1	11	1	13	1	9	1	34	2	167	0
TOTAL FEMALE	427	28	433	30	401	30	384	30	322	28	440	29	7,309	22
WHITE (NON-HISPANIC)	90	6	90	6	69	5	88	7	50	4	99	7	1,647	5
BLACK (NON-HISPANIC)	281	19	285	20	278	21	238	18	225	20	260	17	4,501	13
HISPANIC	51	3	51	4	47	3	50	4	41	4	74	5	1,076	3
ASIAN/PACIFIC	2	0	1	0	1	0	0	0	1	0	1	0	21	0
NATIVE AMERICAN	0	0	0	0	2	0	1	0	0	0	0	0	7	0
MULTIPLE RACE	3	0	6	0	4	0	7	1	5	0	6	0	57	0
TOTAL	1,503	100	1,432	100	1,352	100	1,291	100	1,151	100	1,492	100	33,791	100

[^]Decline in AIDS incidence may be due to decrease in AIDS diagnosis attributable to improved antiretroviral therapy and

*partially due to reporting delays.

Note: Percentages may not add to 100% due to 'rounding' .

TABLE 3
ADULT/ADOLESCENT AND PEDIATRIC AIDS IN PENNSYLVANIA
RACE/ETHNICITY BY SEX
1980-2000 and 2001-2006

	1980-2000		2001-2006 [^]		1980-2006 TOTAL TO DATE	
	number	percent	number	percent	number	percent
MALE						
TOTAL	20,668		5,814		26,482	
TOTAL ADULT/ADOLESENT	20,474	100	5,805	100	26,279	100
WHITE (NON-HISPANIC)	8,665	42	1,881	32	10,546	40
BLACK (NON-HISPANIC)	9,541	47	3,084	53	12,625	48
HISPANIC	2,126	10	701	12	2,827	11
ASIAN/PACIFIC	62	0	40	1	102	0
NATIVE AMERICAN	8	0	4	0	12	0
MULTIPLE RACE	72	0	95	2	167	1
TOTAL PEDIATRIC	194	100	9	100	203	100
WHITE (NON-HISPANIC)	40	21	1	11	41	20
BLACK (NON-HISPANIC)	109	56	8	89	117	58
HISPANIC	43	22	0	0	43	21
ASIAN/PACIFIC	2	1	0	0	2	1
NATIVE AMERICAN	0	0	0	0	0	0
MULTIPLE RACE	0	0	0	0	0	0

FEMALE						
TOTAL	4,902		2,407		7,309	
TOTAL ADULT/ADOLESENT	4,755	100	2,395	100	7,150	100
WHITE (NON-HISPANIC)	1,139	24	480	20	1,619	23
BLACK (NON-HISPANIC)	2,831	60	1,561	65	4,392	61
HISPANIC	743	16	314	13	1,057	15
ASIAN/PACIFIC	14	0	6	0	20	0
NATIVE AMERICAN	3	0	3	0	6	0
MULTIPLE RACE	25	1	31	1	56	1
TOTAL PEDIATRIC	147	100	12	100	159	100
WHITE (NON-HISPANIC)	22	15	6	50	28	18
BLACK (NON-HISPANIC)	103	70	6	50	109	69
HISPANIC	19	13	0	0	19	12
ASIAN/PACIFIC	1	1	0	0	1	1
NATIVE AMERICAN	1	1	0	0	1	1
MULTIPLE RACE	1	1	0	0	1	1

BOTH SEXES						
TOTAL	25,570		8,221		33,791	
TOTAL ADULT/ADOLESENT	25,229	100	8,200	100	33,429	100
WHITE (NON-HISPANIC)	9,804	39	2,361	29	12,165	36
BLACK (NON-HISPANIC)	12,372	49	4,645	57	17,017	51
HISPANIC	2,869	11	1,015	12	3,884	12
ASIAN/PACIFIC	76	0	46	1	122	0
NATIVE AMERICAN	11	0	7	0	18	0
MULTIPLE RACE	97	0	126	2	223	1
TOTAL PEDIATRIC	341	100	21	100	362	100
WHITE (NON-HISPANIC)	62	18	7	33	69	19
BLACK (NON-HISPANIC)	212	62	14	67	226	62
HISPANIC	62	18	0	0	62	17
ASIAN/PACIFIC	3	1	0	0	3	1
NATIVE AMERICAN	1	0	0	0	1	0
MULTIPLE RACE	1	0	0	0	1	0

[^] The more recent pattern, 2000-2006 is a better reflection of current distribution of cases than the earlier, 1980-1999 or the total to date, 1980-2006.

Note: Percentages may not add to 100% due to 'rounding'.

TABLE 4
ANNUAL INCIDENCE FOR AIDS IN PENNSYLVANIA
AGE BY YEAR OF DIAGNOSIS
2001-2006

	2001		2002		2003		2004		2005		2006		1980-2006 TOTAL TO DATE	
	number	percent	number	percent	number	percent	number	percent	number	percent	number	percent	number	percent
ALL AGES	1,503	100	1,432	100	1,352	100	1,291	100	1,151	100	1,492	100	33,791	100
0-12	5	0	7	0	2	0	3	0	3	0	1	0	362	1
13-19	14	1	13	1	17	1	16	1	21	2	17	1	260	1
20-29	160	11	140	10	158	12	159	12	126	11	159	11	5,205	15
30-39	549	37	524	37	462	34	374	29	302	26	412	28	13,657	40
40-49	514	34	500	35	453	34	463	36	471	41	544	36	9,840	29
OVER 49	261	17	248	17	260	19	276	21	228	20	359	24	4,467	13

NOTE: 1. Decline in AIDS incidence may be due to decrease in AIDS diagnosis attributable to improved antiretroviral therapy and partially due to reporting delays.

2. Percentages may not add to 100% due to 'rounding'.

TABLE 5
ANNUAL INCIDENCE FOR AIDS IN PENNSYLVANIA
MODE OF TRANSMISSION BY YEAR OF DIAGNOSIS
2001-2006

	2001		2002		2003		2004		2005		2006		1980-2006 TOTAL TO DATE	
	number	percent	number	percent	number	percent	number	percent	number	percent	number	percent	number	percent
ALL MODES	1,503	100	1,432	100	1,352	100	1,291	100	1,151	100	1,492	100	33,791	100
MEN SEX W/MEN (MSM)	405	27	356	25	360	27	374	29	332	29	440	29	12,941	38
INJECTING DRUG USE (IDU)	481	32	435	30	375	28	324	25	270	23	345	23	10,798	32
MSM & IDU	56	4	48	3	37	3	32	2	27	2	47	3	1,754	5
COAGULATION DISORDER	2	0	1	0	3	0	5	0	1	0	2	0	245	1
HETEROSEXUAL CONTACT	470	31	483	34	453	34	439	34	411	36	524	35	6,107	18
TRANSFUSION RECEIVED	3	0	2	0	5	0	3	0	2	0	1	0	278	1
UNDETERMINED/OTHER**	80	5	98	7	116	9	108	8	103	9	129	9	1,267	4
ALL PEDIATRIC MODES*	6	0	9	1	3	0	6	0	5	0	4	0	401	1

NOTE: Decline in AIDS incidence may be due to decrease in AIDS diagnosis attributable to improved antiretroviral therapy and partially due to reporting delays.

*There are 39 adults cases which are assigned pediatric modes since infection is believed to have occurred before age 13.

**1265 Cases remain under investigation; 2 are confirmed occupational exposure.

Note: Percentages may not add to 100% due to 'rounding' .

**TABLE 6
AIDS IN PENNSYLVANIA
MODE OF TRANSMISSION BY RACE/ETHNICITY
1980-2000 AND 2001-2006**

	WHITE NON-HISPANIC		BLACK NON-HISPANIC		HISPANIC		ASIAN/PACIFIC		NATIVE AMERICAN		MULTIPLE RACE		ALL RACES	
	number	percent	number	percent	number	percent	number	percent	number	percent	number	percent	number	percent
1980-2000														
ALL MODES	9,866	100	12,584	100	2,931	100	79	100	12	100	98	100	25,570	100
MEN SEX W/MEN (MSM)	6,218	63	3,949	31	420	14	41	52	7	58	39	40	10,674	42
INJECTING DRUG USE (IDU)	1,710	17	5,158	41	1,658	57	8	10	4	33	30	31	8,568	34
MSM & IDU	506	5	840	7	154	5	1	1	0	0	6	6	1,507	6
COAGULATION DISORDER	212	2	13	0	5	0	0	0	0	0	1	1	231	1
HETEROSEXUAL CONTACT	726	7	2,028	16	541	18	15	19	0	0	17	17	3,327	13
TRANSFUSION RECEIVED	188	2	59	0	9	0	6	8	0	0	0	0	262	1
UNDETERMINED/OTHER**	221	2	322	3	81	3	5	6	0	0	4	4	633	2
ALL PEDIATRIC MODES***	85	1	215	2	63	2	3	4	1	8	1	1	368	1

** 631 cases remain under investigation; 2 are confirmed occupational exposure.
 *** There are 27 adult cases which are assigned pediatric modes since infection is believed to have occurred before age 13.

2001-2006[^]														
	number	percent	number	percent	number	percent	number	percent	number	percent	number	percent	number	percent
ALL MODES	2,368	100	4,659	100	1,015	100	46	100	7	100	126	100	8,221	100
MEN SEX W/MEN (MSM)	1,119	47	963	21	129	13	15	33	2	29	39	31	2,267	28
INJECTING DRUG USE (IDU)	455	19	1,358	29	370	36	7	15	1	14	39	31	2,230	27
MSM & IDU	76	3	140	3	27	3	0	0	0	0	4	3	247	3
COAGULATION DISORDER	9	0	1	0	4	0	0	0	0	0	0	0	14	0
HETEROSEXUAL CONTACT	456	19	1,917	41	349	34	22	48	4	57	32	25	2,780	34
TRANSFUSION RECEIVED	9	0	6	0	1	0	0	0	0	0	0	0	16	0
UNDETERMINED	233	10	254	5	133	13	2	4	0	0	12	10	634	8
ALL PEDIATRIC MODES***	11	0	20	0	2	0	0	0	0	0	0	0	33	0

*** There are 12 adult cases which are assigned pediatric modes since infection is believed to have occurred before age 13.

[^]The more recent pattern, 2001-2006 is a better reflection of current distribution than the earlier, 1980-2000.

Percentages may not add to 100% due to rounding.

TABLE 7A
AIDS IN PENNSYLVANIA
CASES INFECTED BEFORE AGE 13* BY MODE OF TRANSMISSION
1980-2000 AND 2001-2006

MODE OF TRANSMISSION	1980-2000		2001-2006 [^]		TOTAL TO DATE 1980-2006	
	number	percent	number	percent	number	percent
ALL PEDIATRIC MODES	368	100	33	100	401	100
COAGULATION DISORDER	26	7	0	0	26	6
MOTHER WITH HIV	318	86	28	85	346	86
(Mother's Mode)						
INJECT DRUGS(IDU)	128	35	6	18	134	33
SEX W/IDU	66	18	9	27	75	19
SEX W/BISEXUAL	10	3	0	0	10	2
SEX W/COAGULATION DIS	5	1	0	0	5	1
SEX W/TRANSFUSION REC	2	1	0	0	2	0
SEX W/HIV INFECTED	53	14	9	27	62	15
TRANSFUSION REC	3	1	0	0	3	1
HIV (NO MODE SPEC)	51	14	4	12	55	14
TRANSFUSION RECEIVED	9	2	1	3	10	2
UNDETERMINED/OTHER	15	4	4	12	19	5

* Includes 39 cases which were diagnosed with AIDS when 13 or older.

[^]The more recent pattern, 2001-2006 is a better reflection of current distribution than the earlier, 1980-2000, or the total to date, 1980-2006.

Percentages may not add to 100% due to rounding.

TABLE 7B
HIV (NON-AIDS) IN PENNSYLVANIA
CASES INFECTED BEFORE AGE 13 BY MODE OF TRANSMISSION
2002-2006

		2002-2006		TOTAL TO DATE*	
MODE OF TRANSMISSION		number	percent	number	percent
ALL PEDIATRIC MODES		59	100	233	100
COAGULATION DISORDER		0	0	5	2
MOTHER WITH HIV		56	95	209	90
	(Mother's Mode)				
	INJECT DRUGS(IDU)	16	27	81	35
	SEX W/IDU	5	8	21	9
	SEX W/BISEXUAL	0	0	2	1
	SEX W/COAGULATION DIS	0	0	0	0
	SEX W/TRANSFUSION REC	0	0	0	0
	SEX W/HIV INFECTED	30	51	75	32
	TRANSFUSION REC	0	0	0	0
	HIV (NO MODE SPEC)	5	8	30	13
TRANSFUSION RECEIVED		1	2	2	1
UNDETERMINED/OTHER		2	3	17	7

Note: Percentages may not add up to 100% due to rounding.

*Includes cases diagnosed before 2002 and cumulative through December 31, 2006.

TABLE 8
AIDS IN PENNSYLVANIA
AIDS DEFINING ILLNESSES BY TIME INTERVAL OF DIAGNOSIS
1980-2000 AND 2001-2006

	CONDITION PRESENTING AT AIDS DIAGNOSIS	1980-2000		2001-2006 [^]		TOTAL TO DATE	
		number	percent	number	percent	number	percent
MALES	Immunological	10,086	49%	4,818	83%	14,904	56%
	Pneumocystis Carinii Pneumonia	5,099	25%	585	10%	5,684	21%
	Wasting Syndrome	2,510	12%	460	8%	2,970	11%
	Candidiasis Esophagus	2,031	10%	251	4%	2,282	9%
	Chronic Mucocutaneous Herpes Simplex	982	5%	159	3%	1,141	4%
	Kaposi's Sarcoma	983	5%	64	1%	1,047	4%
	Cryptococcosis	702	3%	72	1%	774	3%
	HIV Encephalopathy	687	3%	65	1%	752	3%
	Cytomegalovirus Disease	583	3%	59	1%	642	2%
	All Other Diagnoses	3,820	18%	435	7%	4,255	16%
FEMALES	Immunological	2,685	55%	1,938	81%	4,623	63%
	Pneumocystis Carinii Pneumonia	852	17%	224	9%	1,076	15%
	Wasting Syndrome	559	11%	173	7%	732	10%
	Candidiasis Esophagus	489	10%	125	5%	614	8%
	Chronic Mucocutaneous Herpes Simplex	367	7%	118	5%	485	7%
	Pneumonia, Recurrent	224	5%	52	2%	276	4%
	HIV Encephalopathy	117	2%	15	1%	132	2%
	Cytomegalovirus Disease	109	2%	22	1%	131	2%
	Mycobacterium Avian Complex	109	2%	20	1%	129	2%
	All Other Diagnoses	667	14%	152	6%	819	11%
BOTH SEXES	Immunological	12,771	50%	6,756	82%	19,527	58%
	Pneumocystis Carinii Pneumonia	5,951	23%	809	10%	6,760	20%
	Wasting Syndrome	3,069	12%	633	8%	3,702	11%
	Candidiasis Esophagus	2,520	10%	376	5%	2,896	9%
	Chronic Mucocutaneous Herpes Simplex	1,349	5%	277	3%	1,626	5%
	Kaposi's Sarcoma	1,003	4%	70	1%	1,073	3%
	HIV Encephalopathy	804	3%	80	1%	884	3%
	Pneumonia, Recurrent	727	3%	148	2%	875	3%
	Cryptococcosis	773	3%	90	1%	863	3%
	All Other Diagnoses	4,694	18%	568	7%	5,262	16%

Note: Only includes conditions found at the time of diagnosis of AIDS.

Percentages total more than 100 because one case may have several conditions diagnosed.

[^]The nine most common conditions among all males, among all females, and among all cases are listed.

[^] The more recent pattern, 2001-2006, is a better reflection of current distribution of cases than the earlier, 1980-2000, or the total to date, 1980-2006

[^]Decrease of all other presentations in 2001-2006 may be attributable to earlier diagnosis, prophylactic treatment, potent antiretroviral therapy and changes in the population progressing to AIDS stage.

TABLE 9A
 CUMULATIVE CASES FOR AIDS IN PENNSYLVANIA
 MORTALITY STATUS BY COUNTY OF RESIDENCE
 1980-2006

COUNTY	PRESUMED ALIVE	REPORTED DEAD	CUMULATIVE CASES	COUNTY	PRESUMED ALIVE	REPORTED DEAD	CUMULATIVE CASES
PHILADELPHIA	9,917	8,986	18,903	CLEARFIELD	42	21	63
ALLEGHENY	1,103	1,412	2,515	BUTLER	26	35	61
DELAWARE	660	772	1,432	LAWRENCE	26	32	58
MONTGOMERY	452	514	966	PIKE	32	26	58
DAUPHIN	451	437	888	CRAWFORD	23	31	54
BERKS	471	373	844	ARMSTRONG	19	22	41
LEHIGH	475	304	779	COLUMBIA	22	16	38
LANCASTER	396	372	768	CARBON	22	15	37
BUCKS	324	395	719	INDIANA	17	18	35
YORK	369	294	663	MCKEAN	17	17	34
CHESTER	234	304	538	BRADFORD	14	18	32
NORTHAMPTON	205	198	403	VENANGO	10	22	32
CUMBERLAND	210	124	334	GREENE	17	14	31
LUZERNE	145	159	304	PERRY	16	13	29
ERIE	151	145	296	TIOGA	7	15	22
LYCOMING	151	119	270	SUSQUEHANNA	11	10	21
LACKAWANNA	124	115	239	WARREN	13	8	21
MONROE	112	110	222	WYOMING	9	12	21
WESTMORELAND	85	137	222	BEDFORD	11	9	20
LEBANON	72	64	136	SNYDER	11	9	20
SCHUYLKILL	82	53	135	MIFFLIN	7	12	19
BEAVER	64	68	132	JEFFERSON	6	9	15
CAMBRIA	70	58	128	MONTOUR	7	8	15
WASHINGTON	57	70	127	CLARION	6	4	10
FRANKLIN	62	50	112	CLINTON	3	7	10
CENTRE	64	47	111	JUNIATA	5	4	9
NORTHUMBERLAND	59	44	103	POTTER	3	5	8
UNION	75	25	100	ELK	3	4	7
WAYNE	53	47	100	SULLIVAN	3	3	6
BLAIR	45	44	89	FOREST	3	1	4
HUNTINGDON	57	26	83	FULTON	3	0	3
SOMERSET	50	30	80	CAMERON	0	0	0
MERCER	41	37	78				
FAYETTE	36	37	73				
ADAMS	30	35	65				
				STATE TOTAL	17,366	16,425	33,791

TABLE 9B
 CUMULATIVE CASES FOR HIV (NON-aids) IN PENNSYLVANIA*
 MORTALITY STATUS BY COUNTY OF RESIDENCE

COUNTY	PRESUMED ALIVE	REPORTED DEAD	CUMULATIVE CASES
PHILADELPHIA	5,609	111	5,720
ALLEGHENY	935	38	973
DELAWARE	516	35	551
DAUPHIN	377	14	391
MONTGOMERY	366	13	379
BERKS	354	21	375
LANCASTER	310	9	319
LEHIGH	304	9	313
YORK	252	9	261
BUCKS	222	4	226
CHESTER	186	10	196
NORTHAMPTON	182	6	188
CUMBERLAND	173	2	175
LUZERNE	137	5	142
ERIE	122	2	124
LACKAWANNA	97	6	103
LYCOMING	99	0	99
MONROE	92	5	97
CAMBRIA	54	1	55
CENTRE	49	1	50
WASHINGTON	49	1	50
FRANKLIN	47	2	49
WESTMORELAND	48	0	48
UNION	46	0	46
LEBANON	44	1	45
SCHUYLKILL	39	3	42
BLAIR	30	5	35
BEAVER	30	2	32
CRAWFORD	30	2	32
SOMERSET	29	2	31
WAYNE	28	0	28
HUNTINGDON	26	1	27
BUTLER	26	0	26
MERCER	26	0	26
NORTHUMBERLAND	26	0	26

COUNTY	PRESUMED ALIVE	REPORTED DEAD	CUMULATIVE CASES
PIKE	23	3	26
CLEARFIELD	24	1	25
FAYETTE	22	1	23
COLUMBIA	18	1	19
CARBON	18	0	18
INDIANA	18	0	18
ADAMS	16	1	17
BRADFORD	15	0	15
PERRY	15	0	15
GREENE	12	1	13
TIOGA	10	1	11
BEDFORD	9	1	10
LAWRENCE	10	0	10
SUSQUEHANNA	10	0	10
WARREN	9	1	10
FOREST	8	0	8
JEFFERSON	8	0	8
VENANGO	8	0	8
ARMSTRONG	6	1	7
MCKEAN	7	0	7
MIFFLIN	6	1	7
JUNIATA	6	0	6
MONTOUR	5	1	6
SNYDER	5	0	5
WYOMING	5	0	5
CLINTON	2	1	3
CLARION	2	0	2
ELK	2	0	2
SULLIVAN	2	0	2
FULTON	1	0	1
POTTER	1	0	1
CAMERON	0	0	0
STATE TOTAL	11,263	335	11,598

*Includes only persons with HIV infection that has not progressed to AIDS.

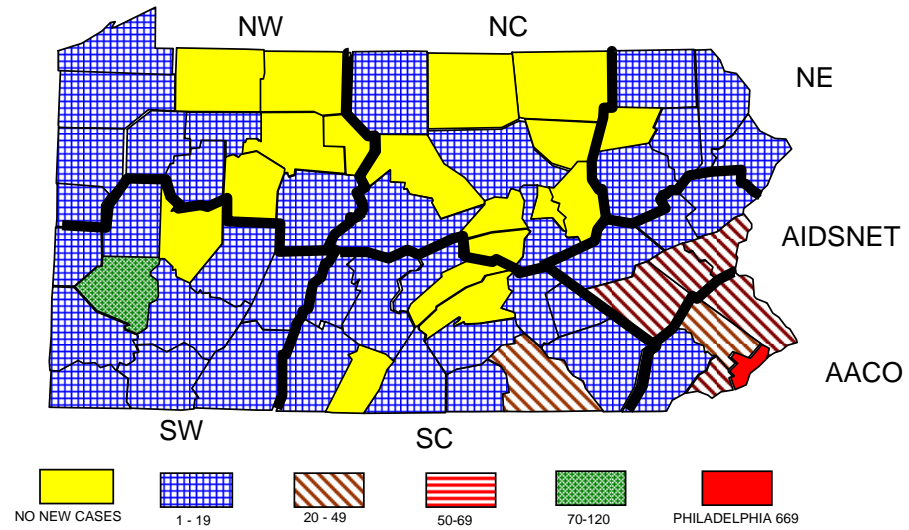
TABLE 10
ANNUAL INCIDENCE FOR AIDS IN PENNSYLVANIA
BY COUNTY OF RESIDENCE
2001-2006

COUNTY	2001 [^]	2002 [^]	2003 [^]	2004 ^{**}	2005 ^{**}	2006 ^{**}	2005 INCIDENCE PER 100,000 ^{**}
ADAMS	6	3	1	1	1	6	1.00
ALLEGHENY	108	109	91	91	85	69	6.88
ARMSTRONG	2	3	1	1	0	3	0.00
BEAVER	7	6	3	7	7	5	3.95
BEDFORD	1	1	1	0	1	2	2.00
BERKS	34	35	32	25	20	45	5.05
BLAIR	5	3	3	7	2	8	1.58
BRADFORD	1	0	0	1	0	2	0.00
BUCKS	19	11	16	19	27	36	4.35
BUTLER	4	2	1	1	4	3	2.20
CAMBRIA	3	4	5	3	5	4	3.38
CAMERON	0	0	0	0	0	0	0.00
CARBON	2	0	3	2	3	3	4.84
CENTRE	5	2	3	0	4	10	2.85
CHESTER	27	20	20	24	14	18	2.95
CLARION	0	1	0	0	1	1	2.46
CLEARFIELD	7	3	2	2	3	1	3.62
CLINTON	0	0	0	1	0	2	0.00
COLUMBIA	2	1	1	1	0	1	0.00
CRAWFORD	3	3	2	1	1	1	1.12
CUMBERLAND	13	20	11	7	18	18	8.07
DAUPHIN	42	23	22	22	11	47	4.33
DELAWARE	65	36	49	58	37	98	6.66
ELK	0	0	1	0	0	0	0.00
ERIE	11	14	7	10	15	9	5.35
FAYETTE	2	2	1	2	5	8	3.42
FOREST	0	0	0	0	1	2	17.42
FRANKLIN	2	1	5	5	7	4	5.09
FULTON	0	0	0	0	0	1	0.00
GREENE	3	0	0	0	2	3	5.02
HUNTINGDON	6	2	1	1	3	9	6.53
INDIANA	0	1	4	0	2	1	2.25
JEFFERSON	1	0	0	0	0	2	0.00
JUNIATA	0	1	0	1	0	0	0.00
LACKAWANNA	9	8	6	9	8	12	3.82

COUNTY	2001 [^]	2002 ^{**}	2003 ^{**}	2004 ^{**}	2005 ^{**}	2006 ^{**}	2005 INCIDENCE PER 100,000 ^{**}
LANCASTER	34	25	28	19	18	32	3.67
LAWRENCE	1	4	1	1	1	4	1.08
LEBANON	9	3	2	2	2	10	1.59
LEHIGH	32	27	33	31	26	50	7.87
LUZERNE	10	14	11	6	10	23	3.20
LYCOMING	14	6	7	6	10	14	8.45
MCKEAN	0	3	1	1	0	2	0.00
MERCER	1	0	6	5	2	7	1.67
MIFFLIN	1	0	0	0	1	0	2.16
MONROE	8	13	12	9	6	17	3.68
MONTGOMERY	31	26	30	41	40	58	5.16
MONTOUR	0	1	1	0	0	0	0.00
NORTHAMPTON	11	19	15	12	21	25	7.30
NORTHUMBERLAND	4	4	1	3	3	11	3.24
PERRY	1	1	1	1	0	3	0.00
PHILADELPHIA	887	902	861	795	669	703	45.72
PIKE	5	4	0	3	2	3	3.55
POTTER	0	0	0	0	1	0	5.61
SCHUYLKILL	3	8	2	3	3	12	2.03
SNYDER	3	1	0	0	0	2	0.00
SOMERSET	3	2	1	4	3	5	3.80
SULLIVAN	0	0	0	0	0	0	0.00
SUSQUEHANNA	1	0	2	1	1	2	2.37
TIOGA	0	1	0	1	0	2	0.00
UNION	5	6	8	3	0	3	0.00
VENANGO	0	1	0	0	1	2	1.79
WARREN	0	0	3	4	0	2	0.00
WASHINGTON	5	4	3	2	6	7	2.91
WAYNE	3	1	2	2	7	5	13.97
WESTMORELAND	10	8	3	8	6	6	1.63
WYOMING	2	0	1	0	0	0	0.00
YORK	29	33	25	26	25	48	6.12
STATE TOTAL	1,503	1,432	1,352	1,291	1,151	1,492	9.26

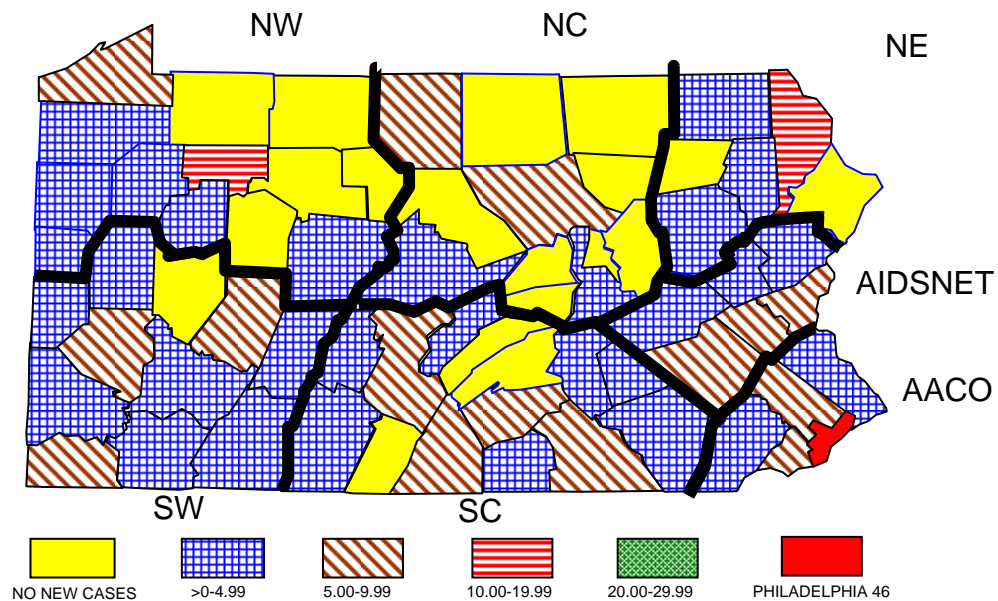
[^]Decline in AIDS incidence may be due to decrease in AIDS diagnosis attributable to improved antiretroviral therapy and partially due to reporting delays.
^{**}Rates based on estimated 2005 population.

FIGURE 3
 ANNUAL INCIDENCE FOR AIDS IN PENNSYLVANIA
 NUMBER OF NEW CASES BY COUNTY
 2005



AACO=AIDS Activities Coordinating Office
 AIDSNET = AIDSNET
 NE = Northeastern Regional AIDS Planning Coalition
 NC = North Central District AIDS Coalition
 SC = South Central Pennsylvania AIDS Planning Coalition
 SW = Southwest Pennsylvania AIDS Planning Coalition
 NW = Northwest Pennsylvania Rural AIDS Alliance

FIGURE 4
 ANNUAL INCIDENCE FOR AIDS IN PENNSYLVANIA
 INCIDENCE RATE* (PER 100,000) BY COUNTY
 2005



AACO=AIDS Activities Coordinating Office
 AIDSNET = AIDSNET
 NE = Northeastern Regional AIDS Planning Coalition
 NC = North Central District AIDS Coalition
 SC = South Central Pennsylvania AIDS Planning Coalition
 SW = Southwest Pennsylvania AIDS Planning Coalition
 NW = Northwest Pennsylvania Rural AIDS Alliance

* Incidence rates based on estimated 2005 population.

TABLE 11A
AIDS IN PENNSYLVANIA
CHARACTERISTICS OF CASES BY TIME INTERVAL OF DIAGNOSIS
1980-2006

		1980-2000		2001-2006 [^]		TOTAL TO DATE 1980-2006		PRESUMED LIVING	
		number	percent	number	percent	number	percent	number	percent
	TOTAL	25,570	100%	8,221	100%	33,791	100%	17,366	100%
SEX	MALE	20,668	81%	5,814	71%	26,482	78%	12,828	74%
	FEMALE	4,902	19%	2,407	29%	7,309	22%	4,538	26%
RACE/ETHNIC	WHITE(NON-HISP)	9,866	39%	2,368	29%	12,234	36%	5,549	32%
	BLACK(NON-HISP)	12,584	49%	4,659	57%	17,243	51%	9,165	53%
	HISPANIC	2,931	11%	1,015	12%	3,946	12%	2,382	14%
	ASIAN/PACIFIC	79	0%	46	1%	125	0%	83	0%
	NATIVE AMERICAN	12	0%	7	0%	19	0%	9	0%
	MULTIPLE RACE	98	0%	126	2%	224	1%	178	1%
AGE (YEARS)	0-12 (PEDIATRIC)	341	1%	21	0%	362	1%	209	1%
	13-19	162	1%	98	1%	260	1%	182	1%
	20-29	4,303	17%	902	11%	5,205	15%	2,702	16%
	30-39	11,034	43%	2,623	32%	13,657	40%	6,944	40%
	40-49	6,895	27%	2,945	36%	9,840	29%	5,239	30%
	OVER 49	2,835	11%	1,632	20%	4,467	13%	2,090	12%
MODE OF TRANS	MEN SEX W/MEN (MSM)	10,674	42%	2,267	28%	12,941	38%	5,596	32%
	INJECTING DRUG(IDU)	8,568	34%	2,230	27%	10,798	32%	5,543	32%
	MSM & IDU	1,507	6%	247	3%	1,754	5%	770	4%
	COAGULATION DIS	231	1%	14	0%	245	1%	68	0%
	HETEROSEXUAL CONTACT	3,327	13%	2,780	34%	6,107	18%	4,235	24%
	TRANSFUSION	262	1%	16	0%	278	1%	51	0%
	UNDETERMINED/OTHER	633	2%	634	8%	1,267	4%	866	5%
	ALL PEDIATRIC***	368	1%	33	0%	401	1%	237	1%
AIDS DEFINING ILLNESSES* PRESENTING AT AIDS DIAGNOSIS	Immunological	12,771	50%	6,756	82%	19,527	58%	12,605	73%
	Pneumocystis Carinii Pneumonia	5,951	23%	809	10%	6,760	20%	1,979	11%
	Wasting Syndrome	3,069	12%	633	8%	3,702	11%	1,289	7%
	Candidiasis Esophagus	2,520	10%	376	5%	2,896	9%	982	6%
	Chronic Mucocutaneous Herpes Simplex	1,349	5%	277	3%	1,626	5%	875	5%
	Kaposi's Sarcoma	1,003	4%	70	1%	1,073	3%	262	2%
	HIV Encephalopathy	804	3%	80	1%	884	3%	167	1%
	Pneumonia, Recurrent	727	3%	148	2%	875	3%	458	3%
	Cryptococcosis	773	3%	90	1%	863	3%	205	1%
COALITION AREA	AIDS ACTIVITIES COORDINATING OFFICE (AAO)	16,921	66%	5,637	69%	22,558	67%	11,587	67%
	AIDSNET	1,818	7%	602	7%	2,420	7%	1,367	8%
	NORTHEASTERN REGIONAL HIV PLANNING COALITION	570	2%	173	2%	743	2%	374	2%
	NORTH CENTRAL DISTRICT AIDS COALITION	577	2%	158	2%	735	2%	419	2%
	SOUTH CENTRAL PENNSYLVANIA AIDS PLANNING COALITION	2,484	10%	734	9%	3,218	10%	1,734	10%
	SOUTHWEST PENNSYLVANIA AIDS PLANNING COALITION	2,686	11%	759	9%	3,445	10%	1,544	9%
	NORTHWEST PENNSYLVANIA RURAL AIDS ALLIANCE	514	2%	158	2%	672	2%	341	2%

* Only AIDS defining illnesses diagnosed at the same time as AIDS diagnosis are included.
Percentages total more than 100 because one case may have several conditions diagnosed.
The nine most common conditions among all cases are listed.

*** Includes adult cases which are assigned pediatric modes of transmission since infection is believed to have occurred before age 13

[^] The more recent pattern, 2001-2006 is a better reflection of current distribution of cases than the earlier, 1980-2000 or the total to date, 1980-2006.

Note: Percentages may not add to 100% due to rounding.

TABLE 11B
HIV (NON-AIDS) IN PENNSYLVANIA
CHARACTERISTICS OF CASES BY TIME INTERVAL OF DIAGNOSIS
2002-2006

		BEFORE 2002		2002		2003		2004		2005		2006		TOTAL TO DEC 31, 2006*		CURRENTLY LIVING DEC 31, 2006	
		number	percent	number	percent	number	percent	number	percent	number	percent	number	percent	number	percent	number	percent
	TOTAL CASES	5,764	100	924	100	1,025	100	1,069	100	1,155	100	1,661	100	11,598	100	11,263	100
SEX	MALE	3,854	67	595	64	663	65	708	66	768	66	1,120	67	7,708	66	7,470	66
	FEMALE	1,910	33	329	36	362	35	361	34	387	34	541	33	3,890	34	3,793	34
RACE/ETHNICITY	WHITE	2,109	37	297	32	374	36	319	30	338	29	590	36	4,027	35	3,887	35
	BLACK	2,741	48	486	53	493	48	565	53	637	55	793	48	5,715	49	5,566	49
	HISPANIC	791	14	125	14	131	13	144	13	155	13	222	13	1,568	14	1,528	14
	ASIAN/PACIFIC	24	0	2	0	9	1	9	1	7	1	11	1	62	1	61	1
	NATIVE_AMERICAN	7	0	1	0	1	0	5	0	0	0	5	0	19	0	19	0
	MULTIRACE	92	2	13	1	17	2	27	3	18	2	40	2	207	2	202	2
AGE (YEARS)	< 13	174	3	8	1	17	2	8	1	12	1	14	1	233	2	229	2
	13 - 19	216	4	25	3	37	4	46	4	70	6	72	4	466	4	464	4
	20 - 29	1,631	28	177	19	191	19	245	23	263	23	362	22	2,869	25	2,831	25
	30 - 39	2,246	39	339	37	336	33	342	32	323	28	432	26	4,018	35	3,926	35
	40 - 49	1,147	20	263	28	315	31	296	28	312	27	507	31	2,840	24	2,710	24
	Over 49	350	6	112	12	129	13	132	12	175	15	274	16	1,172	10	1,103	10
MODE OF TRANSMISSION	MSM	1,739	30	235	25	271	26	295	28	340	29	493	30	3,373	29	3,306	29
	IDU	1,676	29	232	25	199	19	200	19	203	18	336	20	2,846	25	2,691	24
	MSM_IDU	159	3	17	2	20	2	22	2	20	2	29	2	267	2	256	2
	COAGULATION_DISORDER	19	0	1	0	1	0	0	0	0	0	0	0	21	0	20	0
	HETEROSEXUAL	1,554	27	294	32	342	33	427	40	471	41	607	37	3,695	32	3,636	32
	TRANSFUSION	18	0	3	0	0	0	1	0	3	0	2	0	27	0	25	0
	UNDETERMINED_MODE	425	7	134	15	175	17	116	11	106	9	180	11	1,136	10	1,100	10
	PEDIATRIC	174	3	8	1	17	2	8	1	12	1	14	1	233	2	229	2
COALITION AREA	AACO	3,449	60	528	57	598	58	694	65	843	73	960	58	7,072	61	6,899	61
	AIDSNET	494	9	94	10	102	10	75	7	75	6	193	12	1,033	9	989	9
	NORTHEASTERN	127	2	22	2	57	6	23	2	22	2	63	4	314	3	300	3
	NORTH CENTRAL	115	2	32	3	33	3	34	3	8	1	61	4	283	2	278	2
	SOUTH CENTRAL	762	13	130	14	110	11	109	10	93	8	154	9	1,358	12	1,312	12
	SOUTHWEST	679	12	102	11	96	9	117	11	96	8	186	11	1,276	11	1,229	11
	NORTHWEST	138	2	16	2	29	3	17	2	18	2	44	3	262	2	256	2

Note: Percentages may not add to 100% due to 'rounding'.

Cumulative are cases diagnosed through December 31, 2006 and reported through June 30, 2007.

^Reflects year of first reported HIV diagnosis, which may not indicate first actual diagnosis for HIV infection.

* Includes cases diagnosed prior to 2002

TABLE 12A
AIDS IN PENNSYLVANIA
CHARACTERISTICS OF CASES BY TIME INTERVAL OF DIAGNOSIS
1980-2006

AIDS ACTIVITIES COORDINATING OFFICE
BUCKS, DELAWARE, CHESTER, MONTGOMERY, PHILADELPHIA COUNTIES

		1980-2000		2001-2006 [^]		TOTAL TO DATE 1980-2006		PRESUMED LIVING	
		number	percent	number	percent	number	percent	number	percent
	TOTAL	16,921	100%	5,637	100%	22,558	100%	11,587	100%
SEX	MALE	13,653	81%	3,929	70%	17,582	78%	8,478	73%
	FEMALE	3,268	19%	1,708	30%	4,976	22%	3,109	27%
RACE/ETHNIC	WHITE(NON-HISP)	4,967	29%	1,195	21%	6,162	27%	2,821	24%
	BLACK(NON-HISP)	10,277	61%	3,736	66%	14,013	62%	7,314	63%
	HISPANIC	1,550	9%	587	10%	2,137	9%	1,274	11%
	ASIAN/PACIFIC	54	0%	41	1%	95	0%	65	1%
	NATIVE AMERICAN	6	0%	5	0%	11	0%	6	0%
	MULTIPLE RACE	67	0%	73	1%	140	1%	107	1%
AGE (YEARS)	0-12 (PEDIATRIC)	239	1%	10	0%	249	1%	155	1%
	13-19	92	1%	84	1%	176	1%	131	1%
	20-29	2,862	17%	639	11%	3,501	16%	1,832	16%
	30-39	7,110	42%	1,753	31%	8,863	39%	4,519	39%
	40-49	4,635	27%	1,965	35%	6,600	29%	3,472	30%
	OVER 49	1,983	12%	1,186	21%	3,169	14%	1,478	13%
MODE OF TRANS	MEN SEX W/MEN (MSM)	6,902	41%	1,418	25%	8,320	37%	3,593	31%
	INJECTING DRUG(IDU)	5,924	35%	1,670	30%	7,594	34%	3,851	33%
	MSM & IDU	976	6%	164	3%	1,140	5%	496	4%
	COAGULATION DIS	55	0%	6	0%	61	0%	16	0%
	HETEROSEXUAL CONTACT	2,349	14%	2,207	39%	4,556	20%	3,197	28%
	TRANSFUSION	127	1%	5	0%	132	1%	18	0%
	UNDETERMINED/OTHER	342	2%	150	3%	492	2%	253	2%
	ALL PEDIATRIC***	246	1%	17	0%	263	1%	163	1%
AIDS DEFINING ILLNESSES* PRESENTING AT AIDS DIAGNOSIS	Immunological	8,160	48%	4,562	81%	12,722	56%	8,099	70%
	Pneumocystis Carinii Pneumonia	3,749	22%	564	10%	4,313	19%	1,260	11%
	Wasting Syndrome	2,025	12%	544	10%	2,569	11%	994	9%
	Candidiasis Esophagus	1,475	9%	208	4%	1,683	7%	583	5%
	Chronic Mucocutaneous Herpes Simplex	924	5%	244	4%	1,168	5%	704	6%
	Kaposi's Sarcoma	680	4%	40	1%	720	3%	182	2%
	HIV Encephalopathy	466	3%	58	1%	524	2%	102	1%
	Pneumonia, Recurrent	563	3%	109	2%	672	3%	353	3%
	Cryptococcosis	494	3%	50	1%	544	2%	107	1%
COUNTY	BUCKS	591	3%	128	2%	719	3%	324	3%
	CHESTER	415	2%	123	2%	538	2%	234	2%
	DELAWARE	1,089	6%	343	6%	1,432	6%	660	6%
	MONTGOMERY	740	4%	226	4%	966	4%	452	4%
	PHILADELPHIA	14,086	83%	4,817	85%	18,903	84%	9,917	86%

* Only AIDS defining illnesses diagnosed at the same time as AIDS diagnosis are included.

Percentages total more than 100 because one case may have several conditions diagnosed.

The nine most common conditions among all cases are listed.

*** Includes adult cases which are assigned pediatric modes of transmission since infection is believed to have occurred before age 13

[^] The more recent pattern, 2001-2006 is a better reflection of current distribution of cases than the earlier, 1980-2000 or the total to date, 1980-2006.

Note: Percentages may not add to 100% due to rounding.

TABLE 12B
HIV (NON-AIDS) IN PENNSYLVANIA
CHARACTERISTICS OF CASES BY TIME INTERVAL OF DIAGNOSIS

AIDS ACTIVITIES COORDINATING OFFICE
BUCKS, DELAWARE, CHESTER, MONTGOMERY, PHILADELPHIA COUNTIES

		BEFORE 2002		2002		2003		2004		2005		2006		TOTAL TO DEC 31, 2006		CURRENTLY LIVING DEC 31, 2006	
		number	percent	number	percent	number	percent	number	percent	number	percent	number	percent	number	percent	number	percent
	TOTAL CASES	3,449	100	528	100	598	100	694	100	843	100	960	100	7,072	100	6,899	100
SEX	MALE	2,253	65	325	62	373	62	444	64	550	65	636	66	4,581	65	4,456	65
	FEMALE	1,196	35	203	38	225	38	250	36	293	35	324	34	2,491	35	2,443	35
RACE/ETHNICITY	WHITE	948	27	113	21	164	27	133	19	187	22	222	23	1,767	25	1,710	25
	BLACK	2,058	60	349	66	352	59	449	65	530	63	603	63	4,341	61	4,241	61
	HISPANIC	376	11	55	10	65	11	78	11	110	13	109	11	793	11	780	11
	ASIAN/PACIFIC	9	0	2	0	5	1	4	1	5	1	9	1	34	0	33	0
	NATIVE_AMERICAN	3	0	1	0	1	0	5	1	0	0	5	1	15	0	15	0
	MULTIRACE	55	2	8	2	11	2	25	4	11	1	12	1	122	2	120	2
AGE (YEARS)	< 13	127	4	6	1	11	2	5	1	10	1	2	0	161	2	158	2
	13 - 19	129	4	19	4	27	5	30	4	55	7	46	5	306	4	304	4
	20 - 29	984	29	103	20	109	18	163	23	196	23	235	24	1,790	25	1,774	26
	30 - 39	1,305	38	193	37	202	34	227	33	222	26	240	25	2,389	34	2,346	34
	40 - 49	685	20	157	30	174	29	176	25	236	28	285	30	1,713	24	1,643	24
	Over 49	219	6	50	9	75	13	93	13	124	15	152	16	713	10	674	10
MODE OF TRANSMISSION	MSM	976	28	108	20	137	23	163	23	219	26	261	27	1,864	26	1,833	27
	IDU	1,079	31	160	30	127	21	144	21	170	20	219	23	1,899	27	1,813	26
	MSM_IDU	83	2	10	2	10	2	12	2	16	2	20	2	151	2	143	2
	COAGULATION_DISORDER	5	0	0	0	0	0	0	0	0	0	0	0	5	0	4	0
	HETEROSEXUAL	1,084	31	222	42	261	44	343	49	406	48	431	45	2,747	39	2,712	39
	TRANSFUSION	9	0	0	0	0	0	0	0	3	0	0	0	12	0	11	0
	UNDETERMINED_MODE	86	2	22	4	52	9	27	4	19	2	27	3	233	3	225	3
	PEDIATRIC	127	4	6	1	11	2	5	1	10	1	2	0	161	2	158	2
COUNTY	BUCKS	103	3	10	2	27	5	24	3	24	3	38	4	226	3	222	3
	CHESTER	99	3	16	3	20	3	18	3	23	3	20	2	196	3	186	3
	DELAWARE	226	7	41	8	66	11	68	10	36	4	114	12	551	8	516	7
	MONTGOMERY	154	4	28	5	53	9	39	6	30	4	75	8	379	5	366	5
	PHILADELPHIA	2,867	83	433	82	432	72	545	79	730	87	713	74	5,720	81	5,609	81

Note: Percentages may not add to 100% due to 'rounding'.

Cummulative are cases diagnosed through December 31, 2006 and reported through June 30, 2007.

^Reflects year of first reported HIV diagnosis, which may not indicate first actual diagnosis for HIV infection.

* Includes cases diagnosed prior to 2002

TABLE 13A
AIDS IN PENNSYLVANIA
CHARACTERISTICS OF CASES BY TIME INTERVAL OF DIAGNOSIS
1980-2006

AIDSNET

BERKS, CARBON, LEHIGH, MONROE, NORTHAMPTON, SCHUYLKILL COUNTIES

		1980-2000		2001-2006 [^]		TOTAL TO DATE 1980-2006		PRESUMED LIVING	
		number	percent	number	percent	number	percent	number	percent
		TOTAL	1,818	100%	602	100%	2,420	100%	1,367
SEX	MALE	1,340	74%	398	66%	1,738	72%	935	68%
	FEMALE	478	26%	204	34%	682	28%	432	32%
RACE/ETHNIC	WHITE(NON-HISP)	810	45%	195	32%	1,005	42%	457	33%
	BLACK(NON-HISP)	307	17%	163	27%	470	19%	316	23%
	HISPANIC	692	38%	230	38%	922	38%	575	42%
	ASIAN/PACIFIC	5	0%	3	0%	8	0%	6	0%
	NATIVE AMERICAN	0	0%	1	0%	1	0%	1	0%
	MULTIPLE RACE	4	0%	10	2%	14	1%	12	1%
AGE (YEARS)	0-12 (PEDIATRIC)	29	2%	1	0%	30	1%	16	1%
	13-19	14	1%	5	1%	19	1%	13	1%
	20-29	294	16%	59	10%	353	15%	195	14%
	30-39	874	48%	199	33%	1,073	44%	583	43%
	40-49	468	26%	235	39%	703	29%	424	31%
	OVER 49	139	8%	103	17%	242	10%	136	10%
MODE OF TRANS	MEN SEX W/MEN (MSM)	521	29%	106	18%	627	26%	263	19%
	INJECTING DRUG(IDU)	749	41%	166	28%	915	38%	527	39%
	MSM & IDU	72	4%	12	2%	84	3%	40	3%
	COAGULATION DIS	29	2%	5	1%	34	1%	13	1%
	HETEROSEXUAL CONTACT	299	16%	116	19%	415	17%	252	18%
	TRANSFUSION	20	1%	2	0%	22	1%	9	1%
	UNDETERMINED/OTHER	97	5%	191	32%	288	12%	242	18%
	ALL PEDIATRIC***	31	2%	4	1%	35	1%	21	2%
AIDS DEFINING ILLNESSES* PRESENTING AT AIDS DIAGNOSIS	Immunological	1,020	56%	509	85%	1,529	63%	1,055	77%
	Pneumocystis Carinii Pneumonia	384	21%	49	8%	433	18%	146	11%
	Wasting Syndrome	251	14%	13	2%	264	11%	74	5%
	Candidiasis Esophagus	199	11%	24	4%	223	9%	75	5%
	Chronic Mucocutaneous Herpes Simplex	82	5%	9	1%	91	4%	45	3%
	Kaposi's Sarcoma	45	2%	7	1%	52	2%	17	1%
	HIV Encephalopathy	69	4%	6	1%	75	3%	19	1%
	Pneumonia, Recurrent	46	3%	13	2%	59	2%	34	2%
	Cryptococcosis	59	3%	10	2%	69	3%	21	2%
COUNTY	BERKS	653	36%	191	32%	844	35%	471	34%
	CARBON	24	1%	13	2%	37	2%	22	2%
	LEHIGH	580	32%	199	33%	779	32%	475	35%
	MONROE	157	9%	65	11%	222	9%	112	8%
	NORTHAMPTON	300	17%	103	17%	403	17%	205	15%
	SCHUYLKILL	104	6%	31	5%	135	6%	82	6%

* Only AIDS defining illnesses diagnosed at the same time as AIDS diagnosis are included.
Percentages total more than 100 because one case may have several conditions diagnosed.
The nine most common conditions among all cases are listed.

*** Includes adult cases which are assigned pediatric modes of transmission since infection is believed to have occurred before age 13

[^] The more recent pattern, 2001-2006 is a better reflection of current distribution of cases than the earlier, 1980-2000 or the total to date, 1980-2006.

Note: Percentages may not add to 100% due to rounding.

TABLE 13B
HIV (NON-AIDS) IN PENNSYLVANIA
CHARACTERISTICS OF CASES BY TIME INTERVAL OF DIAGNOSIS

AIDSNET
BERKS, CARBON, LEHIGH, MONROE, NORTHAMPTON, SCHUYLKILL COUNTIES

		BEFORE 2002		2002		2003		2004		2005		2006		TOTAL TO DEC 31, 2006		CURRENTLY LIVING DEC 31, 2006	
		number	percent	number	percent	number	percent	number	percent	number	percent	number	percent	number	percent	number	percent
	TOTAL CASES	494	100	94	100	102	100	75	100	75	100	193	100	1,033	100	989	100
SEX	MALE	288	58	53	56	61	60	42	56	47	63	118	61	609	59	583	59
	FEMALE	206	42	41	44	41	40	33	44	28	37	75	39	424	41	406	41
RRACE/ETHNICITY	WHITE	169	34	41	44	48	47	30	40	28	37	82	42	398	39	377	38
	BLACK	94	19	22	23	21	21	18	24	23	31	41	21	219	21	213	22
	HISPANIC	218	44	30	32	30	29	25	33	22	29	62	32	387	37	370	37
	ASIAN/PACIFIC	3	1	0	0	3	3	1	1	0	0	0	0	7	1	7	1
	NATIVE_AMERICAN	1	0	0	0	0	0	0	0	0	0	0	0	1	0	1	0
	MULTIRACE	9	2	1	1	0	0	1	1	2	3	8	4	21	2	21	2
AGE (YEARS)	< 13	13	3	0	0	2	2	0	0	0	0	5	3	20	2	20	2
	13 - 19	25	5	1	1	0	0	2	3	3	4	3	2	34	3	34	3
	20 - 29	157	32	18	19	17	17	11	15	13	17	38	20	254	25	242	24
	30 - 39	176	36	35	37	38	37	24	32	25	33	38	20	336	33	322	33
	40 - 49	98	20	28	30	31	30	30	40	25	33	61	32	273	26	259	26
	Over 49	25	5	12	13	14	14	8	11	9	12	48	25	116	11	112	11
MODE OF TRANSMISSION	MSM	65	13	13	14	19	19	17	23	20	27	40	21	174	17	172	17
	IDU	173	35	16	17	20	20	15	20	7	9	40	21	271	26	248	25
	MSM_IDU	14	3	1	1	4	4	5	7	1	1	0	0	25	2	24	2
	COAGULATION_DISORDER	2	0	1	1	1	1	0	0	0	0	0	0	4	0	4	0
	HETEROSEXUAL	85	17	12	13	13	13	14	19	17	23	60	31	201	19	196	20
	TRANSFUSION	3	1	2	2	0	0	0	0	0	0	1	1	6	1	6	1
	UNDETERMINED_MODE	139	28	49	52	43	42	24	32	30	40	47	24	332	32	319	32
	PEDIATRIC	13	3	0	0	2	2	0	0	0	0	5	3	20	2	20	2
COUNTY	BERKS	225	46	33	35	27	26	12	16	19	25	59	31	375	36	354	36
	CARBON	5	1	3	3	5	5	1	1	2	3	2	1	18	2	18	2
	LEHIGH	145	29	20	21	35	34	27	36	29	39	57	30	313	30	304	31
	MONROE	21	4	15	16	14	14	10	13	6	8	31	16	97	9	92	9
	NORTHAMPTON	74	15	20	21	19	19	22	29	15	20	38	20	188	18	182	18
	SCHUYLKILL	24	5	3	3	2	2	3	4	4	5	6	3	42	4	39	4

Note: Percentages may not add to 100% due to 'rounding' .
Cummulative are cases diagnosed through December 31, 2006 and reported through June 30, 2007.
^Reflects year of first diagnosis, which may not indicate first actual diagnosis for HIV infection.
* Includes cases diagnosed prior to 2002

TABLE 14A
AIDS IN PENNSYLVANIA
CHARACTERISTICS OF CASES BY TIME INTERVAL OF DIAGNOSIS
1980-2006

NORTHEASTERN REGIONAL HIV PLANNING COALITION

LACKAWANNA, LUZERNE, PIKE, SUSQUEHANNA, WAYNE, WYOMING COUNTIES

		1980-2000		2001-2006 [^]		TOTAL TO DATE 1980-2006		PRESUMED LIVING	
		number	percent	number	percent	number	percent	number	percent
	TOTAL	570	100%	173	100%	743	100%	374	100%
SEX	MALE	491	86%	126	73%	617	83%	296	79%
	FEMALE	79	14%	47	27%	126	17%	78	21%
RACE/ETHNIC	WHITE(NON-HISP)	392	69%	96	55%	488	66%	214	57%
	BLACK(NON-HISP)	104	18%	46	27%	150	20%	90	24%
	HISPANIC	71	12%	28	16%	99	13%	65	17%
	ASIAN/PACIFIC	0	0%	0	0%	0	0%	0	0%
	NATIVE AMERICAN	1	0%	0	0%	1	0%	0	0%
	MULTIPLE RACE	2	0%	3	2%	5	1%	5	1%
AGE (YEARS)	0-12 (PEDIATRIC)	9	2%	2	1%	11	1%	6	2%
	13-19	7	1%	1	1%	8	1%	4	1%
	20-29	88	15%	16	9%	104	14%	54	14%
	30-39	256	45%	53	31%	309	42%	149	40%
	40-49	156	27%	77	45%	233	31%	126	34%
	OVER 49	54	9%	24	14%	78	10%	35	9%
MODE OF TRANS	MEN SEX W/MEN (MSM)	223	39%	36	21%	259	35%	100	27%
	INJECTING DRUG(IDU)	204	36%	46	27%	250	34%	125	33%
	MSM & IDU	46	8%	6	3%	52	7%	24	6%
	COAGULATION DIS	12	2%	0	0%	12	2%	4	1%
	HETEROSEXUAL CONTACT	44	8%	31	18%	75	10%	50	13%
	TRANSFUSION	9	2%	1	1%	10	1%	3	1%
	UNDETERMINED/OTHER	20	4%	51	29%	71	10%	60	16%
	ALL PEDIATRIC***	12	2%	2	1%	14	2%	8	2%
AIDS DEFINING ILLNESSES* PRESENTING AT AIDS DIAGNOSIS	Immunological	284	50%	143	83%	427	57%	286	76%
	Pneumocystis Carinii Pneumonia	127	22%	12	7%	139	19%	33	9%
	Wasting Syndrome	68	12%	5	3%	73	10%	21	6%
	Candidiasis Esophagus	70	12%	6	3%	76	10%	20	5%
	Chronic Mucocutaneous Herpes Simplex	26	5%	4	2%	30	4%	11	3%
	Kaposi's Sarcoma	31	5%	0	0%	31	4%	5	1%
	HIV Encephalopathy	26	5%	3	2%	29	4%	6	2%
	Pneumonia, Recurrent	14	2%	2	1%	16	2%	7	2%
	Cryptococcosis	18	3%	3	2%	21	3%	8	2%
COUNTY	LACKAWANNA	187	33%	52	30%	239	32%	124	33%
	LUZERNE	230	40%	74	43%	304	41%	145	39%
	PIKE	41	7%	17	10%	58	8%	32	9%
	SUSQUEHANNA	14	2%	7	4%	21	3%	11	3%
	WAYNE	80	14%	20	12%	100	13%	53	14%
	WYOMING	18	3%	3	2%	21	3%	9	2%

* Only AIDS defining illnesses diagnosed at the same time as AIDS diagnosis are included.

Percentages total more than 100 because one case may have several conditions diagnosed.

The nine most common conditions among all cases are listed.

*** Includes adult cases which are assigned pediatric modes of transmission since infection is believed to have occurred before age 13

[^] The more recent pattern, 2001-2006 is a better reflection of current distribution of cases than the earlier, 1980-2000 or the total to date, 1980-2006.

Note: Percentages may not add to 100% due to rounding.

TABLE 14B
HIV (NON-AIDS) IN PENNSYLVANIA
CHARACTERISTICS OF CASES BY TIME INTERVAL OF DIAGNOSIS

NORTHEASTERN REGIONAL HIV PLANNING COALITION
LACKAWANNA, LUZERNE, PIKE, SUSQUEHANNA, WAYNE, WYOMING COUNTIES

		BEFORE 2002		2002		2003		2004		2005		2006		TOTAL TO DEC 31, 2006		CURRENTLY LIVING DEC 31, 2006	
		number	percent	number	percent	number	percent	number	percent	number	percent	number	percent	number	percent	number	percent
	TOTAL CASES	127	100	22	100	57	100	23	100	22	100	63	100	314	100	300	100
SEX	MALE	84	66	20	91	39	68	18	78	14	64	44	70	219	70	210	70
	FEMALE	43	34	2	9	18	32	5	22	8	36	19	30	95	30	90	30
RACE/ETHNICITY	WHITE	80	63	14	64	31	54	12	52	13	59	45	71	195	62	187	62
	BLACK	31	24	5	23	17	30	5	22	8	36	12	19	78	25	74	25
	HISPANIC	13	10	3	14	6	11	3	13	1	5	5	8	31	10	30	10
	ASIAN/PACIFIC	0	0	0	0	1	2	3	13	0	0	0	0	4	1	4	1
	NATIVE_AMERICAN	1	1	0	0	0	0	0	0	0	0	0	0	1	0	1	0
	MULTIRACE	2	2	0	0	2	4	0	0	0	0	1	2	5	2	4	1
AGE (YEARS)	< 13	5	4	0	0	1	2	1	4	0	0	1	2	8	3	8	3
	13 - 19	1	1	0	0	4	7	3	13	2	9	2	3	12	4	12	4
	20 - 29	26	20	0	0	7	12	4	17	5	23	11	17	53	17	51	17
	30 - 39	56	44	8	36	18	32	6	26	4	18	20	32	112	36	109	36
	40 - 49	34	27	8	36	19	33	7	30	6	27	21	33	95	30	88	29
	Over 49	5	4	6	27	8	14	2	9	5	23	8	13	34	11	32	11
MODE OF TRANSMISSION	MSM	32	25	10	45	16	28	5	22	5	23	19	30	87	28	83	28
	IDU	38	30	5	23	8	14	6	26	0	0	6	10	63	20	57	19
	MSM_IDU	3	2	0	0	2	4	0	0	0	0	0	0	5	2	5	2
	COAGULATION_DISORDER	1	1	0	0	0	0	0	0	0	0	0	0	1	0	1	0
	HETEROSEXUAL	16	13	1	5	3	5	4	17	3	14	14	22	41	13	40	13
	TRANSFUSION	0	0	0	0	0	0	0	0	0	0	0	0	0	0	0	0
	UNDETERMINED_MODE	32	25	6	27	27	47	7	30	14	64	23	37	109	35	106	35
	PEDIATRIC	5	4	0	0	1	2	1	4	0	0	1	2	8	3	8	3
COUNTY	LACKAWANNA	47	37	5	23	24	42	7	30	6	27	14	22	103	33	97	32
	LUZERNE	50	39	13	59	25	44	12	52	11	50	31	49	142	45	137	46
	PIKE	9	7	0	0	4	7	1	4	2	9	10	16	26	8	23	8
	SUSQUEHANNA	4	3	1	5	1	2	0	0	0	0	4	6	10	3	10	3
	WAYNE	14	11	3	14	2	4	2	9	3	14	4	6	28	9	28	9
	WYOMING	3	2	0	0	1	2	1	4	0	0	0	0	5	2	5	2

Note: Percentages may not add to 100% due to 'rounding'.

Cummulative are cases diagnosed through December 31, 2006 and reported through June 30, 2007.

^Reflects year of first reported HIV diagnosis, which may not indicate first actual diagnosis for HIV infection.

* Includes cases diagnosed prior to 2002

TABLE 15A
AIDS IN PENNSYLVANIA
CHARACTERISTICS OF CASES BY TIME INTERVAL OF DIAGNOSIS
1980-2006

NORTH CENTRAL DISTRICT AIDS COALITION

BRADFORD, CENTRE, CLINTON, COLUMBIA, LYCOMING, MONTOUR, NORTHUMBERLAND
 POTTER, SNYDER, SULLIVAN, TIOGA, UNION COUNTIES

		1980-2000		2001-2006 [^]		TOTAL TO DATE 1980-2006		PRESUMED LIVING	
		number	percent	number	percent	number	percent	number	percent
	TOTAL	577	100%	158	100%	735	100%	419	100%
SEX	MALE	458	79%	109	69%	567	77%	315	75%
	FEMALE	119	21%	49	31%	168	23%	104	25%
RACE/ETHNIC	WHITE(NON-HISP)	288	50%	85	54%	373	51%	192	46%
	BLACK(NON-HISP)	218	38%	56	35%	274	37%	181	43%
	HISPANIC	67	12%	16	10%	83	11%	42	10%
	ASIAN/PACIFIC	3	1%	0	0%	3	0%	3	1%
	NATIVE AMERICAN	0	0%	0	0%	0	0%	0	0%
	MULTIPLE RACE	1	0%	1	1%	2	0%	1	0%
AGE (YEARS)	0-12 (PEDIATRIC)	4	1%	0	0%	4	1%	1	0%
	13-19	2	0%	1	1%	3	0%	2	0%
	20-29	102	18%	10	6%	112	15%	62	15%
	30-39	272	47%	58	37%	330	45%	182	43%
	40-49	146	25%	62	39%	208	28%	138	33%
	OVER 49	51	9%	27	17%	78	11%	34	8%
MODE OF TRANS	MEN SEX W/MEN (MSM)	190	33%	48	30%	238	32%	111	26%
	INJECTING DRUG(IDU)	252	44%	43	27%	295	40%	182	43%
	MSM & IDU	53	9%	6	4%	59	8%	33	8%
	COAGULATION DIS	14	2%	0	0%	14	2%	4	1%
	HETEROSEXUAL CONTACT	45	8%	30	19%	75	10%	47	11%
	TRANSFUSION	7	1%	0	0%	7	1%	2	0%
	UNDETERMINED/OTHER	12	2%	31	20%	43	6%	39	9%
	ALL PEDIATRIC***	4	1%	0	0%	4	1%	1	0%
AIDS DEFINING ILLNESSES [*] PRESENTING AT AIDS DIAGNOSIS	Immunological	355	62%	141	89%	496	67%	346	83%
	Pneumocystis Carinii Pneumonia	123	21%	12	8%	135	18%	49	12%
	Wasting Syndrome	36	6%	1	1%	37	5%	8	2%
	Candidiasis Esophagus	71	12%	5	3%	76	10%	27	6%
	Chronic Mucocutaneous Herpes Simplex	30	5%	3	2%	33	4%	9	2%
	Kaposi's Sarcoma	14	2%	2	1%	16	2%	5	1%
	HIV Encephalopathy	12	2%	1	1%	13	2%	4	1%
	Pneumonia, Recurrent	6	1%	3	2%	9	1%	5	1%
	Cryptococcosis	14	2%	0	0%	14	2%	3	1%
COUNTY	BRADFORD	28	5%	4	3%	32	4%	14	3%
	CENTRE	87	15%	24	15%	111	15%	64	15%
	CLINTON	7	1%	3	2%	10	1%	3	1%
	COLUMBIA	32	6%	6	4%	38	5%	22	5%
	LYCOMING	213	37%	57	36%	270	37%	151	36%
	MONTOUR	13	2%	2	1%	15	2%	7	2%
	NORTHUMBERLAND	77	13%	26	16%	103	14%	59	14%
	POTTER	7	1%	1	1%	8	1%	3	1%
	SNYDER	14	2%	6	4%	20	3%	11	3%
	SULLIVAN	6	1%	0	0%	6	1%	3	1%
	TIOGA	18	3%	4	3%	22	3%	7	2%
	UNION	75	13%	25	16%	100	14%	75	18%

* Only AIDS defining illnesses diagnosed at the same time as AIDS diagnosis are included.

Percentages total more than 100 because one case may have several conditions diagnosed.

The nine most common conditions among all cases are listed.

*** Includes adult cases which are assigned pediatric modes of transmission since infection is believed to have occurred before age 13

[^] The more recent pattern, 2001-2006 is a better reflection of current distribution of cases than the earlier, 1980-2000 or the total to date, 1980-2006.

Note: Percentages may not add to 100% due to rounding.

TABLE 15B
HIV (NONAIDS) IN PENNSYLVANIA
CHARACTERISTICS OF CASES BY TIME INTERVAL OF DIAGNOSIS

NORTH CENTRAL DISTRICT AIDS COALITION
BRADFORD, CENTRE, CLINTON, COLUMBIA, LYCOMING, MONTOUR, NORTHUMBERLAND
POTTER, SNYDER, SULLIVAN, TIOGA, UNION COUNTIES

		BEFORE 2002		2002		2003		2004		2005		2006		TOTAL TO DEC 31, 2006		CURRENTLY LIVING DEC 31, 2006	
		number	percent	number	percent	number	percent	number	percent	number	percent	number	percent	number	percent	number	percent
	TOTAL CASES	115	100	32	100	33	100	34	100	8	100	61	100	283	100	278	100
SEX	MALE	78	68	23	72	24	73	28	82	5	63	37	61	195	69	192	69
	FEMALE	37	32	9	28	9	27	6	18	3	38	24	39	88	31	86	31
RACE/ETHNICITY	WHITE	55	48	16	50	18	55	16	47	7	88	39	64	151	53	147	53
	BLACK	48	42	11	34	13	39	10	29	1	13	13	21	96	34	95	34
	HISPANIC	12	10	5	16	2	6	8	24	0	0	7	11	34	12	34	12
	ASIAN/PACIFIC	0	0	0	0	0	0	0	0	0	0	0	0	0	0	0	0
	NATIVE_AMERICAN	0	0	0	0	0	0	0	0	0	0	0	0	0	0	0	0
	MULTIRACE	0	0	0	0	0	0	0	0	0	0	2	3	2	1	2	1
AGE (YEARS)	< 13	5	4	0	0	0	0	0	0	0	0	0	0	5	2	5	2
	13 - 19	2	2	1	3	3	9	1	3	0	0	1	2	8	3	8	3
	20 - 29	27	23	6	19	7	21	8	24	2	25	9	15	59	21	58	21
	30 - 39	53	46	10	31	12	36	10	29	0	0	26	43	111	39	110	40
	40 - 49	21	18	7	22	9	27	11	32	3	38	14	23	65	23	62	22
	Over 49	7	6	8	25	2	6	4	12	3	38	11	18	35	12	35	13
MODE OF TRANSMISSION	MSM	28	24	11	34	15	45	13	38	3	38	19	31	89	31	88	32
	IDU	38	33	8	25	3	9	5	15	3	38	12	20	69	24	66	24
	MSM_IDU	4	3	2	6	0	0	1	3	0	0	0	0	7	2	7	3
	COAGULATION_DISORDER	1	1	0	0	0	0	0	0	0	0	0	0	1	0	1	0
	HETEROSEXUAL	15	13	4	13	6	18	3	9	1	13	18	30	47	17	47	17
	TRANSFUSION	0	0	0	0	0	0	1	3	0	0	0	0	1	0	1	0
	UNDETERMINED_MODE	24	21	7	22	9	27	11	32	1	13	12	20	64	23	63	23
	PEDIATRIC	5	4	0	0	0	0	0	0	0	0	0	0	5	2	5	2
COUNTY	BRADFORD	6	5	1	3	0	0	3	9	0	0	5	8	15	5	15	5
	CENTRE	23	20	7	22	3	9	4	12	0	0	13	21	50	18	49	18
	CLINTON	0	0	0	0	1	3	1	3	1	13	0	0	3	1	2	1
	COLUMBIA	4	3	3	9	5	15	1	3	1	13	5	8	19	7	18	6
	LYCOMING	40	35	11	34	11	33	10	29	5	63	22	36	99	35	99	36
	MONTOUR	3	3	1	3	0	0	1	3	0	0	1	2	6	2	5	2
	NORTHUMBERLAND	15	13	3	9	2	6	1	3	0	0	5	8	26	9	26	9
	POTTER	0	0	0	0	0	0	0	0	0	0	1	2	1	0	1	0
	SNYDER	1	1	1	3	1	3	1	3	0	0	1	2	5	2	5	2
	SULLIVAN	0	0	0	0	1	3	1	3	0	0	0	0	2	1	2	1
	TIOGA	2	2	2	6	3	9	0	0	1	13	3	5	11	4	10	4
	UNION	21	18	3	9	6	18	11	32	0	0	5	8	46	16	46	17

Note: Percentages may not add to 100% due to 'rounding'.

Cummulative are cases diagnosed through December 31, 2006 and reported through June 30, 2007.

^Reflects year of first reported HIV diagnosis, which may not indicate first actual diagnosis for HIV infection.

* Includes cases diagnosed prior to 2002

TABLE 16A
AIDS IN PENNSYLVANIA
CHARACTERISTICS OF CASES BY TIME INTERVAL OF DIAGNOSIS
1980-2006

SOUTH CENTRAL PENNSYLVANIA AIDS PLANNING COALITION

ADAMS, BEDFORD, BLAIR, CUMBERLAND, DAUPHIN, FRANKLIN, FULTON, HUNTINGDON,
 JUNIATA, LANCASTER, LEBANON, MIFFLIN, PERRY, YORK COUNTIES

		1980-2000		2001-2006 [^]		TOTAL TO DATE 1980-2006		PRESUMED LIVING	
		number	percent	number	percent	number	percent	number	percent
	TOTAL	2,484	100%	734	100%	3,218	100%	1,734	100%
SEX	MALE	1,937	78%	525	72%	2,462	77%	1,275	74%
	FEMALE	547	22%	209	28%	756	23%	459	26%
RACE/ETHNIC	WHITE(NON-HISP)	1,337	54%	342	47%	1,679	52%	850	49%
	BLACK(NON-HISP)	682	27%	257	35%	939	29%	532	31%
	HISPANIC	449	18%	116	16%	565	18%	326	19%
	ASIAN/PACIFIC	4	0%	1	0%	5	0%	2	0%
	NATIVE AMERICAN	4	0%	1	0%	5	0%	2	0%
	MULTIPLE RACE	8	0%	17	2%	25	1%	22	1%
AGE (YEARS)	0-12 (PEDIATRIC)	37	1%	3	0%	40	1%	15	1%
	13-19	28	1%	4	1%	32	1%	18	1%
	20-29	407	16%	78	11%	485	15%	251	14%
	30-39	1,112	45%	258	35%	1,370	43%	736	42%
	40-49	652	26%	256	35%	908	28%	511	29%
	OVER 49	248	10%	135	18%	383	12%	203	12%
MODE OF TRANS	MEN SEX W/MEN (MSM)	945	38%	241	33%	1,186	37%	595	34%
	INJECTING DRUG(IDU)	836	34%	157	21%	993	31%	511	29%
	MSM & IDU	156	6%	28	4%	184	6%	73	4%
	COAGULATION DIS	52	2%	0	0%	52	2%	16	1%
	HETEROSEXUAL CONTACT	348	14%	185	25%	533	17%	362	21%
	TRANSFUSION	34	1%	3	0%	37	1%	7	0%
	UNDETERMINED/OTHER	67	3%	115	16%	182	6%	148	9%
	ALL PEDIATRIC***	46	2%	5	1%	51	2%	22	1%
AIDS DEFINING ILLNESSES* PRESENTING AT AIDS DIAGNOSIS	Immunological	1,377	55%	625	85%	2,002	62%	1,360	78%
	Pneumocystis Carinii Pneumonia	564	23%	75	10%	639	20%	201	12%
	Wasting Syndrome	312	13%	28	4%	340	11%	79	5%
	Candidiasis Esophagus	284	11%	59	8%	343	11%	115	7%
	Chronic Mucocutaneous Herpes Simplex	158	6%	6	1%	164	5%	59	3%
	Kaposi's Sarcoma	74	3%	10	1%	84	3%	20	1%
	HIV Encephalopathy	75	3%	5	1%	80	2%	18	1%
	Pneumonia, Recurrent	52	2%	11	1%	63	2%	33	2%
	Cryptococcosis	76	3%	12	2%	88	3%	30	2%
COUNTY	ADAMS	47	2%	18	2%	65	2%	30	2%
	BEDFORD	14	1%	6	1%	20	1%	11	1%
	BLAIR	61	2%	28	4%	89	3%	45	3%
	CUMBERLAND	247	10%	87	12%	334	10%	210	12%
	DAUPHIN	721	29%	167	23%	888	28%	451	26%
	FRANKLIN	88	4%	24	3%	112	3%	62	4%
	FULTON	2	0%	1	0%	3	0%	3	0%
	HUNTINGDON	61	2%	22	3%	83	3%	57	3%
	JUNIATA	7	0%	2	0%	9	0%	5	0%
	LANCASTER	612	25%	156	21%	768	24%	396	23%
	LEBANON	108	4%	28	4%	136	4%	72	4%
	MIFFLIN	17	1%	2	0%	19	1%	7	0%
	PERRY	22	1%	7	1%	29	1%	16	1%
	YORK	477	19%	186	25%	663	21%	369	21%

* Only AIDS defining illnesses diagnosed at the same time as AIDS diagnosis are included.

Percentages total more than 100 because one case may have several conditions diagnosed.

The nine most common conditions among all cases are listed.

*** Includes adult cases which are assigned pediatric modes of transmission since infection is believed to have occurred before age 13

[^] The more recent pattern, 2001-2006 is a better reflection of current distribution of cases than the earlier, 1980-2000 or the total to date, 1980-2006.

Note: Percentages may not add to 100% due to rounding .

TABLE 16B
HIV (NON-AIDS) IN PENNSYLVANIA
CHARACTERISTICS OF CASES BY TIME INTERVAL OF DIAGNOSIS

SOUTH CENTRAL PENNSYLVANIA AIDS PLANNING COALITION
ADAMS, BEDFORD, BLAIR, CUMBERLAND, DAUPHIN, FRANKLIN, FULTON, HUNTINGDON,
JUNIATA, LANCASTER, LEBANON, MIFFLIN, PERRY, YORK COUNTIES

		BEFORE 2002		2002		2003		2004		2005		2006		TOTAL TO DEC 31, 2006		CURRENTLY LIVING DEC 31, 2006	
		number	percent	number	percent	number	percent	number	percent	number	percent	number	percent	number	percent	number	percent
	TOTAL CASES	762	100	130	100	110	100	109	100	93	100	154	100	1,358	100	1,312	100
SEX	MALE	514	67	87	67	70	64	70	64	70	75	110	71	921	68	887	68
	FEMALE	248	33	43	33	40	36	39	36	23	25	44	29	437	32	425	32
RRACE/ETHNICITY	WHITE	396	52	58	45	49	45	53	49	46	49	74	48	676	50	653	50
	BLACK	220	29	44	34	37	34	33	30	26	28	42	27	402	30	387	29
	HISPANIC	129	17	27	21	23	21	22	20	18	19	35	23	254	19	247	19
	ASIAN/PACIFIC	2	0	0	0	0	0	1	1	1	1	0	0	4	0	4	0
	NATIVE_AMERICAN	0	0	0	0	0	0	0	0	0	0	0	0	0	0	0	0
	MULTIRACE	15	2	1	1	1	1	0	0	2	2	3	2	22	2	21	2
AGE (YEARS)	< 13	17	2	0	0	3	3	0	0	1	1	6	4	27	2	26	2
	13 - 19	30	4	4	3	2	2	3	3	4	4	3	2	46	3	46	4
	20 - 29	200	26	22	17	23	21	29	27	22	24	34	22	330	24	329	25
	30 - 39	315	41	49	38	33	30	38	35	34	37	45	29	514	38	500	38
	40 - 49	149	20	36	28	34	31	26	24	21	23	42	27	308	23	292	22
	Over 49	51	7	19	15	15	14	13	12	11	12	24	16	133	10	119	9
MODE OF TRANSMISSION	MSM	209	27	32	25	31	28	35	32	43	46	52	34	402	30	392	30
	IDU	220	29	31	24	21	19	14	13	16	17	44	29	346	25	326	25
	MSM_IDU	22	3	2	2	1	1	3	3	2	2	6	4	36	3	36	3
	COAGULATION_DISORDER	5	1	0	0	0	0	0	0	0	0	0	0	5	0	5	0
	HETEROSEXUAL	183	24	29	22	29	26	28	26	20	22	29	19	318	23	311	24
	TRANSFUSION	3	0	1	1	0	0	0	0	0	0	0	0	4	0	3	0
	UNDETERMINED_MODE	103	14	35	27	25	23	29	27	11	12	17	11	220	16	213	16
	PEDIATRIC	17	2	0	0	3	3	0	0	1	1	6	4	27	2	26	2
COUNTY	ADAMS	10	1	5	4	0	0	0	0	1	1	1	1	17	1	16	1
	BEDFORD	1	0	1	1	1	1	4	4	3	3	0	0	10	1	9	1
	BLAIR	22	3	5	4	1	1	1	1	5	5	1	1	35	3	30	2
	CUMBERLAND	111	15	18	14	14	13	8	7	7	8	17	11	175	13	173	13
	DAUPHIN	243	32	28	22	27	25	25	23	27	29	41	27	391	29	377	29
	FRANKLIN	30	4	5	4	4	4	1	1	4	4	5	3	49	4	47	4
	FULTON	1	0	0	0	0	0	0	0	0	0	0	0	1	0	1	0
	HUNTINGDON	15	2	2	2	2	2	3	3	1	1	4	3	27	2	26	2
	JUNIATA	3	0	0	0	1	1	0	0	2	2	0	0	6	0	6	0
	LANCASTER	167	22	29	22	34	31	34	31	15	16	40	26	319	23	310	24
	LEBANON	29	4	1	1	1	1	4	4	3	3	7	5	45	3	44	3
	MIFFLIN	4	1	1	1	0	0	1	1	0	0	1	1	7	1	6	0
	PERRY	5	1	1	1	3	3	2	2	1	1	3	2	15	1	15	1
	YORK	121	16	34	26	22	20	26	24	24	26	34	22	261	19	252	19

Note: Percentages may not add to 100% due to 'rounding'.

Cummulative are cases diagnosed through December 31, 2006 and reported through June 30, 2007.

^Reflects year of first reported HIV diagnosis, which may not indicate first actual diagnosis for HIV infection.

* Includes cases diagnosed prior to 2002

TABLE 17A
AIDS IN PENNSYLVANIA
CHARACTERISTICS OF CASES BY TIME INTERVAL OF DIAGNOSIS
1980-2006

SOUTHWEST PENNSYLVANIA AIDS PLANNING COALITION

ALLEGHENY, ARMSTRONG, BEAVER, BUTLER, CAMBRIA, FAYETTE, GREENE
INDIANA, SOMERSET, WASHINGTON, WESTMORELAND COUNTIES

		1980-2000		2001-2006 [^]		TOTAL TO DATE 1980-2006		PRESUMED LIVING	
		number	percent	number	percent	number	percent	number	percent
	TOTAL	2,686	100%	759	100%	3,445	100%	1,544	100%
SEX	MALE	2,358	88%	602	79%	2,960	86%	1,261	82%
	FEMALE	328	12%	157	21%	485	14%	283	18%
RACE/ETHNIC	WHITE(NON-HISP)	1,709	64%	373	49%	2,082	60%	829	54%
	BLACK(NON-HISP)	888	33%	351	46%	1,239	36%	627	41%
	HISPANIC	64	2%	15	2%	79	2%	54	3%
	ASIAN/PACIFIC	9	0%	1	0%	10	0%	6	0%
	NATIVE AMERICAN	1	0%	0	0%	1	0%	0	0%
	MULTIPLE RACE	15	1%	19	3%	34	1%	28	2%
AGE (YEARS)	0-12 (PEDIATRIC)	18	1%	2	0%	20	1%	10	1%
	13-19	12	0%	3	0%	15	0%	9	1%
	20-29	457	17%	74	10%	531	15%	238	15%
	30-39	1,193	44%	253	33%	1,446	42%	643	42%
	40-49	713	27%	293	39%	1,006	29%	480	31%
	OVER 49	293	11%	134	18%	427	12%	164	11%
MODE OF TRANS	MEN SEX W/MEN (MSM)	1,651	61%	366	48%	2,017	59%	814	53%
	INJECTING DRUG(IDU)	477	18%	106	14%	583	17%	256	17%
	MSM & IDU	169	6%	23	3%	192	6%	73	5%
	COAGULATION DIS	55	2%	3	0%	58	2%	14	1%
	HETEROSEXUAL CONTACT	183	7%	183	24%	366	11%	268	17%
	TRANSFUSION	51	2%	5	1%	56	2%	12	1%
	UNDETERMINED/OTHER	80	3%	71	9%	151	4%	95	6%
	ALL PEDIATRIC***	20	1%	2	0%	22	1%	12	1%
AIDS DEFINING ILLNESSES* PRESENTING AT AIDS DIAGNOSIS	Immunological	1,265	47%	647	85%	1,912	56%	1,197	78%
	Pneumocystis Carinii Pneumonia	882	33%	78	10%	960	28%	246	16%
	Wasting Syndrome	312	12%	31	4%	343	10%	93	6%
	Candidiasis Esophagus	364	14%	69	9%	433	13%	142	9%
	Chronic Mucocutaneous Herpes Simplex	108	4%	7	1%	115	3%	37	2%
	Kaposi's Sarcoma	146	5%	9	1%	155	4%	27	2%
	HIV Encephalopathy	136	5%	5	1%	141	4%	12	1%
	Pneumonia, Recurrent	31	1%	10	1%	41	1%	21	1%
	Cryptococcosis	93	3%	10	1%	103	3%	23	1%
COUNTY	ALLEGHENY	1,962	73%	553	73%	2,515	73%	1,103	71%
	ARMSTRONG	31	1%	10	1%	41	1%	19	1%
	BEAVER	97	4%	35	5%	132	4%	64	4%
	BUTLER	46	2%	15	2%	61	2%	26	2%
	CAMBRIA	104	4%	24	3%	128	4%	70	5%
	FAYETTE	53	2%	20	3%	73	2%	36	2%
	GREENE	23	1%	8	1%	31	1%	17	1%
	INDIANA	27	1%	8	1%	35	1%	17	1%
	SOMERSET	62	2%	18	2%	80	2%	50	3%
	WASHINGTON	100	4%	27	4%	127	4%	57	4%
	WESTMORELAND	181	7%	41	5%	222	6%	85	6%

Percentages total more than 100 because one case may have several conditions diagnosed.

The nine most common conditions among all cases are listed.

*** Includes adult cases which are assigned pediatric modes of transmission since infection is believed to have occurred before age 13

[^] The more recent pattern, 2001-2006 is a better reflection of current distribution of cases than the earlier, 1980-2000 or the total to date, 1980-2006.

Note: Percentages may not add to 100% due to rounding.

TABLE 17B
HIV (NON-AIDS) IN PENNSYLVANIA
CHARACTERISTICS OF CASES BY TIME INTERVAL OF DIAGNOSIS

SOUTHWEST PENNSYLVANIA AIDS PLANNING COALITION
ALLEGHENY, ARMSTRONG, BEAVER, BUTLER, CAMBRIA, FAYETTE, GREENE
INDIANA, SOMERSET, WASHINGTON, WESTMORELAND COUNTIES

		BEFORE 2002		2002		2003		2004		2005		2006		TOTAL TO DEC 31, 2006		CURRENTLY LIVING DEC 31, 2006	
		number	percent	number	percent	number	percent	number	percent	number	percent	number	percent	number	percent	number	percent
	TOTAL CASES	679	100	102	100	96	100	117	100	96	100	186	100	1,276	100	1,229	100
SEX	MALE	530	78	76	75	75	78	94	80	72	75	143	77	990	78	954	78
	FEMALE	149	22	26	25	21	22	23	20	24	25	43	23	286	22	275	22
RACE/ETHNICITY	WHITE	395	58	43	42	46	48	67	57	45	47	102	55	698	55	674	55
	BLACK	239	35	52	51	45	47	45	38	45	47	68	37	494	39	474	39
	HISPANIC	25	4	4	4	3	3	4	3	3	3	2	1	41	3	39	3
	ASIAN/PACIFIC	8	1	0	0	0	0	0	0	1	1	2	1	11	1	11	1
	NATIVE_AMERICAN	1	0	0	0	0	0	0	0	0	0	0	0	1	0	1	0
	MULTIRACE	11	2	3	3	2	2	1	1	2	2	12	6	31	2	30	2
AGE (YEARS)	< 13	6	1	2	2	0	0	1	1	1	1	0	0	10	1	10	1
	13 - 19	21	3	0	0	1	1	7	6	4	4	16	9	49	4	49	4
	20 - 29	201	30	27	26	22	23	27	23	20	21	32	17	329	26	324	26
	30 - 39	274	40	37	36	25	26	34	29	34	35	51	27	455	36	442	36
	40 - 49	139	20	21	21	38	40	39	33	18	19	62	33	317	25	297	24
	Over 49	38	6	15	15	10	10	9	8	19	20	25	13	116	9	107	9
MODE OF TRANSMISSION	MSM	383	56	55	54	42	44	58	50	45	47	85	46	668	52	652	53
	IDU	89	13	9	9	15	16	13	11	7	7	14	8	147	12	131	11
	MSM_IDU	25	4	1	1	1	1	0	0	1	1	3	2	31	2	29	2
	COAGULATION_DISORDER	4	1	0	0	0	0	0	0	0	0	0	0	4	0	4	0
	HETEROSEXUAL	143	21	23	23	26	27	31	26	21	22	51	27	295	23	285	23
	TRANSFUSION	2	0	0	0	0	0	0	0	0	0	1	1	3	0	3	0
	UNDETERMINED_MODE	27	4	12	12	12	13	14	12	21	22	32	17	118	9	115	9
	PEDIATRIC	6	1	2	2	0	0	1	1	1	1	0	0	10	1	10	1
COUNTY	ALLEGHENY	532	78	79	77	72	75	84	72	74	77	132	71	973	76	935	76
	ARMSTRONG	4	1	2	2	0	0	0	0	0	0	1	1	7	1	6	0
	BEAVER	18	3	3	3	3	3	4	3	4	4	0	0	32	3	30	2
	BUTLER	19	3	2	2	0	0	2	2	2	2	1	1	26	2	26	2
	CAMBRIA	23	3	1	1	5	5	6	5	6	6	14	8	55	4	54	4
	FAYETTE	7	1	1	1	6	6	3	3	0	0	6	3	23	2	22	2
	GREENE	7	1	2	2	0	0	2	2	1	1	1	1	13	1	12	1
	INDIANA	5	1	2	2	3	3	3	3	1	1	4	2	18	1	18	1
	SOMERSET	18	3	3	3	3	3	3	3	0	0	4	2	31	2	29	2
	WASHINGTON	23	3	2	2	1	1	5	4	3	3	16	9	50	4	49	4
	WESTMORELAND	23	3	5	5	3	3	5	4	5	5	7	4	48	4	48	4

Note: Percentages may not add to 100% due to 'rounding' .
 Cumulative are cases diagnosed through December 31, 2006 and reported through June 30, 2007.
 ^Reflects year of first reported HIV diagnosis, which may not indicate first actual diagnosis for HIV infection.
 * Includes cases diagnosed prior to 2002

TABLE 18A
AIDS IN PENNSYLVANIA
CHARACTERISTICS OF CASES BY TIME INTERVAL OF DIAGNOSIS
1980-2006

NORTHWEST PENNSYLVANIA RURAL AIDS ALLIANCE

CAMERON, CLARION, CLEARFIELD, CRAWFORD, ELK, ERIE, FOREST, JEFFERSON,
LAWRENCE, MCKEAN, MERCER, VENANGO, WARREN COUNTIES

		1980-2000		2001-2006 [^]		TOTAL TO DATE 1980-2006		PRESUMED LIVING	
		number	percent	number	percent	number	percent	number	percent
	TOTAL	514	100%	158	100%	672	100%	341	100%
SEX	MALE	431	84%	125	79%	556	83%	268	79%
	FEMALE	83	16%	33	21%	116	17%	73	21%
RACE/ETHNIC	WHITE(NON-HISP)	363	71%	82	52%	445	66%	186	55%
	BLACK(NON-HISP)	108	21%	50	32%	158	24%	105	31%
	HISPANIC	38	7%	23	15%	61	9%	46	13%
	ASIAN/PACIFIC	4	1%	0	0%	4	1%	1	0%
	NATIVE AMERICAN	0	0%	0	0%	0	0%	0	0%
	MULTIPLE RACE	1	0%	3	2%	4	1%	3	1%
AGE (YEARS)	0-12 (PEDIATRIC)	5	1%	3	2%	8	1%	6	2%
	13-19	7	1%	0	0%	7	1%	5	1%
	20-29	93	18%	26	16%	119	18%	70	21%
	30-39	217	42%	49	31%	266	40%	132	39%
	40-49	125	24%	57	36%	182	27%	88	26%
	OVER 49	67	13%	23	15%	90	13%	40	12%
MODE OF TRANS	MEN SEX W/MEN (MSM)	242	47%	52	33%	294	44%	120	35%
	INJECTING DRUG(IDU)	126	25%	42	27%	168	25%	91	27%
	MSM & IDU	35	7%	8	5%	43	6%	31	9%
	COAGULATION DIS	14	3%	0	0%	14	2%	1	0%
	HETEROSEXUAL CONTACT	59	11%	28	18%	87	13%	59	17%
	TRANSFUSION	14	3%	0	0%	14	2%	0	0%
	UNDETERMINED/OTHER	15	3%	25	16%	40	6%	29	9%
	ALL PEDIATRIC***	9	2%	3	2%	12	2%	10	3%
AIDS DEFINING ILLNESSES* PRESENTING AT AIDS DIAGNOSIS	Immunological	310	60%	129	82%	439	65%	262	77%
	Pneumocystis Carinii Pneumonia	122	24%	19	12%	141	21%	44	13%
	Wasting Syndrome	65	13%	11	7%	76	11%	20	6%
	Candidiasis Esophagus	57	11%	5	3%	62	9%	20	6%
	Chronic Mucocutaneous Herpes Simplex	21	4%	4	3%	25	4%	10	3%
	Kaposi's Sarcoma	13	3%	2	1%	15	2%	6	2%
	HIV Encephalopathy	20	4%	2	1%	22	3%	6	2%
	Pneumonia, Recurrent	15	3%	0	0%	15	2%	5	1%
	Cryptococcosis	19	4%	5	3%	24	4%	13	4%
COUNTY	CAMERON	0	0%	0	0%	0	0%	0	0%
	CLARION	7	1%	3	2%	10	1%	6	2%
	CLEARFIELD	45	9%	18	11%	63	9%	42	12%
	CRAWFORD	43	8%	11	7%	54	8%	23	7%
	ELK	6	1%	1	1%	7	1%	3	1%
	ERIE	230	45%	66	42%	296	44%	151	44%
	FOREST	1	0%	3	2%	4	1%	3	1%
	JEFFERSON	12	2%	3	2%	15	2%	6	2%
	LAWRENCE	46	9%	12	8%	58	9%	26	8%
	MCKEAN	27	5%	7	4%	34	5%	17	5%
	MERCER	57	11%	21	13%	78	12%	41	12%
	VENANGO	28	5%	4	3%	32	5%	10	3%
	WARREN	12	2%	9	6%	21	3%	13	4%

* Only AIDS defining illnesses diagnosed at the same time as AIDS diagnosis are included.

Percentages total more than 100 because one case may have several conditions diagnosed.

The nine most common conditions among all cases are listed.

*** Includes adult cases which are assigned pediatric modes of transmission since infection is believed to have occurred before age 13

[^] The more recent pattern, 2001-2006 is a better reflection of current distribution of cases than the earlier, 1980-2000 or the total to date, 1980-2006.

Note: Percentages may not add to 100% due to rounding .

TABLE 18B
HIV (NON-AIDS) IN PENNSYLVANIA
CHARACTERISTICS OF CASES BY TIME INTERVAL OF DIAGNOSIS

NORTHWEST PENNSYLVANIA RURAL AIDS ALLIANCE
CAMERON, CLARION, CLEARFIELD, CRAWFORD, ELK, ERIE, FOREST, JEFFERSON,
LAWRENCE, MCKEAN, MERCER, VENANGO, WARREN COUNTIES

		BEFORE 2002		2002		2003		2004		2005		2006		TOTAL TO DEC 31, 2006		CURRENTLY LIVING DEC 31, 2006	
		number	percent	number	percent	number	percent	number	percent	number	percent	number	percent	number	percent	number	percent
	TOTAL CASES	138	100	16	100	29	100	17	100	18	100	44	100	262	100	256	100
SEX	MALE	107	78	11	69	21	72	12	71	10	56	32	73	193	74	188	73
	FEMALE	31	22	5	31	8	28	5	29	8	44	12	27	69	26	68	27
RACE/ETHNICITY	WHITE	66	48	12	75	18	62	8	47	12	67	26	59	142	54	139	54
	BLACK	51	37	3	19	8	28	5	29	4	22	14	32	85	32	82	32
	HISPANIC	18	13	1	6	2	7	4	24	1	6	2	5	28	11	28	11
	ASIAN/PACIFIC	2	1	0	0	0	0	0	0	0	0	0	0	2	1	2	1
	NATIVE_AMERICAN	1	1	0	0	0	0	0	0	0	0	0	0	1	0	1	0
	MULTIRACE	0	0	0	0	1	3	0	0	1	6	2	5	4	2	4	2
AGE (YEARS)	< 13	1	1	0	0	0	0	1	6	0	0	0	0	2	1	2	1
	13 - 19	8	6	0	0	0	0	0	0	2	11	1	2	11	4	11	4
	20 - 29	36	26	1	6	6	21	3	18	5	28	3	7	54	21	53	21
	30 - 39	67	49	7	44	8	28	3	18	4	22	12	27	101	39	97	38
	40 - 49	21	15	6	38	10	34	7	41	3	17	22	50	69	26	69	27
	Over 49	5	4	2	13	5	17	3	18	4	22	6	14	25	10	24	9
MODE OF TRANSMISSION	MSM	46	33	6	38	11	38	4	24	5	28	17	39	89	34	86	34
	IDU	39	28	3	19	5	17	3	18	0	0	1	2	51	19	50	20
	MSM_IDU	8	6	1	6	2	7	1	6	0	0	0	0	12	5	12	5
	COAGULATION_DISORDER	1	1	0	0	0	0	0	0	0	0	0	0	1	0	1	0
	HETEROSEXUAL	28	20	3	19	4	14	4	24	3	17	4	9	46	18	45	18
	TRANSFUSION	1	1	0	0	0	0	0	0	0	0	0	0	1	0	1	0
	UNDETERMINED_MODE	14	10	3	19	7	24	4	24	10	56	22	50	60	23	59	23
	PEDIATRIC	1	1	0	0	0	0	1	6	0	0	0	0	2	1	2	1
COUNTY	CAMERON	0	0	0	0	0	0	0	0	0	0	0	0	0	0	0	0
	CLARION	2	1	0	0	0	0	0	0	0	0	0	0	2	1	2	1
	CLEARFIELD	11	8	2	13	3	10	0	0	3	17	6	14	25	10	24	9
	CRAWFORD	8	6	5	31	8	28	1	6	1	6	9	20	32	12	30	12
	ELK	1	1	0	0	0	0	0	0	0	0	1	2	2	1	2	1
	ERIE	78	57	7	44	7	24	11	65	9	50	12	27	124	47	122	48
	FOREST	2	1	0	0	0	0	1	6	0	0	5	11	8	3	8	3
	JEFFERSON	6	4	1	6	1	3	0	0	0	0	0	0	8	3	8	3
	LAWRENCE	5	4	0	0	2	7	0	0	1	6	2	5	10	4	10	4
	MCKEAN	1	1	0	0	3	10	0	0	1	6	2	5	7	3	7	3
	MERCER	14	10	1	6	3	10	3	18	1	6	4	9	26	10	26	10
	VENANGO	6	4	0	0	0	0	0	0	0	0	2	5	8	3	8	3
	WARREN	4	3	0	0	2	7	1	6	2	11	1	2	10	4	9	4

Note: Percentages may not add to 100% due to 'rounding'.

Cummulative are cases diagnosed through December 31, 2006 and reported through June 30, 2007.

^Reflects year of first reported HIV diagnosis, which may not indicate first actual diagnosis for HIV infection.

* Includes cases diagnosed prior to 2002

TABLE 19
 DIVISION OF HIV/AIDS' PUBLICLY FUNDED HIV COUNSELING AND TESTING SITES
 Number of visits* by client's county of residence
 2002-2006

COUNTY	2002	2003	2004	2005	2006	TOTAL
Adams	345	421	423	410	359	1,958
Allegheny	11,336	11,613	12,222	10,076	10,564	55,811
Armstrong	73	48	47	66	57	291
Beaver	730	1,013	942	801	777	4,263
Bedford	99	44	40	52	66	301
Berks	5,046	6,578	7,086	6,039	4,936	29,685
Blair	408	447	477	450	417	2,199
Bradford	86	109	161	93	145	594
Bucks	1,426	1,660	1,854	1,861	1,870	8,671
Butler	502	423	639	670	735	2,969
Cambria	390	423	494	548	477	2,332
Cameron	3	0	7	19	11	40
Carbon	212	165	147	98	96	718
Centre	1,034	1,573	1,535	1,363	1,327	6,832
Chester	753	965	1,726	1,704	1,707	6,855
Clarion	120	196	255	272	223	1,066
Clearfield	195	181	197	279	252	1,104
Clinton	177	140	243	397	345	1,302
Columbia	347	423	664	619	499	2,552
Crawford	125	113	93	119	128	578
Cumberland	520	787	896	816	506	3,525
Dauphin	1,899	2,191	2,459	2,827	3,060	12,436
Delaware	2,457	3,272	3,164	2,710	2,176	13,779
Elk	65	68	74	77	120	404
Erie	1,707	2,259	2,626	2,446	2,129	11,167
Fayette	399	489	515	671	660	2,734
Forest	9	1	11	9	2	32
Franklin	418	482	599	588	531	2,618
Fulton	51	31	30	55	29	196
Greene	30	65	66	37	54	252
Huntingdon	150	137	276	248	216	1,027
Indiana	429	503	564	557	554	2,607
Jefferson	90	125	102	114	132	563
Juniata	31	35	30	18	23	137
Lackawanna	438	405	636	555	792	2,826
Lancaster	2,020	2,320	2,610	2,253	2,274	11,477
Lawrence	76	92	65	174	109	516
Lebanon	415	413	519	436	253	2,036
Lehigh	2,597	3,534	4,136	4,157	4,458	18,882
Luzerne	653	617	676	653	687	3,286
Lycoming	1,357	1,383	1,371	1,236	1,051	6,398
McKean	93	125	167	197	110	692
Mercer	300	262	293	287	352	1,494
Mifflin	180	138	206	188	179	891
Monroe	469	282	476	663	750	2,640
Montgomery	1,846	2,041	2,309	2,212	2,037	10,445
Montour	181	147	105	168	100	701
Northampton	2,099	2,117	2,383	2,666	3,326	12,591
Northumberland	752	733	659	295	300	2,739
Perry	60	44	56	43	68	271
Philadelphia	36,539	39,294	40,481	36,571	2995**	152,885
Pike	156	138	109	189	200	792
Potter	11	11	22	23	13	80
Schuylkill	967	939	839	659	488	3,892
Snyder	132	85	108	107	104	536
Somerset	136	158	168	179	145	786
Sullivan	4	2	3	19	5	33
Susquehanna	37	38	29	34	29	167
Tioga	161	108	155	153	87	664
Union	239	231	220	221	234	1,145
Venango	209	229	278	333	309	1,358
Warren	111	136	185	178	159	769
Washington	445	484	457	341	297	2,024
Wayne	119	93	103	116	102	533
Westmoreland	743	816	984	862	883	4,288
Wyoming	53	67	61	70	53	304
York	1,520	1,654	1,806	2,235	1,867	9,082
Unknown**	527	415	621	1,159	437	3,159
Out of State	1,798	1,051	1,248	1,522	1,022	6,641
TOTALS	89,105	97,582	105,208	98,263	58,463	448,621
#POSITIVES	1148	1123	1086	1217	385	4,959
PERCENTAGE	1.3%	1.2%	1.0%	1.2%	0.7%	1.1%

* A visit consists of a client meeting face to face with a counselor for counseling only, or counseling and testing.

Records scanned to date of this report, September 7, 2007

** Philadelphia testing data are incomplete for 2006

++ The total for 2006 includes 1,344 PEMS Forms (CDC new data collection system)

NOTE: In 2006 approximately 92% of clients counseled consented to testing. In 2006 approximately 92% of clients counseled consented to testing. Forms for 2006 are still being submitted and will be included in the next report

TABLE 20
PUBLICLY FUNDED HIV COUNSELING & TESTING IN PENNSYLVANIA
NUMBER OF VISITS BY AGE, RACE/ETHNICITY AND SEX
2006*

AGE GROUP	WHITE NON-HISPANIC		BLACK NON-HISPANIC		HISPANIC		ASIAN/PACIFIC ISLANDS		AM INDIAN/ALASKAN NATIVE		OTHER/UNDETERMINED		TOTAL	
	MALE	FEMALE	MALE	FEMALE	MALE	FEMALE	MALE	FEMALE	MALE	FEMALE	MALE	FEMALE	MALE	FEMALE
< 5	8	2	2	1	5	5	1	0	0	0	2	0	18	8
5-12	19	18	9	6	5	7	3	2	0	0	0	0	36	33
13-19	2,363	3,259	1,524	1,328	757	682	33	55	3	6	108	101	4,788	5,431
20-29	9,035	8,100	3,413	2,521	2,083	1,477	153	195	10	18	223	171	14,917	12,482
30-39	3,353	2,376	1,792	1,180	1,261	838	62	72	7	11	88	52	6,563	4,529
40-49	2,668	1,797	1,586	1,018	727	474	35	34	7	5	25	26	5,048	3,354
>= 50	1,343	672	703	332	319	214	17	25	1	2	12	10	2,395	1,255
Unknown	0	0	0	0	0	1	0	0	0	0	0	0	0	1
Not specified	133	165	46	43	19	16	1	4	0	0	22	16	221	244
TOTAL	18,922	16,389	9,075	6,429	5,176	3,714	305	387	28	42	480	376	33,986	27,337

* Data Provided by the Division of HIV/AIDS Prevention, PA Department of Health.

TABLE 21
 PUBLICLY FUNDED HIV COUNSELING & TESTING IN PENNSYLVANIA
 NUMBER OF VISITS BY SELF-ACKNOWLEDGED RISK EXPOSURE GROUP
 2006*

RISK EXPOSURE GROUPS	NUMBER OF VISITS
MSM Injecting Drug User	221
MSM	3,095
Heterosexual Injecting Drug User	5,815
Sex Partner at Risk**	11,476
Child of Woman with HIV/AIDS	4
STD Diagnosis	4,680
Sex for Drugs or Money	424
Sex while Using Non-Injecting Drugs	6,431
Hemophilia/Blood Recipient	109
Victim of Sexual Assault	318
Health Care Exposure	265
No Acknowledged Risk	3,078
Heterosexual/No Other Risk	18,959
Other	648
Not Specified	5,935
Total	61,458

****SEX PARTNER AT RISK**

Female Sex Partner of MSM	285
Sex Partner of Person with HIV/AIDS	540
Sex Partner of Injecting Drug User	1,338
Sex Partner of Person with Other HIV/AIDS Risk	9,313
Total	11,476

* Data Provided by the Division of HIV/AIDS Prevention, PA Department of Health.

LIMITATIONS OF HIV COUNSELING AND TESTING DATA FROM PUBLICLY SUPPORTED SITES

The counseling and testing (C/T) data in this report represent visits for counseling only/or counseling and testing offered at sites that provide C/T as part of the Pennsylvania Department of Health's HIV Prevention Program.

When reviewing these data, please consider the following limitations.

C/T data from publicly funded sites represent only a small portion of the individuals who actually receive C/T. A survey done in 1993 by the Centers for Disease Control and Prevention revealed that, nationwide, publicly funded sites provide C/T to about one third of all individuals who receive C/T. The other two thirds receive C/T in the private sector, e.g., physicians' offices, hospitals, etc.

Individuals voluntarily present for C/T at publicly funded sites and do not represent any specific population. Their demographic information and test results cannot be used to set seroprevalence levels for any specific age, sex, race, ethnic or risk group.

At publicly funded sites, individuals are asked to provide personal information and to complete a self-assessment of behaviors that place them at risk for HIV. Verification of this information is not required.

In Pennsylvania, data for 1995 show that approximately 44% of all individuals who receive C/T at publicly funded sites have previously been counseled and tested. Their personal and risk information may, therefore, be included in these data more than once.

At this time in Pennsylvania, C/T data are used to document the provision of HIV prevention services and, with other information on where at-risk populations reside, may be helpful in determining where additional HIV prevention services are needed.

This information was provided by the Division of HIV/AIDS.

For additional information on C/T data, please contact the Bureau of Communicable Diseases, Division of HIV/AIDS at 717-783-0574.